

Larkrise The Street
Rumburgh
Halesworth
IP19 0NN



Larkrise The Street

Guide Price £425,000

The spacious detached bungalow...

Welcome to Larkrise, a charming three bedroom detached bungalow in the picturesque village of Rumburgh. This inviting home features spacious, versatile accommodation, situated within a generous, mature plot with something for the whole family.

Upon entering, you'll find a good-sized hallway providing access to all main rooms. Opposite the entrance is Bedroom 1, currently being used as an office, but with plenty of room for a King-size bed and further furniture as well as charming views of the rear garden and built-in storage. Parallel, bedroom 2 offers another impressive size with ample room for a double bed and further built-in storage. Here you will also find the cloakroom with a W/C and hand wash basin.

Further down the hall is Bedroom 3, another well-appointed space, sized for a double or king-sized bed, with a window overlooking the front.

The contemporary family bathroom boasts a modern four-piece suite, finished with elegant tiles, and boasts a bathtub, shower, W/C and hand wash basin.

Into the sitting room, enjoy an exceptional living space with triple aspect windows, a beautiful wood burner, and plenty of room for living and dining arrangements.

The well-equipped kitchen features abundant wall and base units, generous countertops, and space for numerous appliances. Of which then leads seamlessly into the conservatory and, subsequently, the enchanting garden. The conservatory boasts a generous addition to the home offering ample space for additional furniture and a great space to relax or entertain.

Set back from the road, Larkrise boasts a long shingle driveway with ample parking, complemented by a lovely front garden filled with vibrant flowers. A single garage with power and lighting offers additional practicality.

The rear garden is a serene oasis, featuring a spacious patio, well-maintained lawns, and an array of fruit trees and mature plants, and simply the perfect spot for outdoor enjoyment.

Agents notes...

A pre-recorded walkaround tour is available for this property

Council Tax Band D

Local Authority
East Suffolk

Council Tax Band D

EPC Rating D



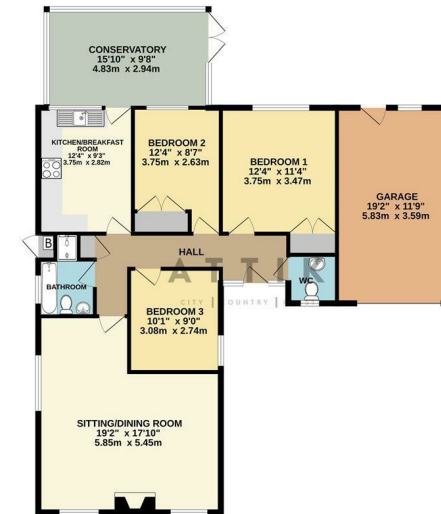
Contact

01986 899532

enquiries@attikccc.co.uk

www.attikccc.co.uk

GROUND FLOOR
1283 sq.ft. (119.2 sq.m.) approx.



TOTAL FLOOR AREA: 1283 sq.ft. (119.2 sq.m.) approx.
Whilst every attempt has been made to ensure the accuracy of the figures contained herein, measurements of floors, ceilings, rooms and any other parts are approximate and are provided only as a guide to the size of the property. The services, systems and appliances shown have not been tested and no guarantee can be given as to their operation or efficiency. Plans are for information only.
Made with homestyler.co.uk