

Holton Road
Halesworth
IP19 8HQ



ATTIK
CITY | COUNTRY | COAST

Holton Road

Guide Price £350,000

THE BUNGALOW...

With three bedrooms, a large lounge/diner, a bathroom and shower room, we're sure this lovely detached bungalow on Holton Road will tick so many boxes for a discerning buyer.

Let's start with the approach - a wide, gravelled driveway makes for impressive kerb appeal with ample off road parking for several cars. A front entrance hall greets the visitor with an expansively large lounge/diner to the right and a beautiful kitchen/breakfast room to the left.

The triple aspect lounge/diner is bathed in natural light from a bay window to the front, two side windows and French doors to the rear. A stone clad feature fireplace catches the eye as much as the dimensions. You could easily dine with eight people and lounge with as many in this room. The kitchen is very contemporary with full height integrated fridge & freezer, dishwasher, hob with extractor and double oven, along with very attractive, high gloss, base and wall units.

An inner hall leads to bedrooms one and two - both doubles - and each has wonderful views of the rear garden. Bedroom two has fitted wardrobes with the family bathroom close by. A third hall, to the side, leads to a surprise - a separate shower room with corner enclosure, along with bedroom three, which could act as a home office or separate reception room.

The rear garden needs to be seen to be appreciated - it is festooned with mature planting, along with a patio and lawn. It is fully enclosed and beautifully private too.

Halesworth itself is a very pleasant Suffolk market town. It has many amenities and shops, centred around the 16th Century Thoroughfare. Beccles and Bungay, for high schools and leisure, are an easy drive away. The coastal delights of towns like Southwold are nearby too, with Halesworth having mainline rail access to Beccles, Lowestoft, Ipswich and London.

AGENTS NOTES...

A pre-recorded walkaround tour is available for this property

Council Tax Band C

Local Authority
East Suffolk Council

Council Tax Band C

EPC Rating D



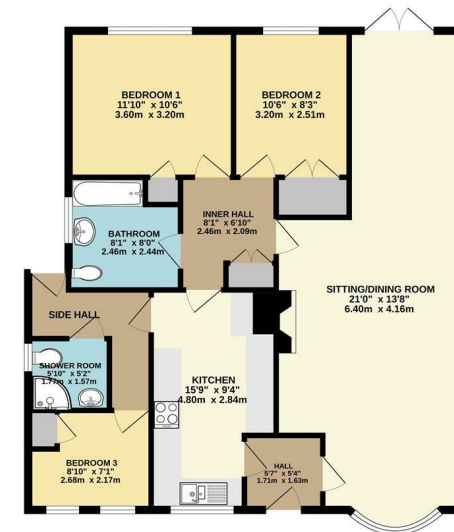
Contact

01986 899532

enquiries@attikccc.co.uk

www.attikccc.co.uk

GROUND FLOOR
1026 sq.ft. (95.3 sq.m.) approx.



TOTAL FLOOR AREA: 1026 sq.ft. (95.3 sq.m.) approx.
While every attempt has been made to ensure the accuracy of the figures contained here, measurements of floors, rooms, areas and site areas are approximate and are provided as a guide to the size of the property. The services, systems and appliances shown have not been tested and no guarantee is given as to their operation or condition.