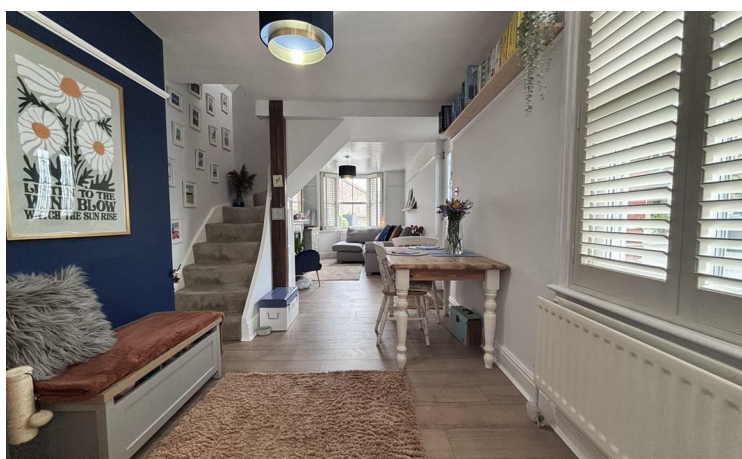


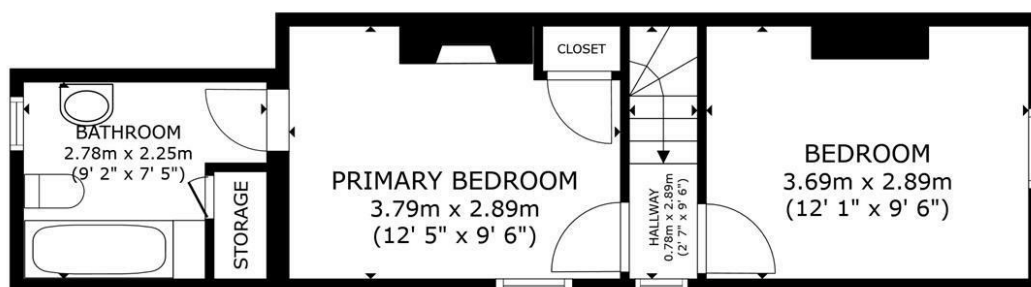
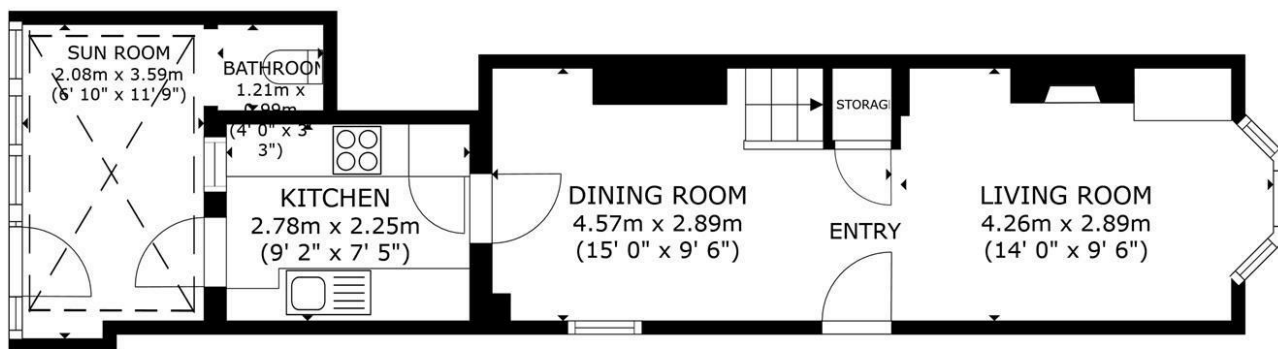


22 VICTORIA STREET HORSHAM

£400,000
FREEHOLD

- BEAUTIFUL TWO BEDROOM VICTORIAN PROPERTY
- TWO SPACIOUS DOUBLE BEDROOMS
- LOUNGE THROUGH DINER PLUS CHARMING SUN ROOM TO THE REAR
- 0.3MI TO HORSHAM STATION AND HORSHAM TOWN CENTRE
- HIGHLY SOUGHT AFTER CENTRAL HORSHAM LOCATION
- STUNNING INTERIORS
- NEW MODERN KITCHEN IN 2022 WITH INTEGRATED APPLIANCES



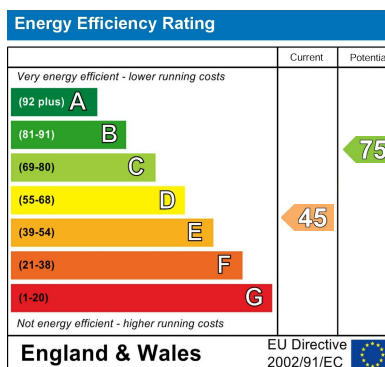
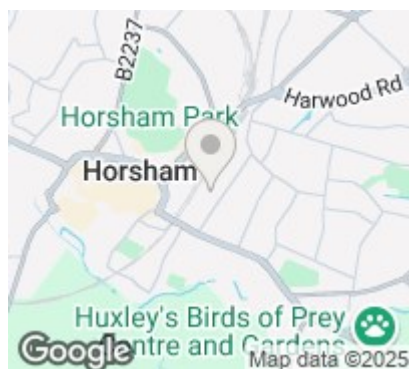


ELTONS

Estate Agents

GROSS INTERNAL AREA
FLOOR 1 41.2 m² (444 sq.ft.) FLOOR 2 31.3 m² (337 sq.ft.)
TOTAL : 72.5 m² (781 sq.ft.)
SIZES AND DIMENSIONS ARE APPROXIMATE, ACTUAL MAY VARY.

Matterport



Agents Note: Whilst every care has been taken to prepare these particulars, they are for guidance purposes only. All measurements are approximate and are for general guidance purposes only and whilst every care has been taken to ensure their accuracy, they should not be relied upon and potential buyers/tenants are advised to recheck the measurements

Eltons Estate Agents Horsham 01403 299 771
13 - 15 Queen Street
Horsham
West Sussex
RH13 5AA

sales@eltons.co.uk
eltons.co.uk

ELTONS
Estate Agents