



28 HIGHWOOD CRESCENT HORSHAM

£525,000
FREEHOLD

Eltons Estate Agents are delighted to present to the market this stunning three bedroom semi detached house located in the sought after Highwood Village, Horsham

- STUNNING THREE BEDROOM SEMI DETACHED HOUSE
- LARGE MODERN KITCHEN DINER WITH STUNNING FRENCH DOORS
- DOWNSTAIRS W/C
- TWO FURTHER GOOD SIZED BEDROOMS
- HIGHLY SOUGHT AFTER LOCATION
- **NO ONWARD CHAIN**
- SEPARATE LOUNGE WITH BAY WINDOWS
- MASTER BEDROOM WITH ENSUITE AND BUILT IN WARDROBES
- MODERN FAMILY BATHROOM
- GARAGE AND DRIVEWAY WITH ACCESS DIRECTLY INTO THE GARDEN



Guide price: £525,000 - £550,000

Eltons Estate Agents are delighted to present to the market this stunning three bedroom semi detached house located in the sought after Highwood Village, Horsham.

Nestled in the desirable Highwood Crescent, Horsham, this stunning and spacious three-bedroom semi-detached house offers a perfect blend of comfort and style. Spanning an impressive 1,205 square feet, this property is ideal for families seeking a welcoming home.

Upon entering, you are greeted by a bright entrance hallway. The lounge features elegant bay windows that fill the space with natural light, creating a warm and inviting atmosphere.

The heart of the home is undoubtedly the expansive kitchen diner, which boasts beautiful floor-to-ceiling windows and French doors that seamlessly connect the indoor space to the landscaped garden. This delightful feature not only enhances the aesthetic appeal but also provides an excellent setting for entertaining guests or enjoying family meals. The kitchen itself is modern and attractive and features ample work top space and integrated appliances.

The downstairs is finished with ample storage cupboards and a convenient downstairs W/C.

Upstairs, the property comprises of a generous master bedroom complete with an ensuite bathroom and built-in wardrobes, ensuring ample storage and privacy. Additionally, there are two further well-proportioned bedrooms, perfect for children, guests, or even a home office, along with a family bathroom that caters to the needs of the household.

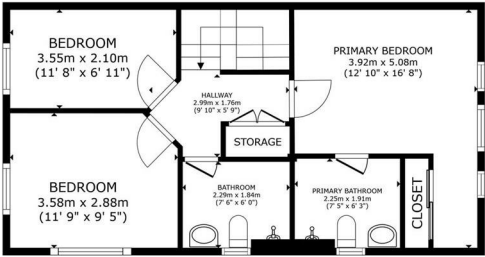
Outside, the landscaped garden offers a tranquil retreat, leading to a driveway that accommodates parking for two vehicles, as well as a garage for added convenience. This home is not just a place to live; it is a sanctuary that combines modern living with practical amenities.

With its prime location and thoughtful design, this property is a rare find in Horsham. It presents an excellent opportunity for those looking to settle in a vibrant community while enjoying the comforts of a beautifully appointed home. Don't miss the chance to make this exceptional property your own.

Highwood Crescent in Horsham, West Sussex, is a sought-after location within the prestigious Highwood Village development by Berkeley Homes. It offers a blend of modern living with excellent access to local amenities, green spaces, and convenient transport links.

Local Amenities

Horsham Town Centre: Just a short distance away, Horsham town centre provides a variety of shops, cafes, restaurants, and leisure facilities. The Swan Walk Shopping Centre and John Lewis & Waitrose are popular choices

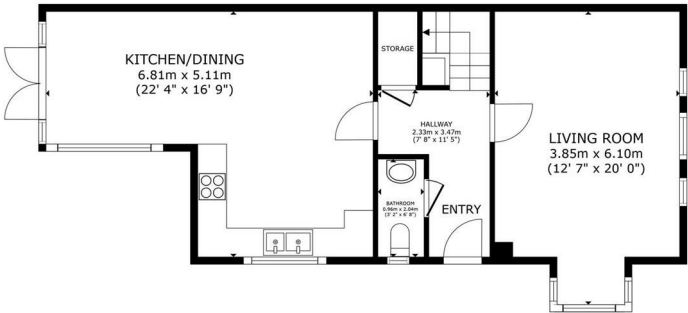


FLOOR 2

ELTONS
Estate Agents

GROSS INTERNAL AREA
FLOOR 1: 61.3 m² (660 sq. ft.) FLOOR 2: 50.6 m² (545 sq. ft.)
TOTAL: 111.9 m² (1,205 sq. ft.)
SIZES AND DIMENSIONS ARE APPROXIMATE, ACTUAL MAY VARY.

Matterport

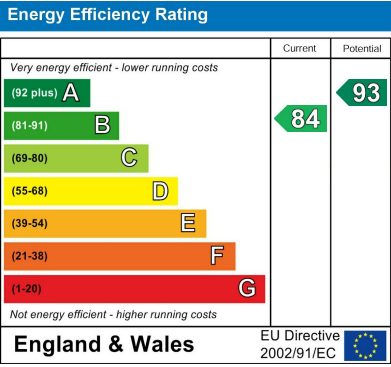


FLOOR 1

ELTONS
Estate Agents

GROSS INTERNAL AREA
FLOOR 1: 61.3 m² (660 sq. ft.) FLOOR 2: 50.6 m² (545 sq. ft.)
TOTAL: 111.9 m² (1,205 sq. ft.)
SIZES AND DIMENSIONS ARE APPROXIMATE, ACTUAL MAY VARY.

Matterport



Agents Note: Whilst every care has been taken to prepare these particulars, they are for guidance purposes only. All measurements are approximate and are for general guidance purposes only and whilst every care has been taken to ensure their accuracy, they should not be relied upon and potential buyers/tenants are advised to recheck the measurements

Eltons Estate Agents Horsham 01403 299 771
13 - 15 Queen Street sales@eltons.co.uk
Horsham eltons.co.uk
West Sussex
RH13 5AA

ELTONS
Estate Agents