

# ELTONS

Estate Agents



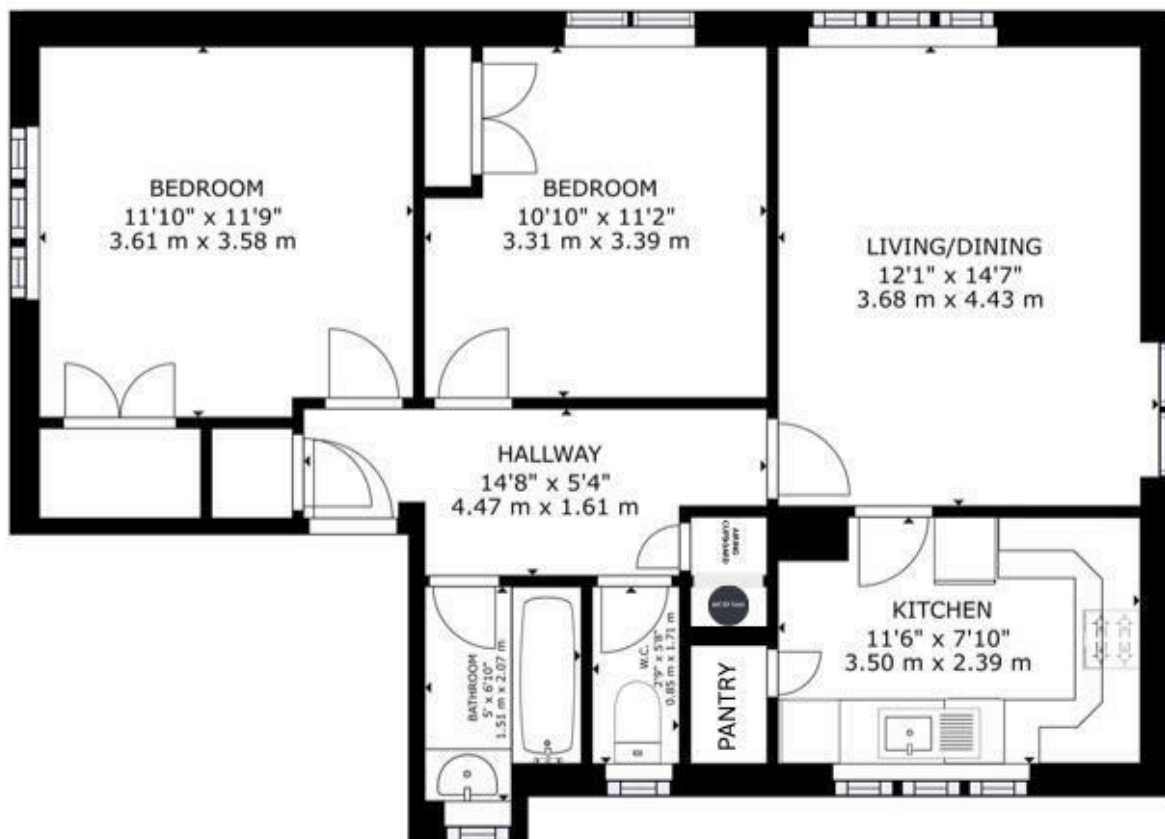
1 SWANN WAY  
HORSHAM

£200,000  
LEASEHOLD

Eltons Estate Agents are delighted to bring to market this two double bedroom ground floor flat located in Broadbridge Heath, Horsham.



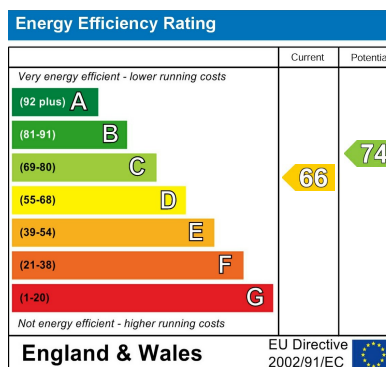




**ELTONS**  
Estate Agents

GROSS INTERNAL AREA  
FLOOR 1: 753 sq ft, 69.99 m<sup>2</sup>  
TOTAL: 753 sq ft, 69.99 m<sup>2</sup>  
SIZES AND DIMENSIONS ARE APPROXIMATE, ACTUAL MAY VARY

**Matterport**



Agents Note: Whilst every care has been taken to prepare these particulars, they are for guidance purposes only. All measurements are approximate and are for general guidance purposes only and whilst every care has been taken to ensure their accuracy, they should not be relied upon and potential buyers/tenants are advised to recheck the measurements

**Eltons Estate Agents Horsham** 01403 299 771  
13 - 15 Queen Street  
Horsham  
West Sussex  
RH13 5AA  
sales@eltons.co.uk  
eltons.co.uk

**ELTONS**  
Estate Agents