



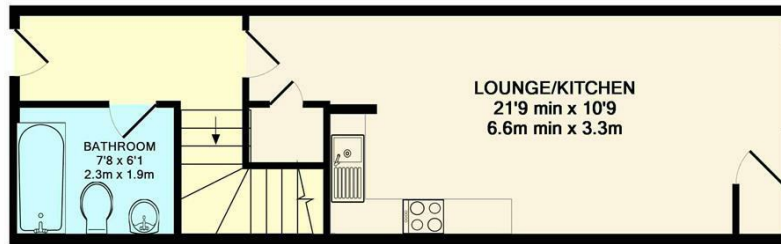
9 HARRINGTON HOUSE BRIGHTON ROAD HORSHAM, RH13 5BA

£230,000
LEASEHOLD

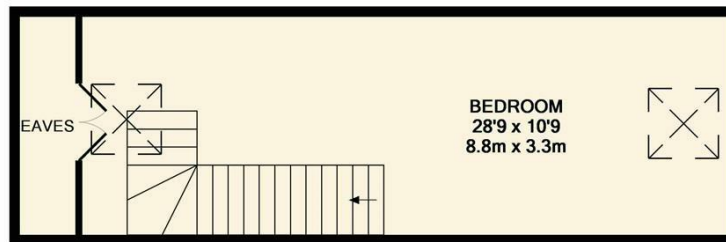
Eltons are delighted to present to the market this modern one Bedroom Duplex apartment located in central Horsham.

ELTONS

Estate Agents



GROUND FLOOR
APPROX. FLOOR
AREA 389 SQ.FT.
(36.2 SQ.M.)



1ST FLOOR
APPROX. FLOOR
AREA 363 SQ.FT.
(33.7 SQ.M.)

TOTAL APPROX. FLOOR AREA 753 SQ.FT. (69.9 SQ.M.)

Whilst every attempt has been made to ensure the accuracy of the floor plan contained here, measurements of doors, windows, rooms and any other items are approximate and no responsibility is taken for any error, omission, or mis-statement. This plan is for illustrative purposes only and should be used as such by any prospective purchaser. The services, systems and appliances shown have not been tested and no guarantee as to their operability or efficiency can be given
Made with Metropix ©2017



Energy Efficiency Rating		
	Current	Potential
Very energy efficient - lower running costs		
(92 plus) A		
(81-91) B		
(69-80) C		
(55-68) D		
(39-54) E		
(21-38) F		
(1-20) G		
Not energy efficient - higher running costs		
England & Wales	EU Directive 2002/91/EC	

Agents Note: Whilst every care has been taken to prepare these particulars, they are for guidance purposes only. All measurements are approximate and are for general guidance purposes only and whilst every care has been taken to ensure their accuracy, they should not be relied upon and potential buyers/tenants are advised to recheck the measurements

Eltons Estate Agents Horsham
13 - 15 Queen Street
Horsham
West Sussex
RH13 5AA

01403 299 771
sales@eltons.co.uk
eltons.co.uk

ELTONS

Estate Agents