



5 HAZEL CLOSE
HORSHAM, RH13 9GN

£775,000
FREEHOLD

Elton's Estate Agents are proud to present to the market this alluring four-bedroom detached home located in a quiet cul-de-sac within Southwater.

ELTONS

Estate Agents

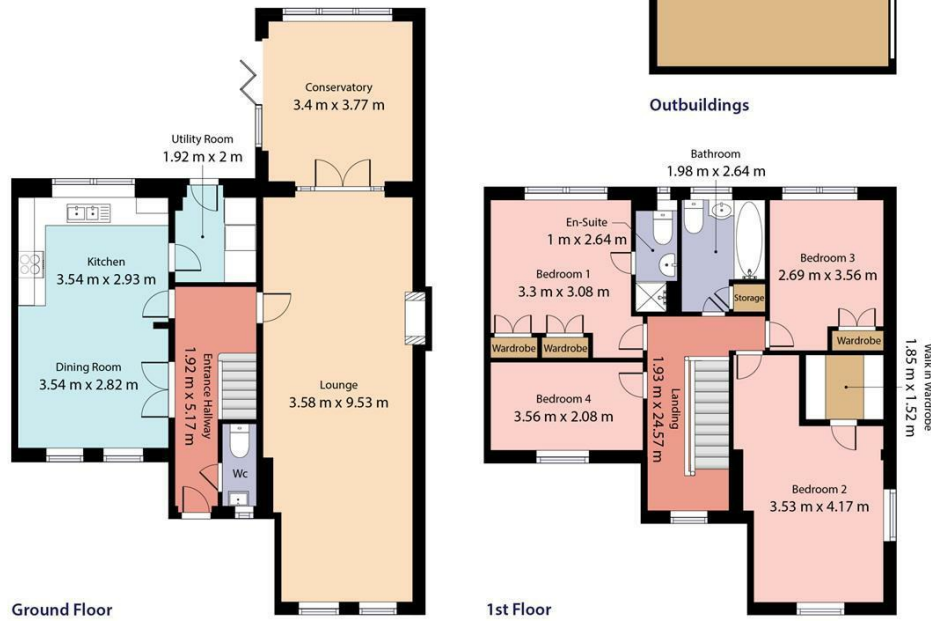
ELTONS

Estate Agents

Hazel Close, Southwater

Total floor area - 162 sq m (1739 sq ft)

(excluding garage)



Eltons estate agents Ltd have created this floorplan for illustrative purposes only and cannot be held responsible for any discrepancies or errors within. Windows, doors and room dimensions may not be to scale however every care has been taken to provide accurate measurements in writing.



Energy Efficiency Rating		
	Current	Potential
Very energy efficient - lower running costs		
(92 plus) A		84
(81-91) B		
(69-80) C		61
(55-68) D		
(39-54) E		
(21-38) F		
(1-20) G		
Not energy efficient - higher running costs		
England & Wales		EU Directive 2002/91/EC

Agents Note: Whilst every care has been taken to prepare these particulars, they are for guidance purposes only. All measurements are approximate and are for general guidance purposes only and whilst every care has been taken to ensure their accuracy, they should not be relied upon and potential buyers/tenants are advised to recheck the measurements

Eltons Estate Agents Horsham
13 - 15 Queen Street
Horsham
West Sussex
RH13 5AA

01403 299 771
sales@eltons.co.uk
eltons.co.uk

ELTONS

Estate Agents