

ELTONS

Estate Agents

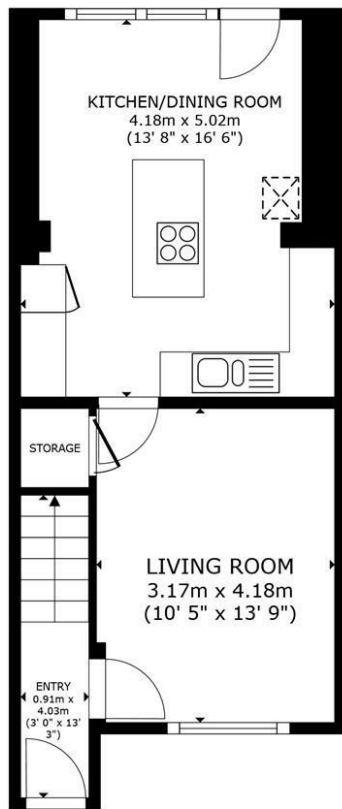


40 PRIMROSE COPSE HORSHAM

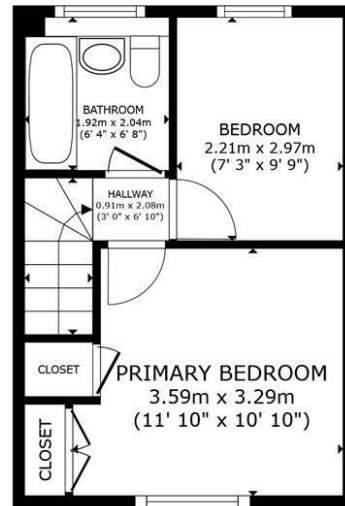
£385,000
FREEHOLD

Eltons are delighted to present to the market this delightful two bedroom terraced property located in Holbrook, Horsham.





FLOOR 1



FLOOR 2

ELTONS

Estate Agents

GROSS INTERNAL AREA
FLOOR 1 40.0 m² (430 sq.ft.) FLOOR 2 27.0 m² (290 sq.ft.)
TOTAL : 66.9 m² (721 sq.ft.)
SIZES AND DIMENSIONS ARE APPROXIMATE, ACTUAL MAY VARY.

Matterport



Energy Efficiency Rating		
	Current	Potential
Very energy efficient - lower running costs		
(92 plus) A		90
(81-91) B		
(69-80) C	73	
(55-68) D		
(39-54) E		
(21-38) F		
(1-20) G		
Not energy efficient - higher running costs		
England & Wales		EU Directive 2002/91/EC

Agents Note: Whilst every care has been taken to prepare these particulars, they are for guidance purposes only. All measurements are approximate and are for general guidance purposes only and whilst every care has been taken to ensure their accuracy, they should not be relied upon and potential buyers/tenants are advised to recheck the measurements

Eltons Estate Agents Horsham 01403 299 771
13 - 15 Queen Street sales@eltons.co.uk
Horsham eltons.co.uk
West Sussex
RH13 5AA

ELTONS
Estate Agents