



**4 CHEESMER WAY**  
**HORSHAM, RH12 3UY**

**£620,000**  
**FREEHOLD**

Eltons estate agents are delighted to present to the market this stunning four bedroom detached property in Broadbridge Heath.

**ELTONS**

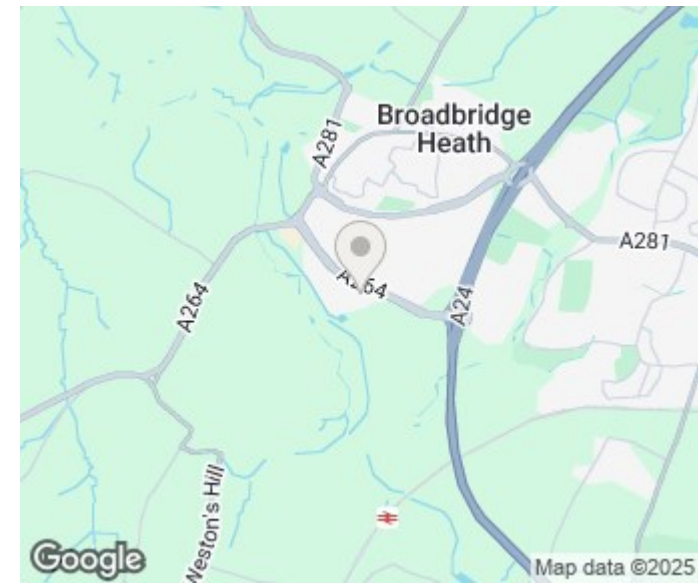
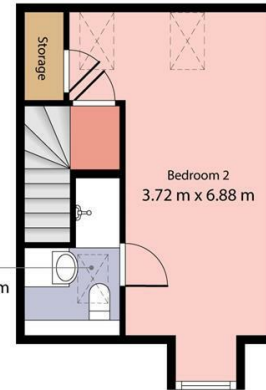
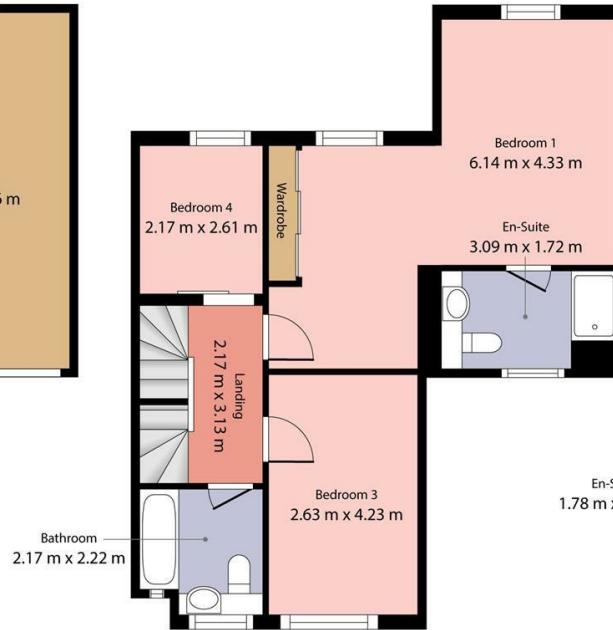
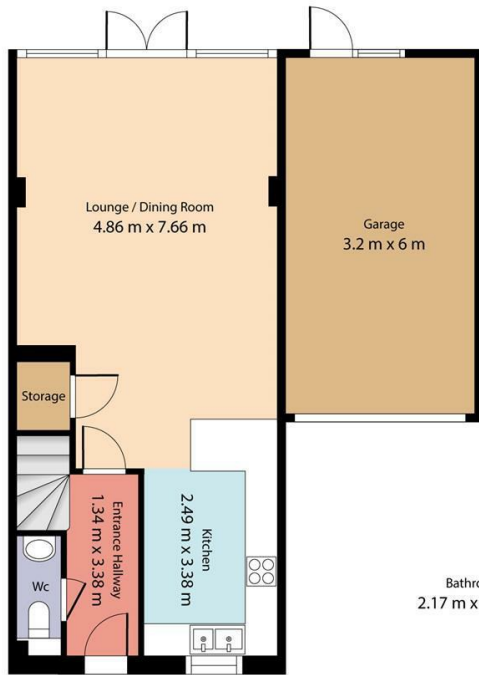
**Estate Agents**

# ELTONS

Estate Agents

Cheesmer Way, Broadbridge Heath  
Total floor area - 143 sq m (1541 sq ft)  
(excluding garage)

\*\*Eltons estate agents Ltd have created this floor plan for illustrative purposes only and cannot be held responsible for any discrepancies or errors within. Windows, doors and room dimensions may not be to scale however every care has been taken to provide accurate measurements in



| Energy Efficiency Rating                    |                         |           |
|---|-------------------------|-----------|
|   | Current                 | Potential |
| Very energy efficient - lower running costs |                         |           |
| (92 plus) <b>A</b>                          |                         | 96        |
| (81-91) <b>B</b>                            | 84                      |           |
| (69-80) <b>C</b>                            |                         |           |
| (55-68) <b>D</b>                            |                         |           |
| (39-54) <b>E</b>                            |                         |           |
| (21-38) <b>F</b>                            |                         |           |
| (1-20) <b>G</b>                             |                         |           |
| Not energy efficient - higher running costs |                         |           |
| <b>England &amp; Wales</b>                  | EU Directive 2002/91/EC |           |

Agents Note: Whilst every care has been taken to prepare these particulars, they are for guidance purposes only. All measurements are approximate and are for general guidance purposes only and whilst every care has been taken to ensure their accuracy, they should not be relied upon and potential buyers/tenants are advised to recheck the measurements

Eltons Estate Agents Horsham  
13 - 15 Queen Street  
Horsham  
West Sussex  
RH13 5AA

01403 299 771  
sales@eltons.co.uk  
eltons.co.uk

# ELTONS

Estate Agents