



2 PARK FARM CLOSE

HORSHAM, RH12 5EU

£700,000
FREEHOLD

Eltons Estate Agents are delighted to present to the market this spacious detached four bedroom property nestled within the highly sought after Holbrook, Horsham.

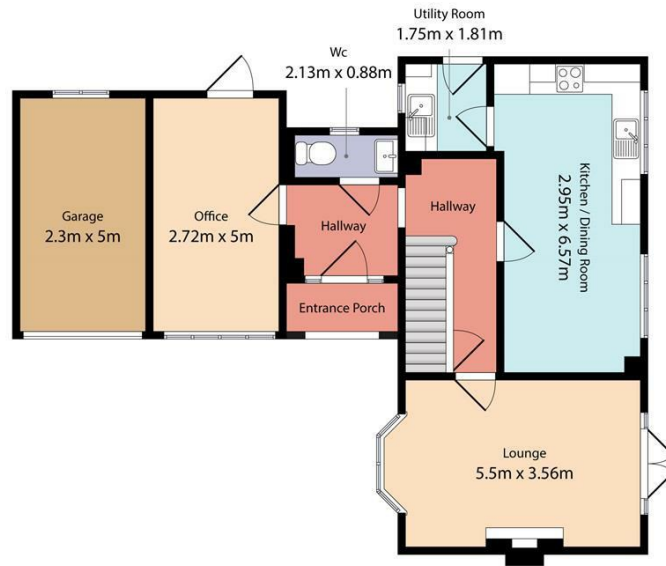
ELTONS

Estate Agents

Park Farm Close, Horsham

Total floor area - 122.2 sq m (1315.3 sq ft)

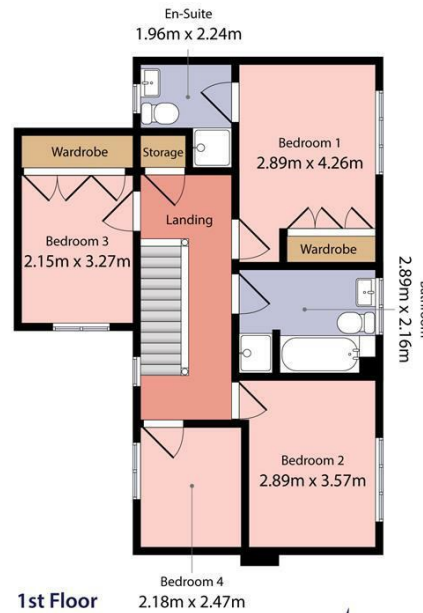
(area excluding garage)



Ground Floor

ELTONS

Estate Agents



1st Floor

Eltons estate agents Ltd have created this floor plan for illustrative purposes only and cannot be held responsible for any discrepancies or errors within. Windows, doors and room dimensions may not be to scale however every care has been taken to provide accurate measurements in writing.



Energy Efficiency Rating		
	Current	Potential
Very energy efficient - lower running costs		
(92 plus) A		
(81-91) B		
(69-80) C	69	80
(55-68) D		
(39-54) E		
(21-38) F		
(1-20) G		
Not energy efficient - higher running costs		
England & Wales	EU Directive 2002/91/EC	

Agents Note: Whilst every care has been taken to prepare these particulars, they are for guidance purposes only. All measurements are approximate and are for general guidance purposes only and whilst every care has been taken to ensure their accuracy, they should not be relied upon and potential buyers/tenants are advised to recheck the measurements

Eltons Estate Agents Horsham
13 - 15 Queen Street
Horsham
West Sussex
RH13 5AA

01403 299 771
sales@eltons.co.uk
eltons.co.uk

ELTONS

Estate Agents