

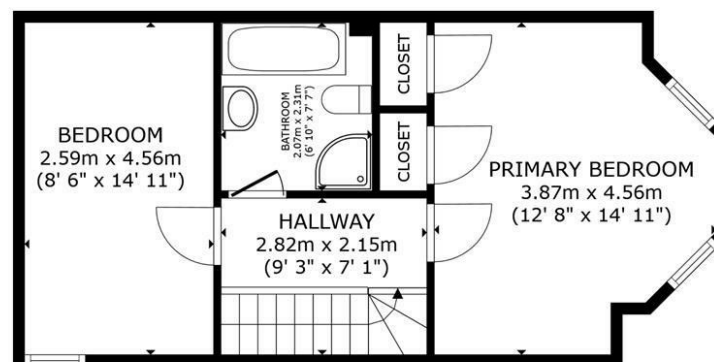
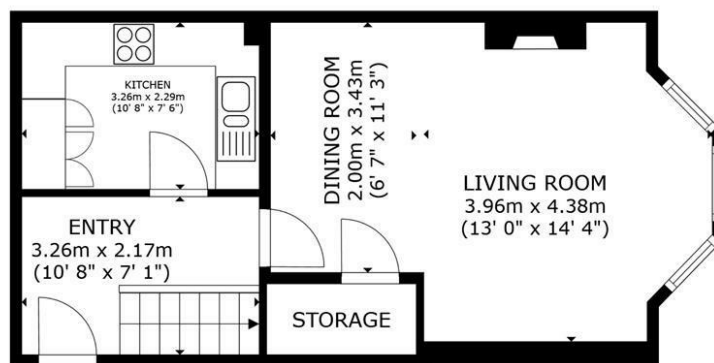


5 MEWS HOUSE FOREST ROAD HORSHAM

£390,000
FREEHOLD

- STUNNING TWO-BEDROOM MEWS PROPERTY LOCATED IN RURAL SCENIC ROFFEY PARK
- OFFERS TWO LARGE CAR PARKS ALLOWING FOR TWO UNALLOCATED PARKING SPACES
- LARGE LIVING SPACE WITH BREATHTAKING VIEWS
- 19 ACRES OF GARDENS AND WOODLAND WITH IMPRESSIVE AND ANCIENT TREES
- CHARACTER/PERIOD PROPERTY BUILT IN THE 1800'S
- TWO SPACIOUS DOUBLE BEDROOMS
- WALKING DISTANCE TO ST-LEONARDS FOREST AND SURROUNDING COUNTRYSIDE
- FAYGATE TRAIN STATION 0.93MI, LITTLEHAVEN TRAIN STATION 1.66MI AND HORSHAM TRAIN STATION 2.44MI FROM PROPERTY



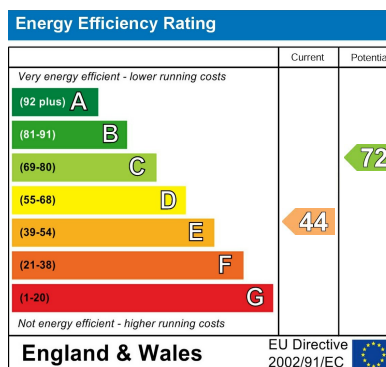


ELTONS

Estate Agents

GROSS INTERNAL AREA
FLOOR 1 40.5 m² (436 sq.ft.) FLOOR 2 40.6 m² (437 sq.ft.)
TOTAL : 81.1 m² (873 sq.ft.)
SIZES AND DIMENSIONS ARE APPROXIMATE, ACTUAL MAY VARY.

Matterport



Agents Note: Whilst every care has been taken to prepare these particulars, they are for guidance purposes only. All measurements are approximate and are for general guidance purposes only and whilst every care has been taken to ensure their accuracy, they should not be relied upon and potential buyers/tenants are advised to recheck the measurements

Eltons Estate Agents Horsham 01403 299 771
13 - 15 Queen Street
Horsham
West Sussex
RH13 5AA

sales@eltons.co.uk
eltons.co.uk

ELTONS
Estate Agents