



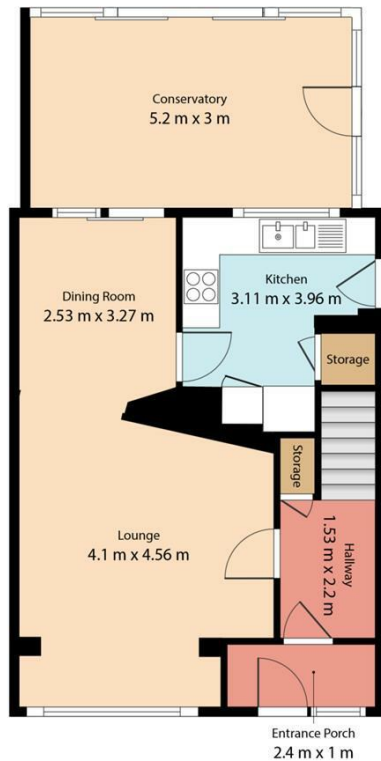
17 WEALDON CLOSE
HORSHAM, RH13 9HP

£500,000
FREEHOLD

Eltons are delighted to be able to bring to market this spacious three bedroom property in Southwater.

ELTONS

Estate Agents

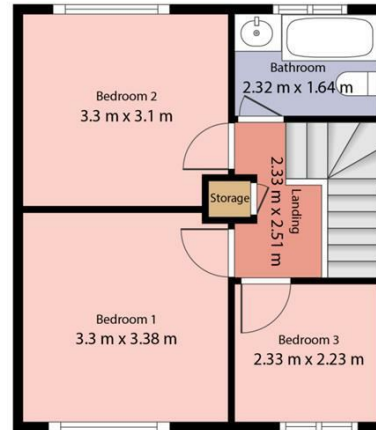
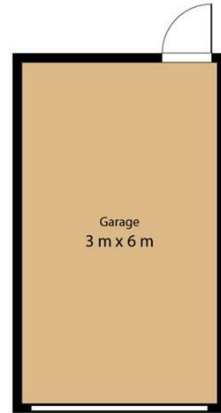


Ground Floor

ELTONS
Estate Agents

Wealdon Close, Southwater

Total floor area - 100 sq m (1073 sq ft) approx
(excluding garage)



1st Floor

Eltons estate agents Ltd have created this floorplan for illustrative purposes only and cannot be held responsible for any discrepancies or errors within. Windows, doors and room dimensions may not be to scale however every care has been taken to provide accurate measurements in writing.



Energy Efficiency Rating		
	Current	Potential
Very energy efficient - lower running costs		
(92 plus) A		84
(81-91) B		
(69-80) C	70	
(55-68) D		
(39-54) E		
(21-38) F		
(1-20) G		
Not energy efficient - higher running costs		
England & Wales	EU Directive 2002/91/EC	

Agents Note: Whilst every care has been taken to prepare these particulars, they are for guidance purposes only. All measurements are approximate and are for general guidance purposes only and whilst every care has been taken to ensure their accuracy, they should not be relied upon and potential buyers/tenants are advised to recheck the measurements

Eltons Estate Agents Horsham
13 - 15 Queen Street
Horsham
West Sussex
RH13 5AA

01403 299 771
sales@eltons.co.uk
eltons.co.uk

ELTONS

Estate Agents