



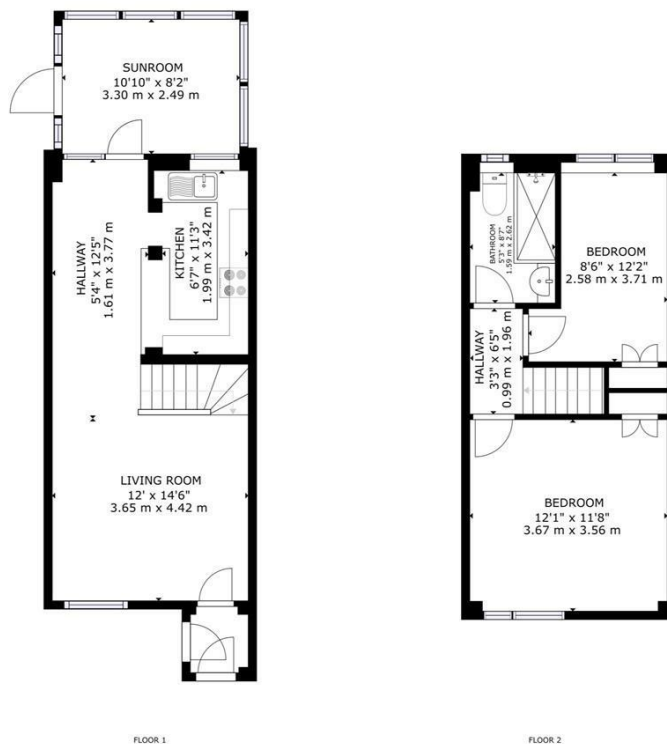
33 THELTON AVENUE
HORSHAM, RH12 3AX

£365,000
FREEHOLD

Eltons are delighted to present to the market this attractive two bedroom, end of terrace property located on the sought after Thelton Avenue in Broadbridge Heath.

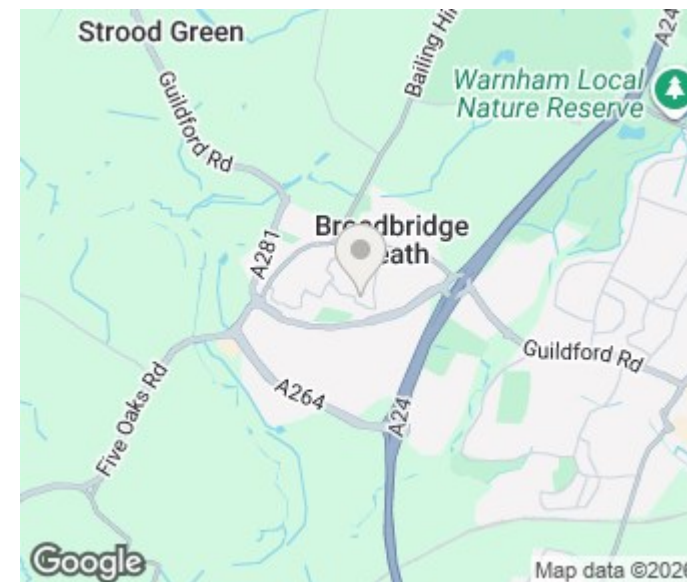
ELTONS

Estate Agents



ELTONS
Estate Agents

GROSS INTERNAL AREA
FLOOR 1: 428 sq ft, 39.79 m², FLOOR 2: 330 sq ft, 30.64 m²
TOTAL: 758 sq ft, 70.43 m²
SIZES AND DIMENSIONS ARE APPROXIMATE, ACTUAL MAY VARY



Energy Efficiency Rating		
	Current	Potential
Very energy efficient - lower running costs		
(92 plus) A		
(81-91) B		
(69-80) C		
(55-68) D		
(39-54) E		
(21-38) F		
(1-20) G		
Not energy efficient - higher running costs		
England & Wales	EU Directive 2002/91/EC	

Agents Note: Whilst every care has been taken to prepare these particulars, they are for guidance purposes only. All measurements are approximate and are for general guidance purposes only and whilst every care has been taken to ensure their accuracy, they should not be relied upon and potential buyers/tenants are advised to recheck the measurements

Eltons Estate Agents Horsham
13 - 15 Queen Street
Horsham
West Sussex
RH13 5AA

01403 299 771
sales@eltons.co.uk
eltons.co.uk

ELTONS
Estate Agents