

ELTONS

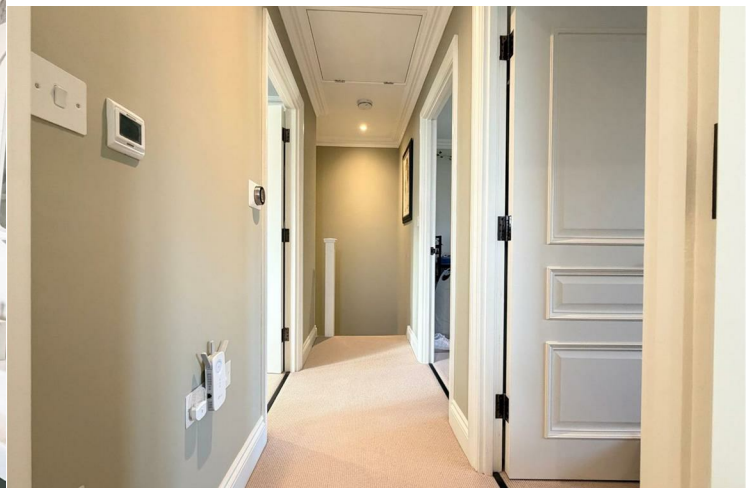
Estate Agents

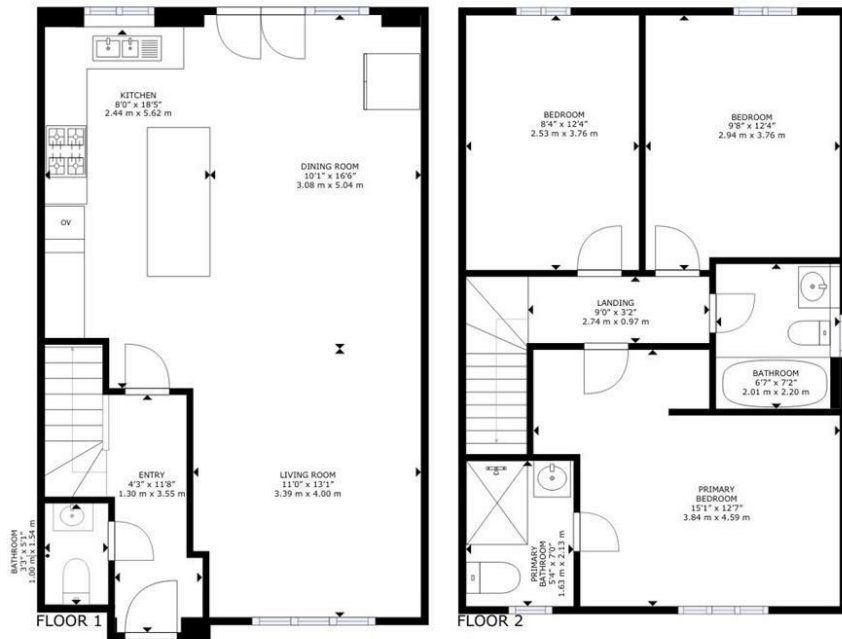


## TREE COTTAGE HOLM OAKS HORSHAM

£500,000  
FREEHOLD

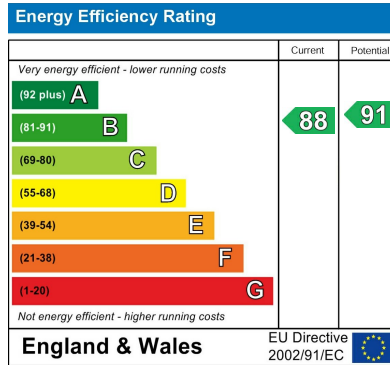
- IMMACULATE THREE DOUBLE BEDROOM SEMI DETACHED HOUSE
- MODERN KITCHEN WITH INTEGRATED APPLIANCES
- MASTER BEDROOM WITH EN-SUITE SHOWER ROOM
- FAMILY BATHROOM WITH SHOWER OVER BATH
- DRIVEWAY FOR THREE CARS
- SPACIOUS OPEN PLAN KITCHEN/DINING/LIVING AREA FINISHED TO THE HIGHEST SPECIFICATION
- DOWNSTAIRS W/C
- TWO FURTHER DOUBLE BEDROOMS
- LANDSCAPED REAR GARDEN
- GUIDE PRICE £500,000 - £525,000





**ELTONS**  
Estate Agents

GROSS INTERNAL AREA  
FLOOR 1: 528 sq. ft, 49 m<sup>2</sup> FLOOR 2: 513 sq. ft, 48 m<sup>2</sup>  
TOTAL : 1,041 sq. ft, 97 m<sup>2</sup>  
SIZES AND DIMENSIONS ARE APPROXIMATE, ACTUAL MAY VARY.



Agents Note: Whilst every care has been taken to prepare these particulars, they are for guidance purposes only. All measurements are approximate and are for general guidance purposes only and whilst every care has been taken to ensure their accuracy, they should not be relied upon and potential buyers/tenants are advised to recheck the measurements

**Eltons Estate Agents Horsham** 01403 299 771  
13 - 15 Queen Street  
Horsham  
West Sussex  
RH13 5AA  
sales@eltons.co.uk  
eltons.co.uk

**ELTONS**  
Estate Agents