



POTTLES COTTAGE HENFIELD ROAD
COWFOLD, RH13 8DR

£565,000
FREEHOLD

Elton's is delighted to present to the market this three bedroom semi-detached home located in the village of Cowfold.

ELTONS

Estate Agents

Eltons estate agents Ltd have created this floor plan for illustrative purposes only and cannot be held responsible for any discrepancies or errors within. Windows, doors and room dimensions may not be to scale however every care has been taken to provide accurate measurements in writing.

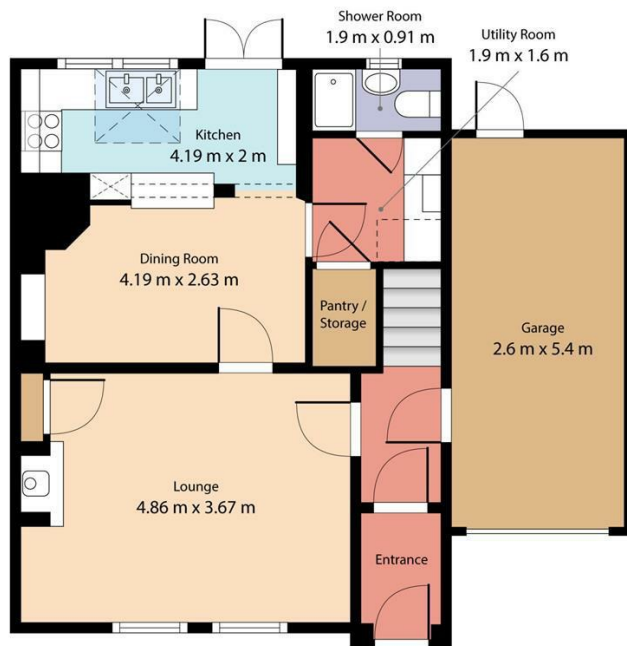


Pottles Cottage, Cowfold

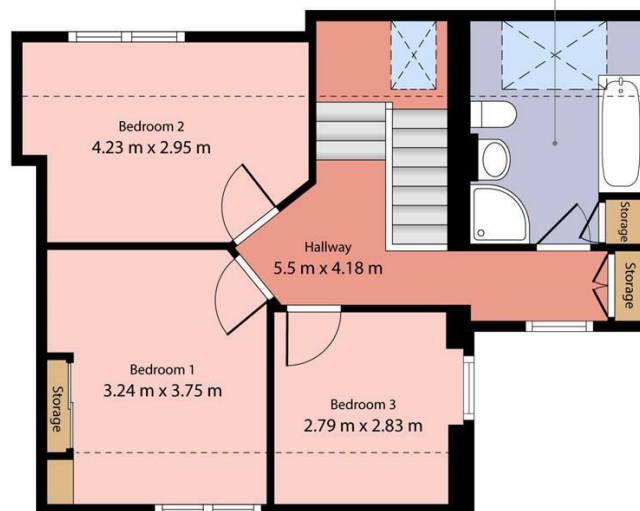
Total floor area - 105.3 sq m (1134 sq ft)
(excluding garage & storage)

ELTONS

Estate Agents



Ground Floor



1st Floor



Energy Efficiency Rating		
	Current	Potential
Very energy efficient - lower running costs		
(92 plus) A		
(81-91) B		
(69-80) C		72
(55-68) D		
(39-54) E		
(21-38) F	31	
(1-20) G		
Not energy efficient - higher running costs		
England & Wales	EU Directive 2002/91/EC	

Agents Note: Whilst every care has been taken to prepare these particulars, they are for guidance purposes only. All measurements are approximate and are for general guidance purposes only and whilst every care has been taken to ensure their accuracy, they should not be relied upon and potential buyers/tenants are advised to recheck the measurements

Eltons Estate Agents Horsham
13 - 15 Queen Street
Horsham
West Sussex
RH13 5AA

01403 299 771
sales@eltons.co.uk
eltons.co.uk

ELTONS

Estate Agents