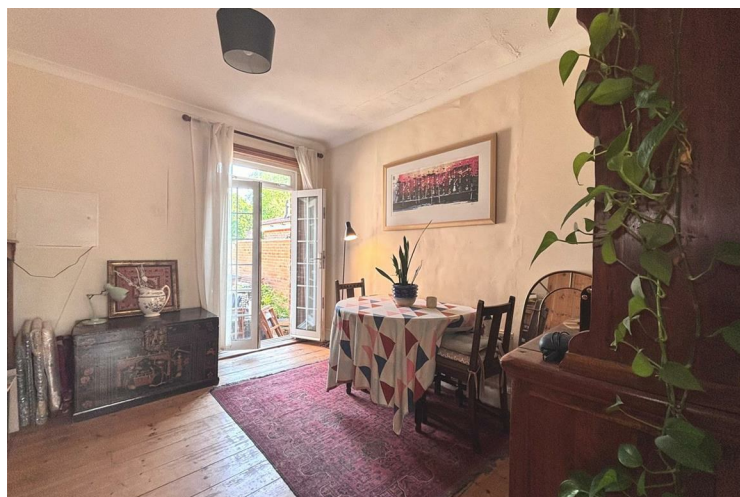


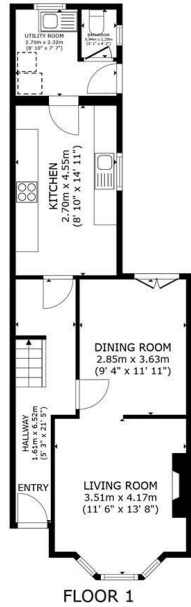


104 CLARENCE ROAD HORSHAM

£560,000
FREEHOLD

- RARE OPPORTUNITY TO PURCHASE IN THIS HIGHLY SOUGHT AFTER LOCATION WITH STUNNING SCOPE
- SPACIOUS LOUNGE WITH BAY WINDOW AND OPEN FIREPLACE
- THREE DOUBLE BEDROOMS
- DOWNSTAIRS W/C
- DRIVEWAY FOR TWO CARS
- THREE BEDROOM CHARACTER SEMI-DETACHED PROPERTY
- 2ND RECEPTION ROOM OFFERING DINING OR STUDY
- BATHROOM WITH SHOWER OVER BATH
- KITCHEN WITH SEPARATE LAUNDRY ROOM
- GOOD SIZED REAR GARDEN





ELTONS
Estate Agents



FLOOR 2

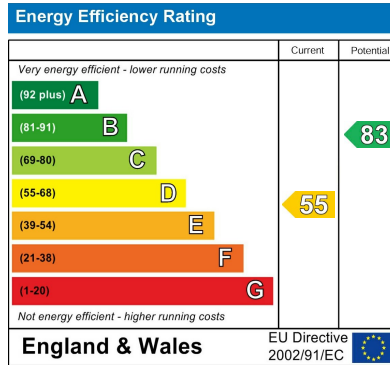
GROSS INTERNAL AREA
FLOOR 1 53.0 m² (570 sq.ft.) FLOOR 2 46.7 m² (503 sq.ft.)
TOTAL: 99.7 m² (1,073 sq.ft.)
SIZES AND DIMENSIONS ARE APPROXIMATE, ACTUAL MAY VARY.

Matterport

ELTONS
Estate Agents

GROSS INTERNAL AREA
FLOOR 1 53.0 m² (570 sq.ft.) FLOOR 2 46.7 m² (503 sq.ft.)
TOTAL: 99.7 m² (1,073 sq.ft.)
SIZES AND DIMENSIONS ARE APPROXIMATE, ACTUAL MAY VARY.

Matterport



Agents Note: Whilst every care has been taken to prepare these particulars, they are for guidance purposes only. All measurements are approximate and are for general guidance purposes only and whilst every care has been taken to ensure their accuracy, they should not be relied upon and potential buyers/tenants are advised to recheck the measurements

Eltons Estate Agents Horsham 01403 299 771
13 - 15 Queen Street sales@eltons.co.uk
Horsham eltons.co.uk
West Sussex
RH13 5AA

ELTONS
Estate Agents