

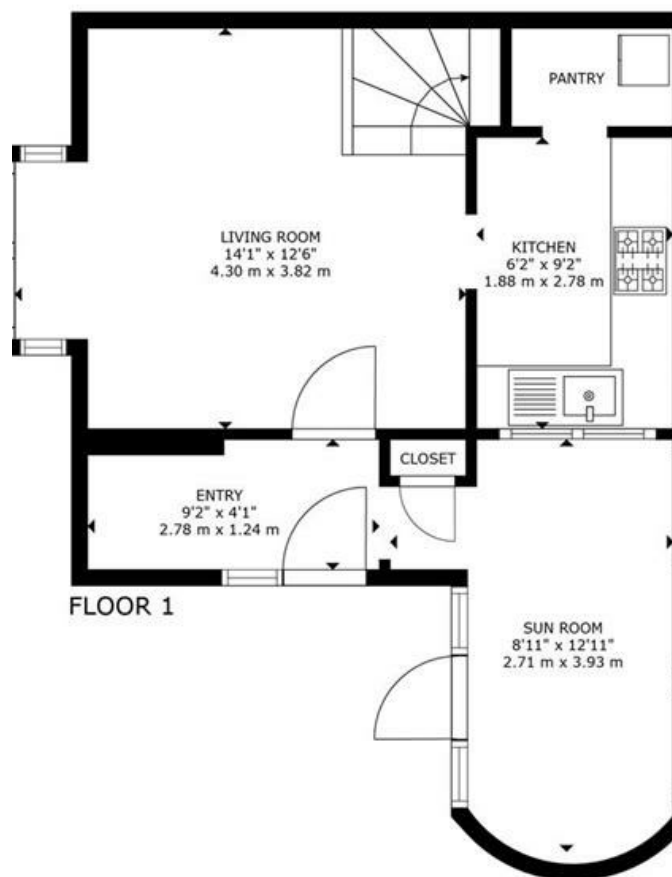


25 TYLDEN WAY HORSHAM

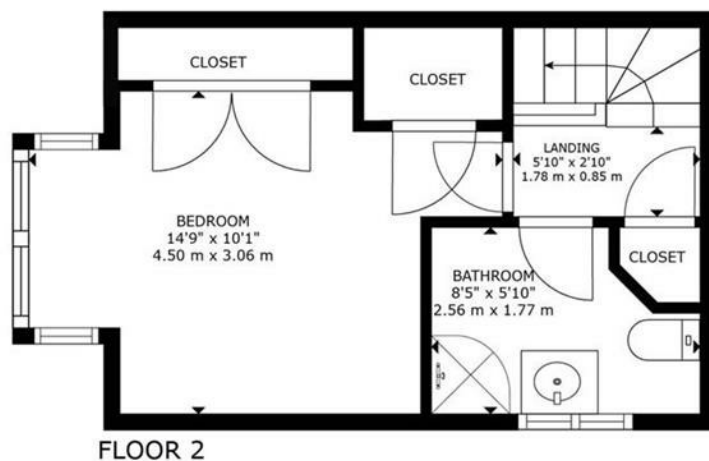
£325,000
FREEHOLD

- RARELY AVAILABLE ONE BEDROOM SEMI-DETACHED HOUSE
- MODERN FITTED KITCHEN WITH SOME WHITE GOODS INCLUDED
- CONSERVATORY WITH DOORS TO GARDEN
- DOUBLE BEDROOM WITH VAULTED CEILING AND BUILT IN WARDROBES
- MODERN FITTED SHOWER ROOM
- PRIVATE SOUTH EAST FACING REAR GARDEN
- TWO ALLOCATED PARKING SPACES

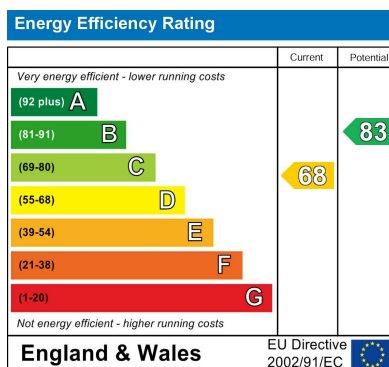




GROSS INTERNAL AREA
FLOOR 1: 380 sq. ft, 35 m², FLOOR 2: 236 sq. ft, 21 m²
TOTAL: 616 sq. ft, 56 m²
SIZES AND DIMENSIONS ARE APPROXIMATE, ACTUAL MAY VARY.



GROSS INTERNAL AREA
FLOOR 1: 380 sq. ft, 35 m², FLOOR 2: 236 sq. ft, 21 m²
TOTAL: 616 sq. ft, 56 m²
SIZES AND DIMENSIONS ARE APPROXIMATE, ACTUAL MAY VARY.



Agents Note: Whilst every care has been taken to prepare these particulars, they are for guidance purposes only. All measurements are approximate and are for general guidance purposes only and whilst every care has been taken to ensure their accuracy, they should not be relied upon and potential buyers/tenants are advised to recheck the measurements

Eltons Estate Agents Horsham 01403 299 771
13 - 15 Queen Street
Horsham
West Sussex
RH13 5AA
sales@eltons.co.uk
eltons.co.uk

ELTONS
Estate Agents