

ELTONS

Estate Agents

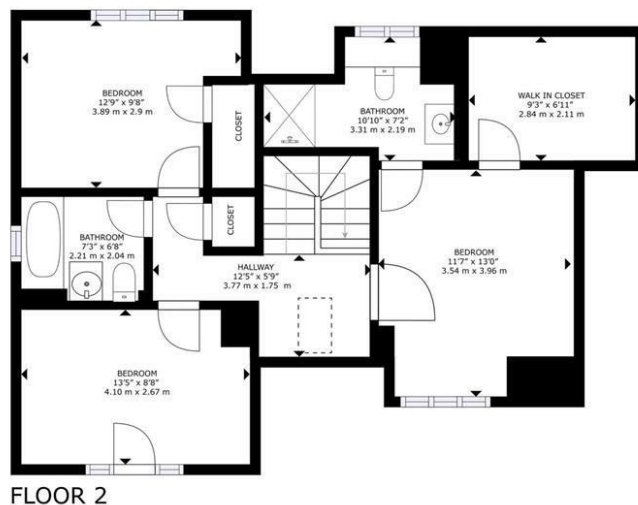
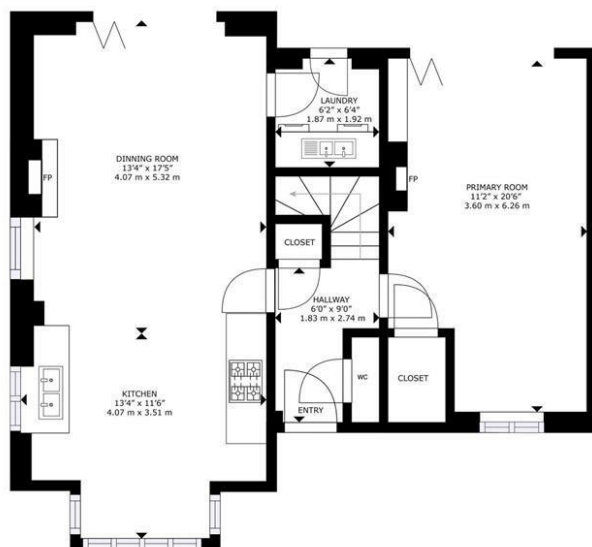


**20 BENSONS HILL ROAD
CRAWLEY**

**£700,000
FREEHOLD**

Nestled within the desirable Woodgate Thakeham development in Pease Pottage, this immaculate three-bedroom detached house offers a perfect blend of modern living and elegant design. The property is situated on a spacious corner plot, providing ample outdoor space and a sense of privacy.





ELTONS
Estate Agents

GROSS INTERNAL AREA
FLOOR PLAN: 749 sq. ft, 71 m², FLOOR 2: 685 sq. ft, 63 m²,
TOTAL: 1,434 sq. ft, 134 m²,
SIZES AND DIMENSIONS ARE APPROXIMATE, ACTUAL MAY VARY.

Matterport



Energy Efficiency Rating		
	Current	Potential
Very energy efficient - lower running costs		
(92 plus) A		92
(81-91) B	84	
(69-80) C		
(55-68) D		
(39-54) E		
(21-38) F		
(1-20) G		
Not energy efficient - higher running costs		
England & Wales	EU Directive 2002/91/EC	

Agents Note: Whilst every care has been taken to prepare these particulars, they are for guidance purposes only. All measurements are approximate and are for general guidance purposes only and whilst every care has been taken to ensure their accuracy, they should not be relied upon and potential buyers/tenants are advised to recheck the measurements

Eltons Estate Agents Horsham 01403 299 771
13 - 15 Queen Street sales@eltons.co.uk
Horsham eltons.co.uk
West Sussex
RH13 5AA

ELTONS
Estate Agents