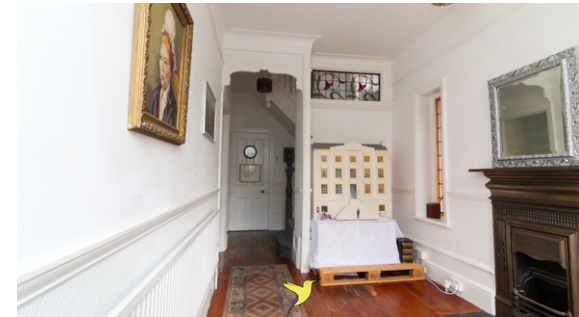


4 Bedroom Terraced House  
Earlsthorne Road, Sydenham  
London, SE26 4PD



HARPER JAYNE HOMES

Asking Price  
£1,180,000

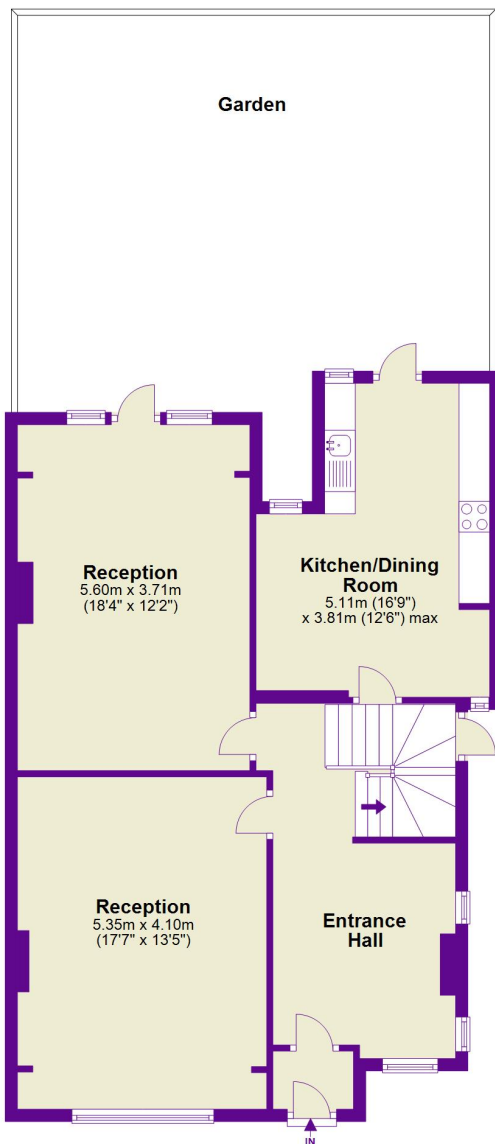


## **Earlsthorne Road, Sydenham**

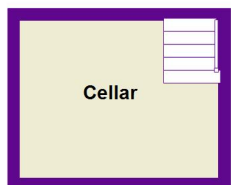
A rare opportunity for you to acquire a beautiful 4 bedroom, link semi-detached Edwardian home steeped in history on the sought after 'Thorpe Estate' in Sydenham. This property is elegant both internally and externally, featuring the stunning red-bricked Edwardian design and gorgeous stained glass windows.

- Beautiful Edwardian Building
- Freehold
- Four bedrooms
- Two receptions
- Two additional hobby rooms in loft - A Gym and office
- Original features

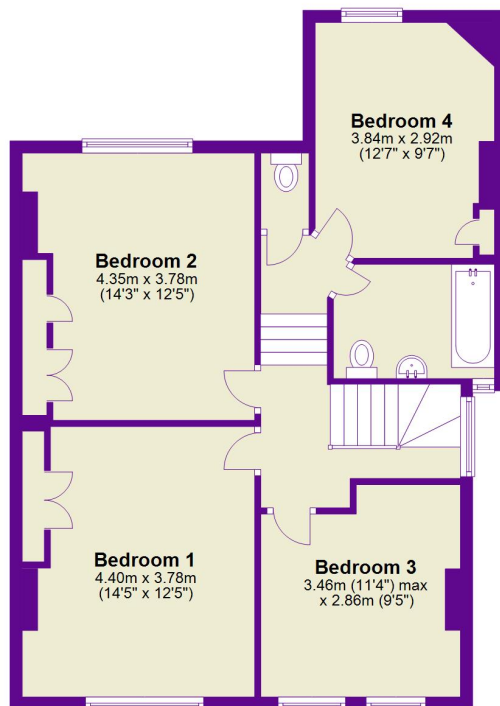
**Ground Floor**  
Approx. 80.1 sq. metres (861.7 sq. feet)



**Basement**  
Approx. 0.0 sq. metres (0.0 sq. feet)

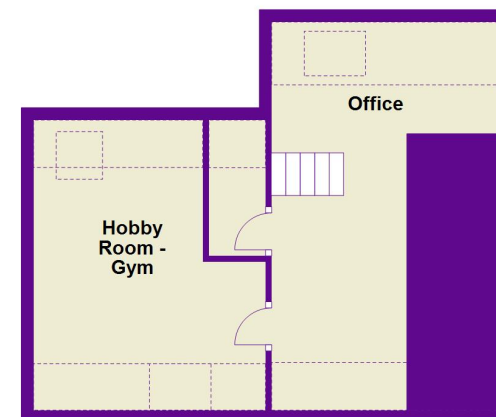


**First Floor**  
Approx. 70.9 sq. metres (762.7 sq. feet)



Energy Efficiency Rating		Current	Potential
Very energy efficient - lower running costs			
(92-100)	<b>A</b>		
(81-91)	<b>B</b>		
(69-80)	<b>C</b>		75
(55-68)	<b>D</b>		
(39-54)	<b>E</b>	50	
(21-38)	<b>F</b>		
(1-20)	<b>G</b>		
Not energy efficient - higher running costs			

**Second Floor**  
Approx. 0.0 sq. metres (0.0 sq. feet)



Total area: approx. 150.9 sq. metres (1624.4 sq. feet)

This floor plan is for illustrative purposes only. Measurements, floor areas, openings (windows and doors), orientations and room titles are approximations. Measurements should not be relied upon for any installations, statement or contracts. No liability is taken for any error. All parties must rely on their own inspection.  
Plan produced using PlanUp.