

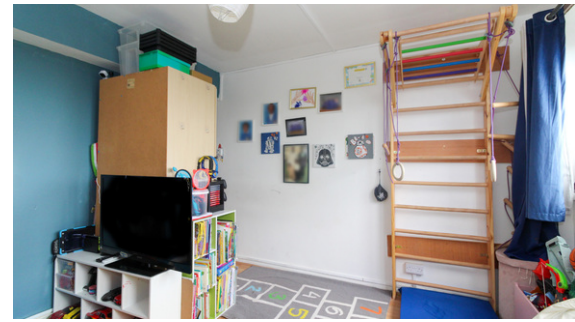


HARPER JAYNE HOMES



2 Bedroom Apartment / Flat
Whittaker Court, Studley Road
London, SW4 6RU

Guide Price
£375,000



Whittaker Court, Studley Road

Located just a 0.2 mile walk from Stockwell Tube Station, this flat is ideal for those seeking a convenient lifestyle.

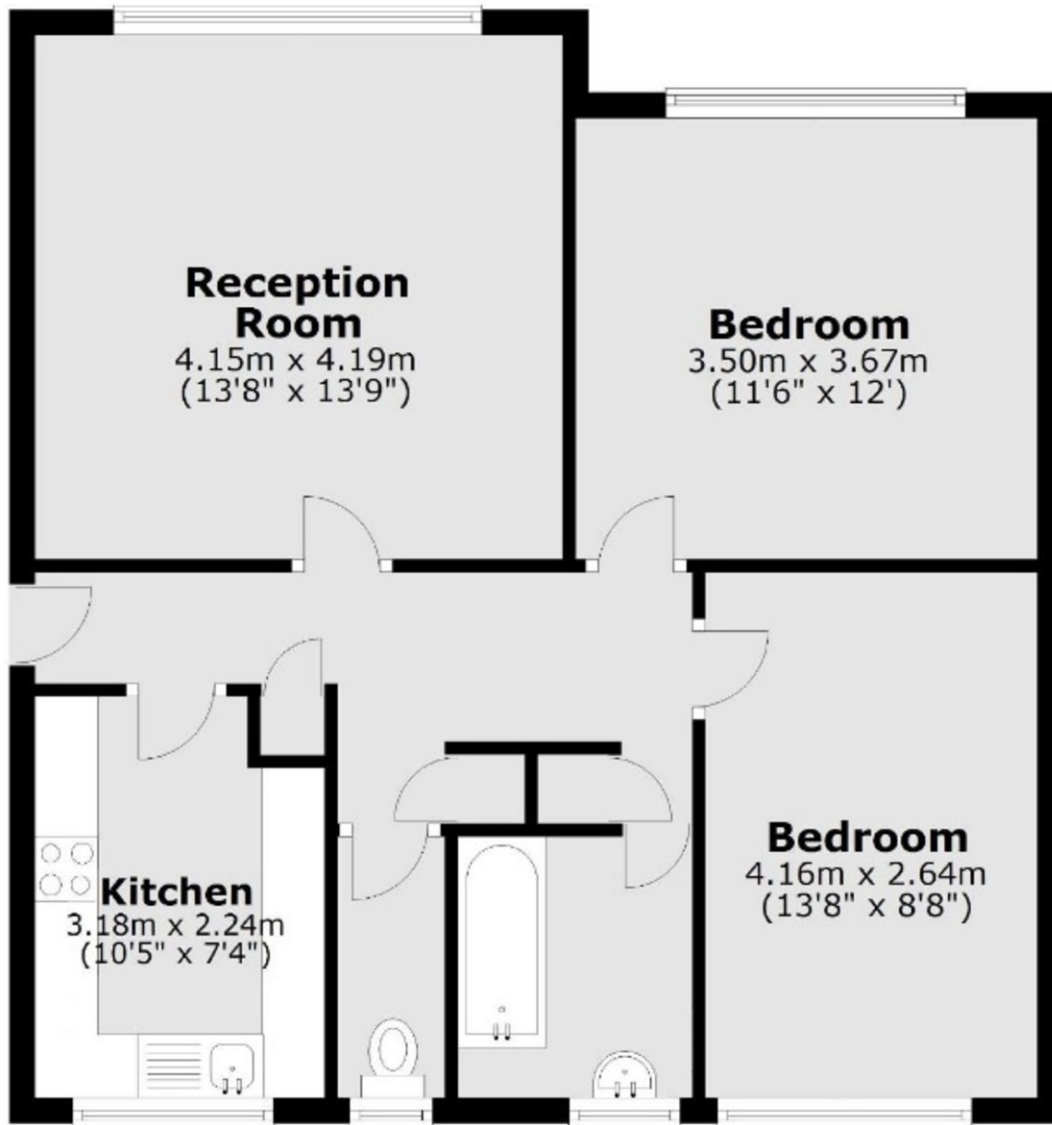
There are two spacious double bedrooms, a well-equipped kitchen, large reception room excellent for guest, a stylish bathroom and separate toilet. Each room allows for stunning views and plenty of light from the windows.

Offering a comfortable living space and a range of desirable features, this property is a perfect choice for individuals, families or investors.

Stockwell has a vibrant community and excellent amenities. With shops, restaurants, transport links and parks.

Sales Valuation: £375,000 - £385,000

Rent Valuation: £1,800 per calendar month



Total area: approx. 64.5 sq. metres (694.1 sq. feet)

Energy Efficiency Rating		
	Current	Potential
Very energy efficient - lower running costs		
(92-100) A		
(81-91) B		
(69-80) C	71	71
(55-68) D		
(39-54) E		
(21-38) F		
(1-20) G		
Not energy efficient - higher running costs		

Tenure: Leasehold
Lease length remaining: 104 years
Service Charge: TBC
Ground Rent: TBC
Local Authority: Lambeth
Council Tax Band: B