



www.centro-pic.uk | Telephone 020 8401 5000
 www.christiesworld.com | Telephone 020 8643 7777

MAYFAIR OFFICE.CO.UK

onTheMarket.com

zoopla.co.uk

rightmove

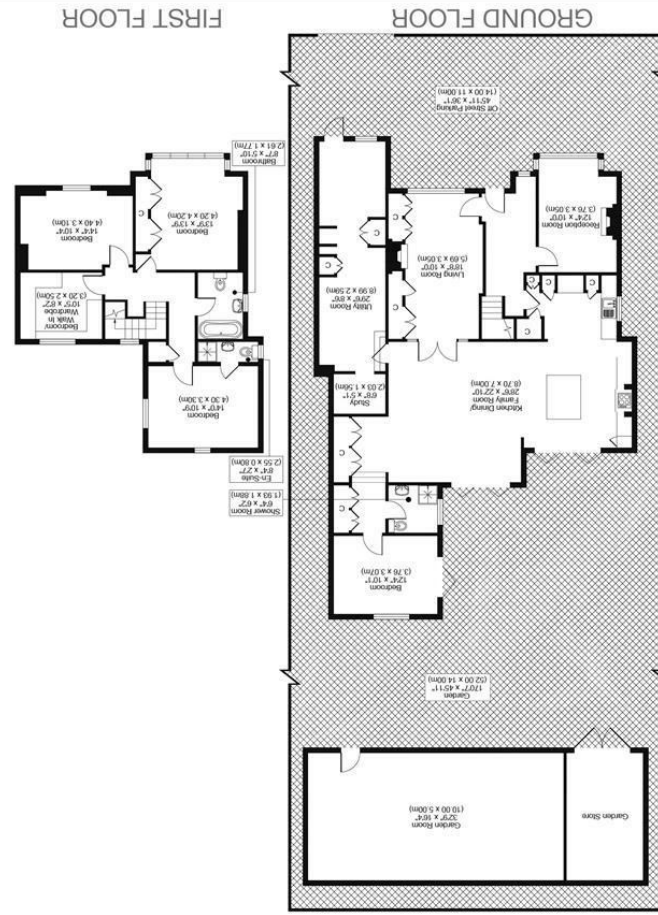
RICS

The Property Ombudsman

CHRISTIES

optica
 MEDA
 optimedia.co.uk

All measurements, walls, doors, windows, fittings and their appliances, their size and locations are shown conventionally and are approximate only and cannot be regarded as being a representation either by the seller or his agent.



BUCKLES WAY, SM7
 TOTAL APPROX FLOOR PLAN AREA INCLUDING OUTBUILDING 3182 SQ.FT (296 SQ.M)
 TOTAL APPROX FLOOR PLAN AREA EXCLUDING OUTBUILDING 2486 SQ.FT (231 SQ.M)



CHRISTIES



CHRISTIES' REPUTATION FOR BRINGING THE VERY BEST OF LOCAL PROPERTIES TO THE MARKET CONTINUES WITH OUR OFFERING OF THIS SIMPLY STUNNING FIVE BEDROOM/THREE BATHROOM DETACHED FAMILY HOME WHICH HAS BEEN FINISHED TO A MOST EXACTING STANDARD AND OFFERS ALL THE MODERN LUXURIES THAT THE DISCERNING BUYER MIGHT WANT, COUPLED WITH THE CHARM AND CHARACTER OF AN OLDER STYLE EXTERIOR. FEATURES OF PARTICULAR NOTE INCLUDE TWO GENEROUS FRONT FACING RECEPTION ROOMS, A SPECTACULAR GARDEN-FACING KITCHEN/DINING/LIVING ROOM WITH BIFOLD DOORS OUT ONTO A LARGE PATIO, A SEPARATE UTILITY ROOM, A FURTHER STUDY, A GROUND FLOOR BEDROOM WITH FABULOUS EN-SUITE, AND A SUBSTANTIAL GARDEN ROOM/HOME OFFICE/GAMES ROOM WHICH COULD EASILY LEND ITSELF TO A MULTITUDE OF USES. THE SPACIOUS, LIGHT, AND AIRY FEEL THROUGHOUT THE GROUND FLOOR EXTENDS TO UPSTAIRS WHERE YOU WILL FIND FOUR FURTHER BEDROOMS (ONE CURRENTLY FITTED OUT AS A DRESSING ROOM) AND TWO SUPERB BATHROOMS. THE REAR GARDEN IS ALSO A MAIN FEATURE OF THE PROPERTY AND IS IDEAL FOR ACTIVE CHILDREN AND FAMILY PARTIES. CHECK OUT OUR VIDEO OF THIS PROPERTY ON OUR YOU TUBE CHANNEL. THIS IS A FAMILY HOME NOT TO BE MISSED.

- SIMPLY STUNNING DETACHED FAMILY HOME IN HIGHLY REGARDED LOCATION
- FLEXIBLE ACCOMMODATION OFFERING FIVE BEDROOMS AND THREE BATHROOMS
- A VERY SPECIAL HOME WHICH SHOULD BE VIEWED WITHOUT DELAY - CALL US TODAY TO ARRANGE YOUR APPOINTMENT
- COUNCIL TAX BAND G
- EPC RATING D

