



# Welcome to Odette's Point

**AVANT**  
homes

# Contents

- Introducing Odette's Point
- Our promise to you
- About Avant Homes
- The buying process
- Why buy new
- Living in Keighley
- Development plan
- House type floor plans
- Our specification
- Mortgage advisor panel
- Solicitor panel







# Make your next step a reality

Looking for an amazing new home in Bradford? Then look no further than Odette's Point! Odette's Point offers a range of 3, 4 and 5 bedroom homes in Keighley, Bradford – all designed with style, comfort, and practicality in mind.

Each home features classic French doors, designer kitchens with integrated appliances, fashionable tiling, spacious rooms, and off-street parking. Whether you're taking your first steps on the property ladder, looking for more space for your family, downsizing, or anything else, you'll find a modern home with flexible spaces tailored to your needs.

Voted as the UK's next City of Culture for 2025, Odette's Point is nestled just eight miles from Bradford City Centre, providing a prime location for commuters. The development is served by regular bus services and is a short walk away from Keighley Railway Station where you can catch direct services to Leeds, Carlisle, Bradford, and Bingley, amongst other destinations. Keighley also still operates a heritage steam railway – the Keighley and Worth Valley Railway – offering a classic and more sophisticated way to get around.



# Our promise to you

We are committed to delivering a first class customer service. This means we care about what happens before and after you get the keys, ensuring your new home journey is rewarding and enjoyable too.

We are on the New Homes Quality Boards register of registered developers. We fully adhere to the New Homes Quality Code and the New Homes Ombudsman Service.



# Who we are.

We build affordable homes across the Midlands, Yorkshire, North West, North East and Scotland, helping our buyers make their dream home a reality.

We have a wide range of house styles available, giving you the optionality to choose the space that's right for you. Whether it's a 1 bedroom bungalow, or a 2 bedroom terrace, a 3 storey townhouse, or a 4 or 5 bedroom detached home, we have something for everyone at an Avant development.







With a design and specification that's perfect for modern living, we think about all you need inside and out. When selecting our locations, Avant consider transport links, amenities, and schools, ensuring our developments are in the perfect areas for solo buyers, couples, and families alike. We create new communities of likeminded people in the best places. The right home for you, right where you want it!

We understand that building excellent homes must be done in a responsible way. That's why we're committed to protecting the planet. We aim, where possible, to minimise and mitigate our impact on the environment. We have in place robust policies to address issues around ecology, resource use and biodiversity, which see us manage environmental impacts throughout our development's lifecycle.

**So, if you're looking for your dream home, look no further.**

# Your buying journey

Here's a step by step guide through the exciting buying process.

## Taking the first steps

Find your dream home on one of our 60 developments located in 8 different regions across the UK.

## Check your budget

At the start of your home buying journey, find out what you can afford by speaking to one of our recommended new build specialists or find your own chosen financial advisor.

Once you've spoken to a mortgage specialist, you will be able to get a decision in principle which states your affordability. You'll also need to choose a solicitor to represent you throughout the home buying process. We can recommend a solicitor or you can find your own.



## Reservation time!

Now you can officially reserve your home at one of our Customer Appointment Centres. Your Sales Advisor will show you detailed drawings of your development, your plot, and much more. You'll need to provide your decision in principle, and your ID, and pay a small reservation fee.

Once reserved your solicitor will go through your draft contract and answer any questions. They'll also carry out searches and checks. Alongside this, your mortgage advisor will apply for your mortgage.



## Making your home yours

The best bit has arrived – your options meeting! In this meeting you will choose your options and any upgrades you want. Let your imagination run wild and personalise your new Avant home to your liking.

Take inspiration from our beautifully curated show homes and browse our selection of tiles, cupboard doors and worktop samples.



## Exchanging contracts

Once your contract is agreed you'll be asked to sign. This is called exchanging contracts in England and Conclude Missives in Scotland.

This stage is key, as it's when you become committed to buying your Avant home and can countdown to completion day!

## Final checks

We follow stringent processes to ensure we build a quality home. Once your home is build complete it will be inspected and a CML will be issued which gives you your 10 year warranty.

Following a pre-completion inspection, it's the moment you've been waiting for... a sneak preview of your home at your Home Demonstration meeting!





## Moving day

Finally! Once we're all ready to go, your solicitor will request your mortgage advance and any additional balances, ready to transfer to our solicitors on moving day.

When the funds arrive, the home will be officially yours. You can collect the keys and the deeds will be sent to your solicitor. Then, all that's left to do is move in!



## Aftercare

After completion, your Customer Liaison Manager will be in touch to support you with your new home!

They'll be able to provide you with contact details for your Warranty Providers and answer any questions you may have.



## Time to enjoy your new home

You'll then settle in, and love life in your beautiful new Avant home.





# Why buy new?

If you're looking for a stunning new home you've come to the right place. Here's our top reasons why buying new is best...

## Highly energy efficient

Buying a new build home has many benefits when it comes to saving energy – and money. They are built to the very latest energy efficiency standards with research by the Home Builders Federation (HBF) finding that owners of a new build home can save up to a staggering £2,200\* a year on their energy bills.

## No renovation costs

With a new Avant home there's no hidden history to contend with. You won't uncover that you need a full re-wire or that your boilers on the brink, because everything in your home is... you guessed it... new!

## Peace of mind as standard with a 10 year warranty

With a new Avant home, you'll receive a two-year builder warranty, plus a further eight years warranty from the NHBC or Premier Guarantee. In the unlikely event that something goes wrong with your home, your warranty ensures you're protected.

## A beautiful blank canvas

One of the most exciting things about buying new is that you're starting from scratch in an immaculate unlived-in interior. Plus, with no one ever having lived in your home before, you're the first to make memories in the space.







## Perfectly personalisable

When buying new, you can choose from our extensive range of stunning options and upgrades allowing you to personalise all rooms of your home and garden.

## Buying schemes to help you move

When you buy a new home, you unlock access to lots of helpful buying schemes. From Part Exchange to My Move Made Easy, plus our Key Worker and Military Discount schemes, we have plenty of ways to get you moving that you wouldn't benefit from when buying second-hand.

## No upward chain

When you've got your heart set on a home, the last thing you want to contend with is chains and endless delays. When you buy new, there's no upward chain!

## Protecting the planet

New homes produce less carbon as they need to use less energy to heat up. Around 84%\* of new homes have an EPC rating of A-B, while only 4%\* of existing properties achieved the same rating. Good insulation, double/triple glazing and airtight windows all contribute to a reduction carbon emission by 6%\*.

\*HBF Watt a Save Report, February 2023.

\*\* Dependant on build stage, please ask your Sales Advisor for more details.

\*\*\*Terms and conditions apply.

# Living in Keighley, Bradford

Bradford has something for everyone, with a flourishing food and drink scene, and plenty of amenities on your doorstep. Keighley is the second largest settlement in Bradford, and the town is known for its beautiful countryside and walking trails, and East Riddleston Hall which overlooks the river Aire.

In Keighley, much of the local town centre is pedestrianised. Here you will find several large supermarket chains including Morrisons, Sainsbury's and Asda, as well as a few smaller independent stores. The town also boasts Airedale Shopping Centre, which is home to lots of large retailers including Boots, Clintons, Next, New Look and much more.

For dining out, Keighley has plenty of options close by, including Emporio Italia, The Hawthorn Haworth and the Michelin starred Restaurant at Shibden Mill Inn.





Keighley also has a good selection of pubs in the town and surrounding villages. With several microbreweries and the Timothy Taylor brewery based in the Keighley area, many offer a high standard of real ales. Events held on an annual basis in and around Keighley include the The Keighley Gala, the The Keighley and District Agricultural Show, and the Worth Valley Beer and Music Festival.

For arts and theatre lovers, Bradford regularly hosts local film festivals as a homage to the city's historic roots within the film industry. The theatre also offers both casual and luxury dining options if you want to make a day of it!

Keighley has plenty of options for school-age children; for primary schools, select from Victoria Primary School, Holycroft Primary School, Keighley St Andrew's C Of E Primary School, and Worth Valley Primary School. For secondary schools, there's the choice of Carlton Keighley Academy, Holy Family Catholic School, South Craven School, and Bingley Grammar School nearby.

Keighley is also known for its excellent STEM (Science, Technology, Engineering, and Mathematics) facilities, housing Keighley College – an offshoot of the reputable Leeds College. Featuring, amongst other state-of-the-art facilities, a mock mission control area and a planetarium, Keighley College is training the country's next generation of scientists and academics that will carry the UK into the future.



# Development plan

**THE MALTBY**  
3 bedroom home



**THE LEYBURN**  
3 bedroom home



**THE OAKWOOD**  
3 bedroom home



**THE SALBURY**  
3+ bedroom home



**THE NETHERTON**  
4 bedroom home



**THE HORBURY**  
4 bedroom home



**THE THORESBY**  
4+ bedroom home



▶ Garage Access

■ Bin Storage Area

+ denotes additional lifestyle room to upper floor

Plan not to scale.

For plot & public open space planting see detailed landscaping plan.







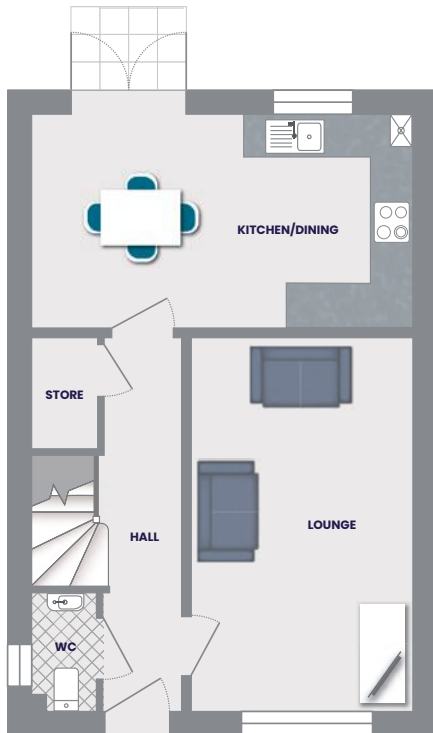
# The Maltby



3 Bedroom

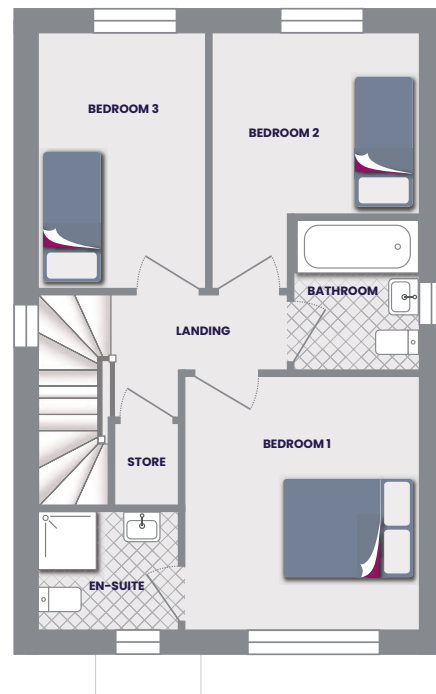


2 Bathroom



## Ground Floor

Kitchen/Dining	5.31m x 2.97m	17' 5" x 9' 8"
Lounge	3.07m x 5.18m	10' 0" x 16' 11"
Hall	1.07m x 5.18m	3' 6" x 16' 11"
WC	0.92m x 1.65m	3' 0" x 5' 4"
Store	0.93m x 1.52m	3' 0" x 4' 11"



## First Floor

Bedroom 1	3.25m x 3.52m	10' 7" x 11' 6"
En-Suite 1	1.96m x 1.66m	6' 5" x 5' 5"
Bedroom 2	2.88m x 3.55m*	9' 5" x 11' 7"*
Bedroom 3	2.33m x 3.55m	7' 7" x 11' 7"
Bathroom	1.7m x 2.08m	5' 6" x 6' 9"
Store	0.86m x 1.23m	2' 9" x 4' 0"

\* Maximum dimension  
\*\* Minimum dimension



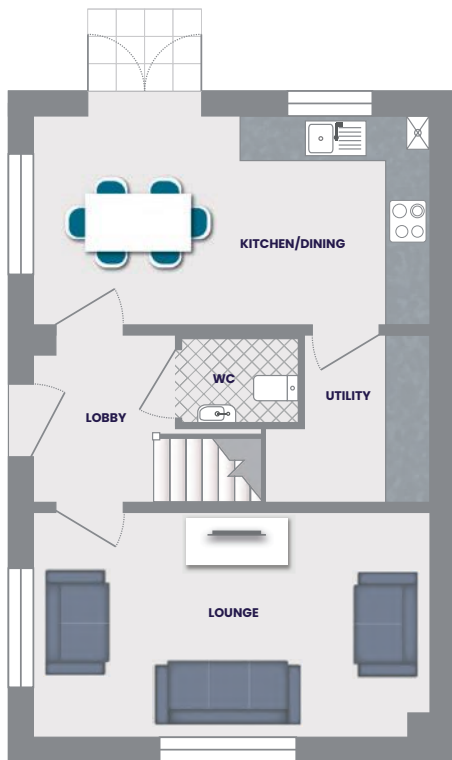
# The Leyburn



3 Bedroom

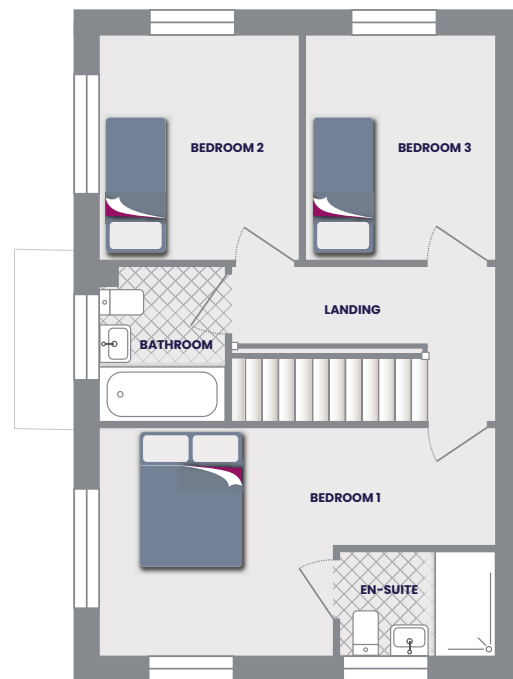


2 Bathroom



## Ground Floor

Kitchen/Dining	5.31m x 2.79m	17' 5" x 9' 1"
Utility	1.69m x 2.21m	5' 6" x 7' 3"
Lounge	5.31m x 3m	17' 5" x 9' 10"
Lobby	1.89m x 2.21m	6' 2" x 7' 3"
WC	1.55m x 1.15m	5' 1" x 3' 9"



## First Floor

Bedroom 1	5.3m* x 3.06m	17' 4"* x 10' 0"
En-Suite 1	2.09m x 1.4m	6' 10" x 4' 7"
Bedroom 2	2.72m x 2.98m	8' 11" x 9' 9"
Bedroom 3	2.5m x 2.98m	8' 2" x 9' 9"
Bathroom	1.7m x 2.07m	5' 6" x 6' 9"

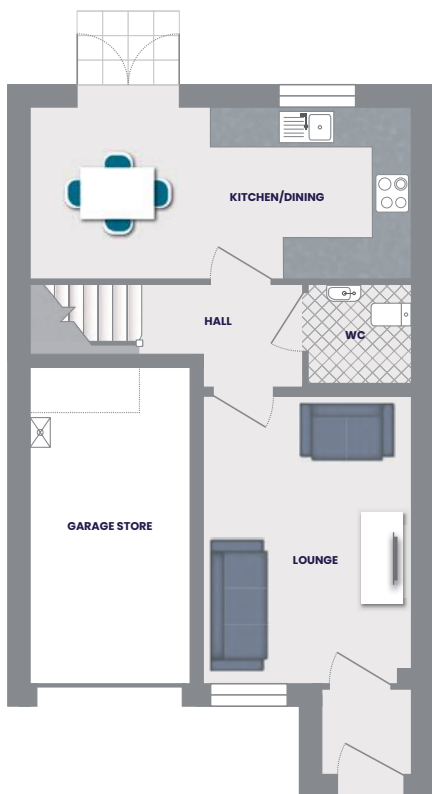
# The Oakwood



3 Bedroom

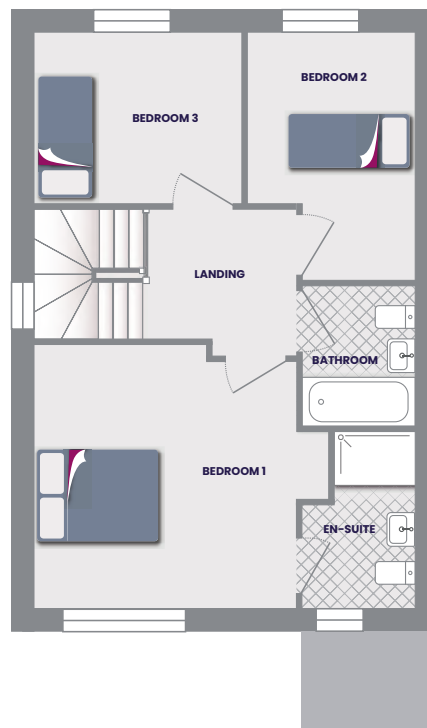


2 Bathroom



## Ground Floor

Lobby	1.34m x 1.25m	4' 4" x 4' 1"
Kitchen/Dining	5.69m x 2.55m	18' 8" x 8' 4"
Lounge	3.09m x 4.27m	10' 1" x 14' 0"
Hall	2.22m x 1.51m	7' 3" x 4' 11"
WC	1.71m x 1.51m	5' 7" x 4' 11"
Garage	2.4m x 4.67m	7' 10" x 15' 3"



## First Floor

Bedroom 1	3.91m x 3.92m*	12' 9" x 12' 10"*
En-Suite 1	1.69m x 2.53m	5' 6" x 8' 3"
Bedroom 2	2.49m* x 3.69m	8' 2"* x 12' 1"
Bedroom 3	3.1m x 2.55m	10' 2" x 8' 4"
Bathroom	1.71m x 2.17m	5' 7" x 7' 1"



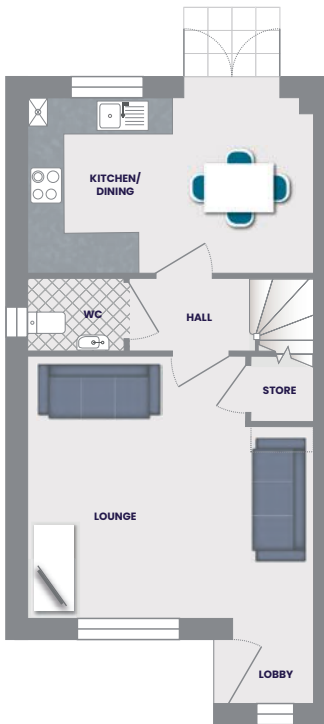
# The Salisbury



3+ Bedroom



3 Bathroom



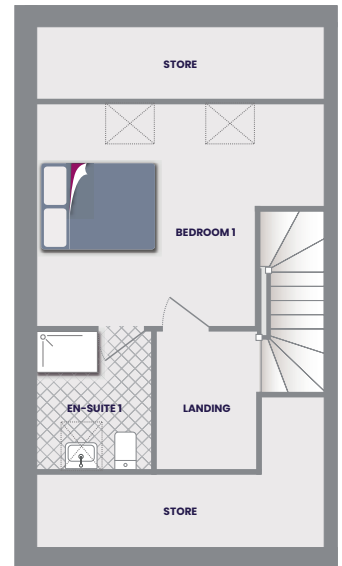
## Ground Floor

Lobby	1.28m x 1.36m	4' 2" x 4' 5"
Kitchen/Dining	4.57m x 2.76m	14' 11" x 9' 0"
Lounge	4.57m* x 4.09m	14' 11"* x 13' 5"
Hall	1.9m x 1.15m	6' 2" x 3' 9"
WC	1.55m x 1.15m	5' 1" x 3' 9"
Store	1.01m x 1.02m	3' 3" x 3' 4"



## First Floor

Bedroom 2	3.30m** x 2.77m**	10' 9"** x 9' 1"**
En-Suite 1	1.17m x 2.76m*	3' 10" x 9' 0"*
Bedroom 3	2.61m x 3.13m*	8' 6" x 10' 3"*
Live/Work	1.86m x 2.36m	6' 1" x 7' 8"
Bathroom	1.7m x 2.15m	5' 6" x 7' 0"



## Second Floor

Bedroom 1	3.47m x 3.5m	11' 4" x 11' 5"
En-Suite 1	1.86m x 2.17m	6' 1" x 7' 1"

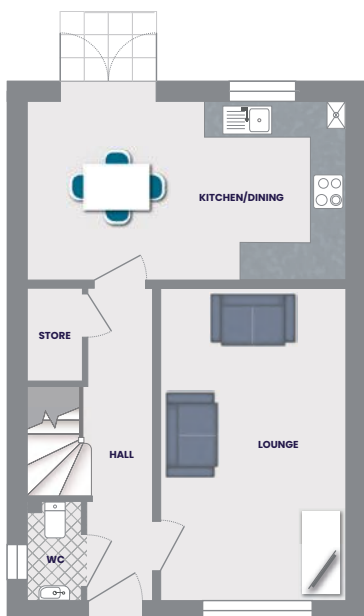
# The Netherton



4 Bedroom

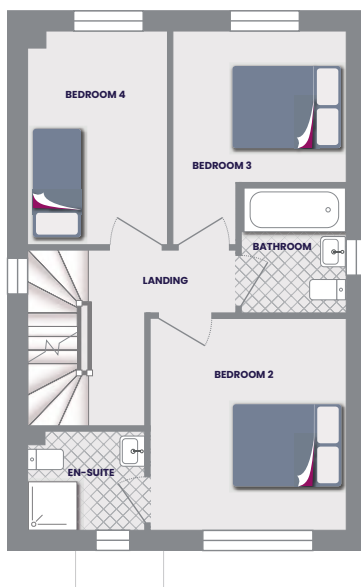


3 Bathroom



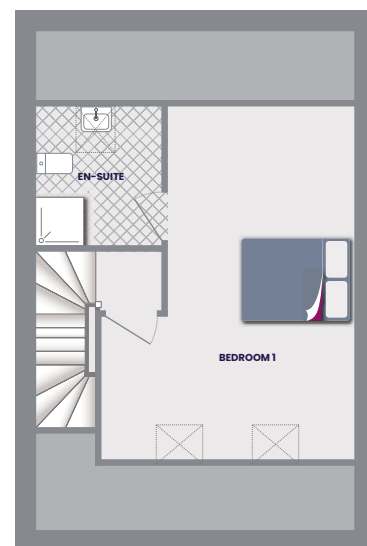
## Ground Floor

Kitchen/Dining	5.31m x 2.97m	17' 5" x 9' 8"
Lounge	3.07m x 5.18m	10' 0" x 16' 11"
Hall	1.07m x 5.18m	3' 6" x 16' 11"
WC	0.92m x 1.65m	3' 0" x 5' 4"
Store	0.93m x 1.52m	3' 0" x 4' 11"



## First Floor

Bedroom 1	3.25m x 3.52m	10' 7" x 11' 6"
En-Suite 1	1.96m x 1.66m	6' 5" x 5' 5"
Bedroom 2	2.88m x 3.55m*	9' 5" x 11' 7"*
Bedroom 3	2.33m x 3.55m	7' 7" x 11' 7"
Bathroom	1.7m x 2.08m	5' 6" x 6' 9"
Store	0.86m x 1.23m	2' 9" x 4' 0"



## Second Floor

Bedroom 1	3.09m** x 5.89m*	10' 1"*** x 19' 3"*
En-Suite	2.12m x 2.34m	6' 11" x 7' 8"

\* Maximum dimension

\*\* Minimum dimension



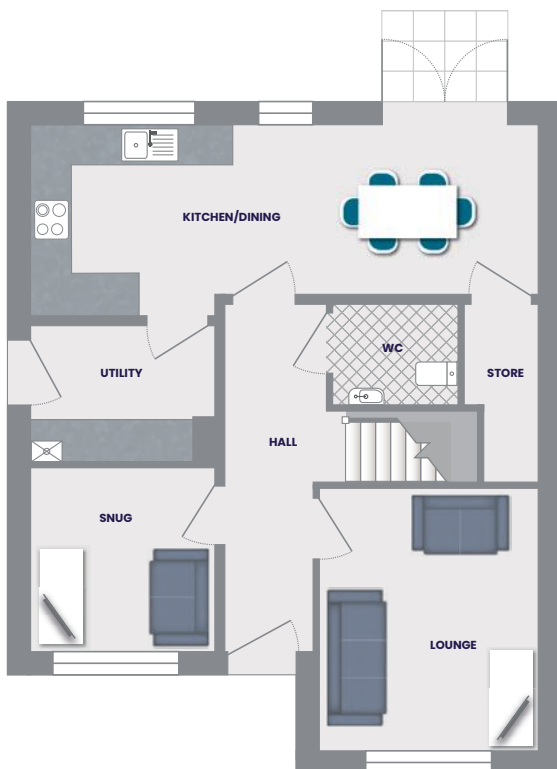
# The Horbury



4 Bedroom

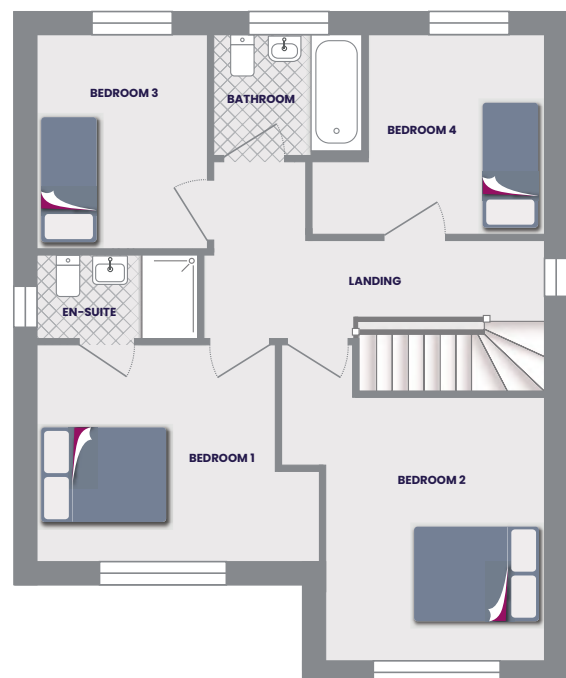


2 Bathroom



## Ground Floor

Kitchen/Dining	7.32m x 2.45m**	24' 0" x 8' 0"***
Utility	2.66m x 1.97m	8' 8" x 6' 5"
Lounge	3.15m x 3.73m	10' 4" x 12' 2"
Snug	2.66m x 2.62m	8' 8" x 8' 7"
Hall	1.26m x 4.99m	4' 1" x 16' 4"
WC	1.8m x 1.45m	5' 10" x 4' 9"
Store	1.07m x 2.55m	3' 6" x 8' 4"



## First Floor

Bedroom 1	3.41m** x 3.1m	11' 2"*** x 10' 2"
En-Suite 1	2.3m x 1.21m	7' 6" x 3' 11"
Bedroom 2	3.15m** x 3.73m	10' 4"*** x 12' 2"
Bedroom 3	2.43m x 3.09m	7' 11" x 10' 1"
Bedroom 4	2.53m** x 3.08m	8' 3"*** x 10' 1"
Bathroom	2.17m x 1.7m	7' 1" x 5' 6"

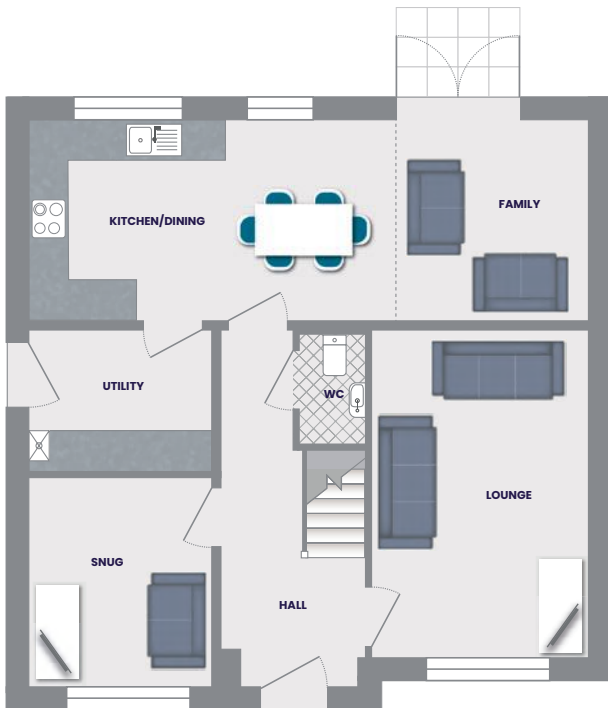
# The Thoresby



4+ Bedroom

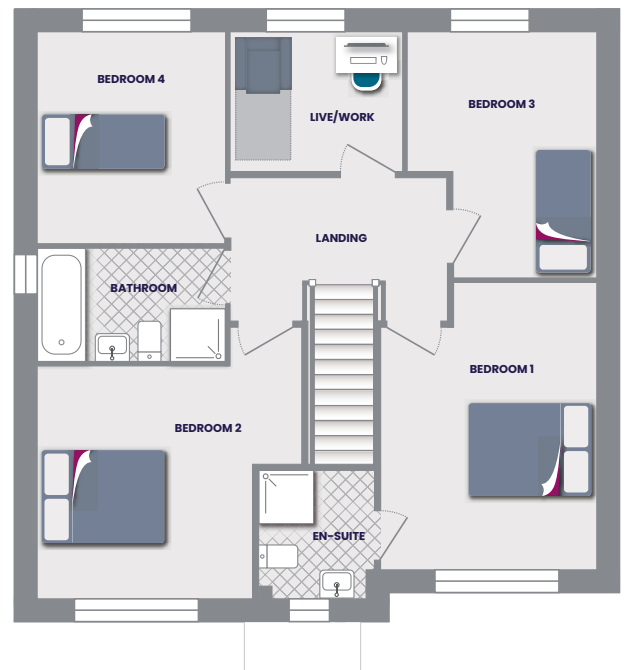


2 Bathroom



## Ground Floor

Kitchen/Dining/Family	8.22m x 2.96m	26' 11" x 9' 8"
Utility	2.69m x 2.06m	8' 9" x 6' 9"
Lounge	3.18m x 4.76m	10' 5" x 15' 7"
Snug	2.69m x 3.07m	8' 9" x 10' 0"
Hall	2.11m x 5.21m	6' 11" x 17' 1"
WC	0.98m x 1.65m	3' 2" x 5' 4"



## First Floor

Bedroom 1	3.18m* x 4.18m*	10' 5"* x 13' 8"*
En-Suite 1	1.6m x 1.89m	5' 2" x 6' 2"
Bedroom 2	3.24m** x 3.24m**	10' 7"** x 10' 7"**
Bedroom 3	2.77m* x 3.59m*	9' 1"* x 11' 9"*
Bedroom 4	2.76m x 3.19m	9' 0" x 10' 5"
Live/Work	2.5m x 2.06m	8' 2" x 6' 9"
Bathroom	2.76m x 1.7m	9' 0" x 5' 6"

\* Maximum dimension  
\*\* Minimum dimension





# Specification

## Internal features

- Stylish white internal doors with chrome finished door handles
- Ceilings and walls finished in white emulsion throughout
- Heat, smoke and Carbon Monoxide detectors
- Gas central heating radiators throughout and grade A energy efficient boiler
- Power sockets and energy efficient lighting as per electrical layout drawings
- Modern profile skirting and architrave

## External features

- UPVC french door to access rear garden
- Low maintenance black UPVC fascia
- UPVC windows with locking system
- Front composite GRP door with sidelight\* and multi-point locking system
- Driveway\*
- Garage\* including power and lights
- Allocated parking\*
- Front entrance light
- Rotavated rear gardens
- Turf to front gardens where applicable
- Photovoltaic panels~^
- Electric vehicle charging point^

## Main bedroom features

- Ensuite shower room^

\*Sidelight, Allocated Parking, Garage, and Driveway for these housetypes is Plot Specific.

~ Panel location and amount subject to plot location and orientation

^ Dependent on housetype





## Bathroom features

- White contemporary sanitaryware
- Bath with mixer tap
- Full height tiling option to 3 sides of bath and half height tiling behind sink and WC
- Quality designer taps and fittings

## Shower room features

- White contemporary sanitaryware
- High quality shower enclosure with white shower tray and a glass door with chrome trim
- Full height tiling option to 3 sides of shower and half height tiling behind sink and WC
- Quality designer taps and fittings
- Electric shower to second en-suite in selected housetypes

## WC features

- Ground floor WC with stylish white sanitaryware
- Single tile splash course above the sink
- Quality designer taps and fittings

Ask your Sales Advisor about our Options and Upgrades!

## Kitchen features

- Fully fitted designer kitchen in a range of colours and styles
- Stainless steel fan oven
- Ceramic hob
- Integrated fridge/freezer or undercounter fridge with icebox^
- Stainless steel bowl and drainer
- Designer chrome mixer taps
- White finish sockets above worktops
- Stainless steel extractor hood
- Stainless steel splash back behind the hob



# Electrical provisions

All electrical installations including sockets are provided in accordance with relevant building regulations to a minimum requirement shown below.

You can tailor the placement and number of outlets in your property upon request.

Speak to your Sales Advisor for more details.

Housetype	Hall	Lounge	Kitchen/Dining	Utility	WC	Snug	Bedroom 1	Bedroom 2	Bedroom 3
Appleton	2	6	12 + 4 appliances	4 + 2 appliances	-	4	6	4	4
Askham	2	6	8 + 5 appliances	n/a	-	n/a	6	n/a	n/a
Baildon	2	6	8 + 5 appliances	n/a	-	n/a	6	4	4
Bilbury	2	4	10 + 5 appliances	n/a	-	n/a	6	4	4
Cadeby A	2	6	8 + 5 appliances	n/a	-	n/a	6	4	4
Cadeby B	2	6	8 + 5 appliances	4 + 1 appliance	-	n/a	6	4	4
Cookbury	2	6	10 + 5 appliances	n/a	-	n/a	6	4	4
Coverham	2	6	14 + 4 appliances	4 + 2 appliances	-	n/a	6		4
Dalton A	2	6	8 + 5 appliances	n/a	-	n/a	6	4	4
Dalton B	2	6	8 + 5 appliances	4 + 1 appliance	-	n/a	6	4	4
Darwood	2	6	12 + 4 appliances	4 + 2 appliances	-	n/a	6	4	4
Denbrough	2	4	6 + 5 appliances	n/a	-	n/a	6	n/a	n/a
Eastbeck	2	4	6 + 5 appliances	n/a	-	n/a	6	4	n/a
Ferndale	2	6	8 + 5 appliances	n/a	-	n/a	6	4	n/a
Horbeck	2	6	8 + 4 appliances	4 + 2 appliances	-	4	6	4	4
Howesby	2	4	6 + 5 appliances	n/a	-	n/a	6	4	n/a
Levisham	2	6	8 + 5 appliances	n/a	-	n/a	6	4	n/a
Leyburn	2	6	8 + 4 appliances	4 + 2 appliances	-	n/a	6	4	4
Maltby	2	6	8 + 5 appliances	n/a	-	n/a	6	4	4
Mowbray	2	4	8 + 4 appliances	n/a	-	n/a	6	n/a	n/a
Netherton	2	6	8 + 5 appliances	n/a	-	n/a	6	4	4
Oakdale	-	6	8 + 5 appliances	n/a	-	n/a	6	4	n/a
Ripley	2	6	8 + 5 appliances	n/a	-	n/a	6	4	n/a
Salbury	2	6	8 + 5 appliances	n/a	-	n/a	6	4	4
Thirsk	2	4	6 + 5 appliances	n/a	-	n/a	6	4	n/a
Thoresby	2	6	10 + 4 appliances	4 + 2 appliances	-	2	6	4	4
Walbrough	-	6	8 + 5 appliances	n/a	-	n/a	6	4	4
Wentbury	2	6	8 + 5 appliances	n/a	-	n/a	6	4	4



- no electrical sockets in this room  
n/a this room is not part of this housetype  
wc Downstairs Toilet  
FF First Floor  
SF Second Floor

Bedroom 4	Bedroom 5	Bathroom	Ensuite 1	Ensuite 2	FF Landing	SF Landing	Live/work	Garage
4	4	-	-	-	2	n/a	n/a	n/a
n/a	n/a	-	n/a	n/a	2	n/a	4	n/a
n/a	n/a	-	n/a	n/a	2	n/a	n/a	n/a
4	n/a	-	-	n/a	2	n/a	4	2
n/a	n/a	-	-	n/a	2	n/a	n/a	n/a
n/a	n/a	-	-	n/a	2	n/a	n/a	n/a
4	n/a	-	-	n/a	2	n/a	4	n/a
4	4	-	-	-	2	n/a	n/a	2
4	n/a	-	-	-	2	2	n/a	n/a
4	n/a	-	-	-	2	2	n/a	n/a
4	n/a	-	-	n/a	2	n/a	4	2
n/a	n/a	-	n/a	n/a	2	n/a	4	n/a
n/a	n/a	-	n/a	n/a	2	2	4	n/a
n/a	n/a	-	-	n/a	2	n/a	4	n/a
n/a	n/a	-	n/a	n/a	2	2	4	n/a
n/a	n/a	-	n/a	n/a	-	n/a	n/a	n/a
n/a	n/a	-	-	n/a	2	n/a	n/a	n/a
n/a	n/a	-	-	n/a	2	n/a	n/a	n/a
n/a	n/a	-	n/a	n/a	n/a	n/a	n/a	n/a
4	n/a	-	-	-	2	2	n/a	n/a
n/a	n/a	-	-	n/a	2	n/a	4	n/a
n/a	n/a	-	-	n/a	2	n/a	n/a	n/a
n/a	n/a	-	-	-	2	2	4	n/a
n/a	n/a	-	n/a	n/a	2	n/a	n/a	n/a
4	n/a	-	-	n/a	2	n/a	4	n/a
4	n/a	-	-	-	2	2	4	2
n/a	n/a	-	-	n/a	2	n/a	4	2



# Mortgage advisor panel

We're proud to work with a carefully selected panel of advisors that work separately from any bank or lender. These firms are available to provide free independent financial advice and will help you find a mortgage product that suits your circumstances.

Specialising in mortgages for new homes, these companies fully understand the processes and details of buying a new build, ensuring you're getting experienced and knowledgeable support. For more information, please contact one of our recommended advisors below.

## **JAMES LEIGHTON FINANCIAL SERVICES**

Phone: 0115 8709520 | Email: [enquiries@jlfs.co.uk](mailto:enquiries@jlfs.co.uk)  
Website: [www.jlfs.co.uk](http://www.jlfs.co.uk)

## **SAFEGUARD FINANCIAL SERVICES LTD**

Phone: 0191 500 8740 | Email: [advice@safegfs.co.uk](mailto:advice@safegfs.co.uk)  
Website: [www.safeguardfinancialservices.co.uk](http://www.safeguardfinancialservices.co.uk)



# Solicitor panel

We have a carefully selected panel of recommended independent firms that can help you on your journey. These Solicitors are specialists in new build conveyancing and fully understand the nuances of financial and legal matters, giving you confidence in their ability to help you with your purchase. For more information please contact one of the firms below.

## **EMSLEYS**

Phone: 0113 264 4414 | Email: [emma.milner@emsleys.co.uk](mailto:emma.milner@emsleys.co.uk)  
Website: [www.emsleys.co.uk](http://www.emsleys.co.uk)

## **G M WILSON**

Phone: 01924 291111 | Email: [lisa@gmwilson.co.uk](mailto:lisa@gmwilson.co.uk)  
Website: [www.gmwilson.co.uk](http://www.gmwilson.co.uk)

## **CARTER'S SOLICITORS**

Phone: 01977 703 224 | Email: [info@carterssolicitors.co.uk](mailto:info@carterssolicitors.co.uk)  
Website: [www.carterssolicitors.co.uk](http://www.carterssolicitors.co.uk)

## **PLS**

Phone: 0330 024 4536 | Email: [newbusinessteam@pls-solicitors.co.uk](mailto:newbusinessteam@pls-solicitors.co.uk)  
Website: [www.pls-solicitors.co.uk](http://www.pls-solicitors.co.uk)



PLEASE NOTE: Avant Homes can not offer legal or financial advice. Our Panel professionals are entirely independent – Avant Homes receives no incentive for recommending them. There is no obligation to select from our Panel, but you are advised to seek financial and legal guidance when buying a new home.

# AVANT

Quality homes, for everyone.

## Odette's Point

Keighley, Bradford  
BD20 6DY

T: 01202 113617

E: [odettespoint.sales@avanthomes.co.uk](mailto:odettespoint.sales@avanthomes.co.uk)

[www.avanthomes.co.uk/odettespoint](http://www.avanthomes.co.uk/odettespoint)



Avant Homes 2024  
Version 1.0.0

The information contained herein is for general guidance only. Photographs portray a reasonable impression of the properties we build and sell, but some images and show homes may include upgrades or options that have since been discontinued or do not form part of a standard specification. Changes in circumstances or availability of materials may force us to make changes to finishes or elevations from those illustrated. Floor plans demonstrate the general layout of the property and room dimensions are duplicated from working drawings but these are not precise measurements to be relied upon as slight variances will occur on construction of individual properties. Site plans show the intended layout of the development, but we reserve the right to alter layouts subject to appropriate planning consents. Avant Homes cannot offer you financial or legal advice. Please speak to an independent IFA or Solicitor for financial and legal guidance when buying a new home