



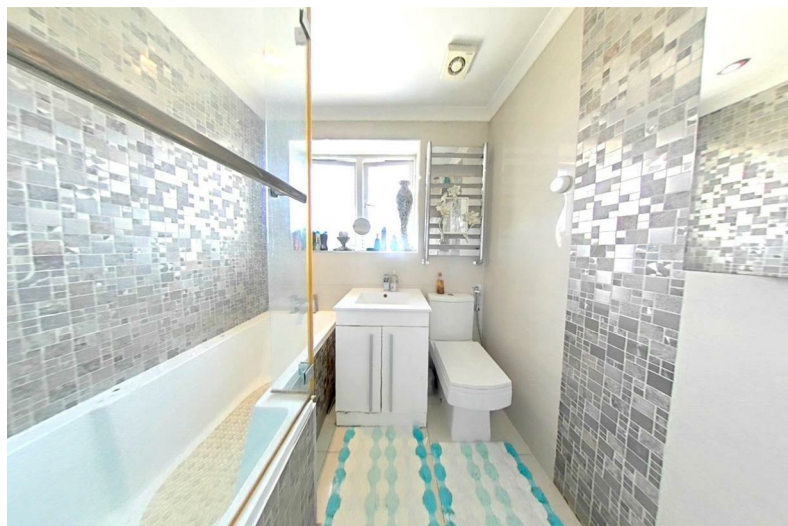
Pearl Gardens

Slough SL1

Guide Price £575,000

4 4 3 C

Pearl Gardens Slough SL1



Summary Description

OPEN HOUSE Saturday 16th September, Book now! Guide Price £575,000 - £600,000. A well presented Four Bedroom Two storey Side Extended Family Home. En-suite to Bedroom One. Lounge, Kitchen, Conservatory, Cloakroom, Utility room/ Kitchenette, leading to further reception (currently used as a Studio with shower room, Low maintenance rear garden, ample driveway parking. Double Glazing & Gas Central Heating. Conveniently located close to Slough, M4/A4/M40/M25 access, Local shops within 5 Min walk 0.3 Mile.

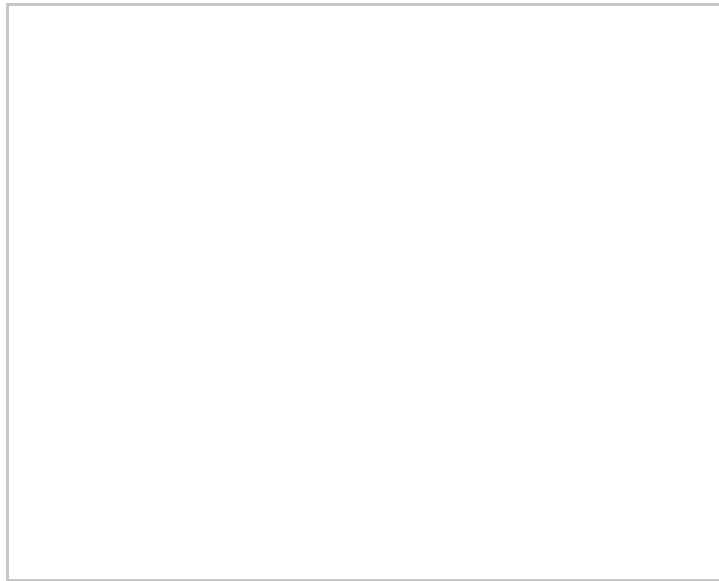
4 Bedroom Family Home
En-suite to Bedroom One
Cloak/ Shower room
Further reception used as studio
Ample Driveway Parking

Extended Semi Detached
Conservatory
Utility/ Kitchenette
Further Shower Room
Low Maintenance Rear Garden





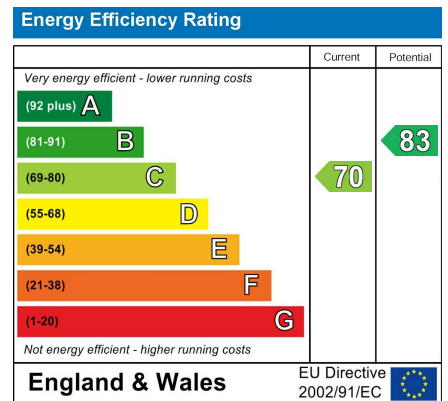
Floor Plan



Area Map



Energy Efficiency Graph



Council Tax Band: D

Viewing

Please contact our Burnham Office on 01753 255 755 if you wish to arrange a viewing appointment for this property or require further information.

These particulars, whilst believed to be accurate are set out as a general outline only for guidance and do not constitute any part of an offer or contract. Intending purchasers should not rely on them as statements of representation of fact, but must satisfy themselves by inspection or otherwise as to their accuracy. No person in this firm's employment has the authority to make or give any representation or warranty in respect of the property.