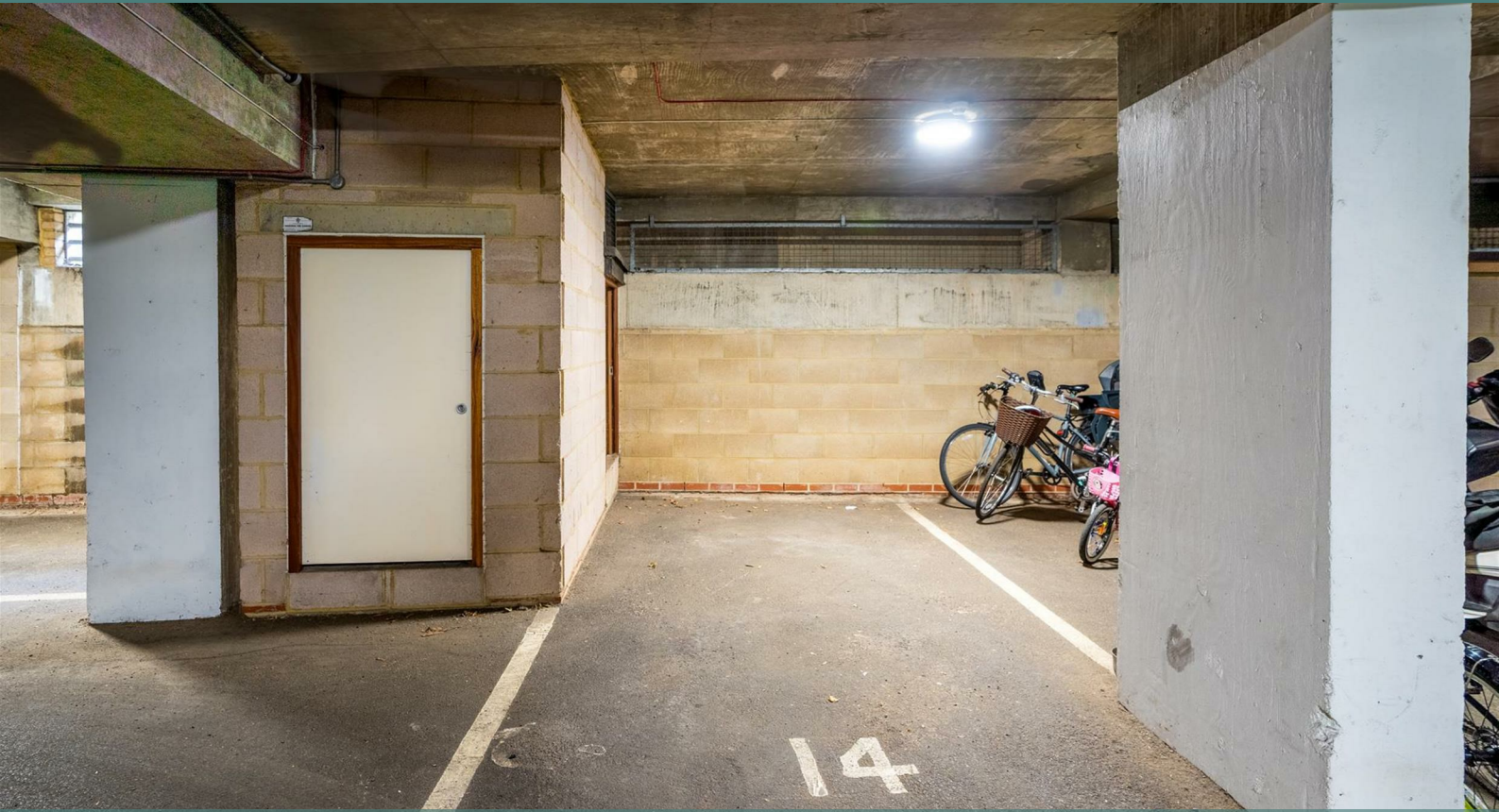




ISLINGTON PROPERTIES



69, Graham Street Angel, N1 Offers In Excess Of £35,000 Leasehold

Secure, underground parking space that is part of a development situated close to City Road, offering good access to Old Street and Angel. Available immediately.

- Secure location
- Private use of a lockable cupboard
- Close to public transport connections
- Easy commute to the City
- Central location

Viewing

Please contact our Upper Street Office on 020 7871 4444 if you wish to arrange a viewing appointment for this property or require further information.

Additional information

Tenure: Leasehold

Lease Term: 975 Years

Date of Lease Commencement: 2001

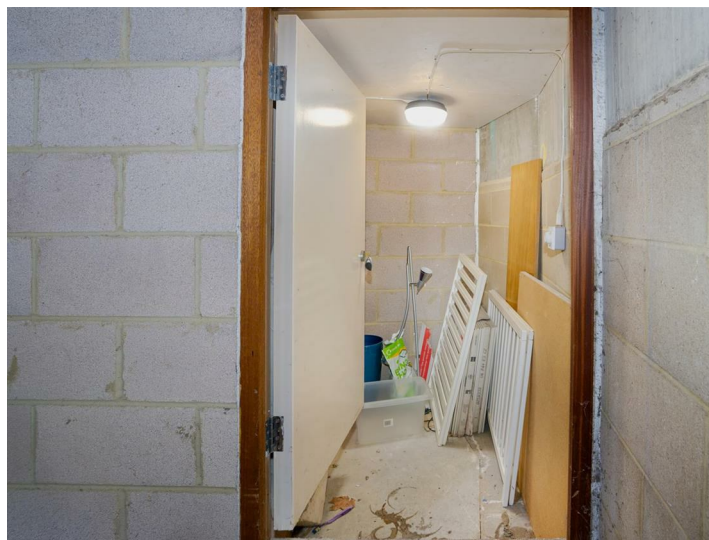
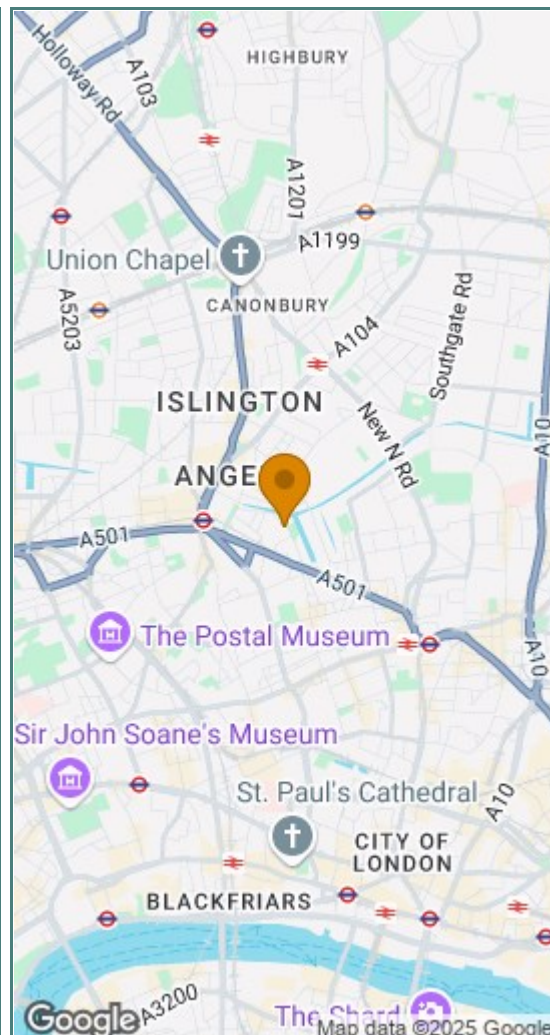
Service Charge: £165.22 per year

Ground Rent: £150 per year

Floor Plan



Area Map



These particulars, whilst believed to be accurate are set out as a general outline only for guidance and do not constitute any part of an offer or contract. Intending purchasers should not rely on them as statements of representation of fact, but must satisfy themselves by inspection or otherwise as to their accuracy. No person in this firm's employment has the authority to make or give any representation or warranty in respect of the property. Council Tax and, where applicable, lease information, service charges and ground rent are given as a guide only and should always be checked and confirmed by your solicitor prior to exchange of contracts.