



St. Peter's Street

Islington, N1

£550,000

Leasehold

Superbly presented second and third floor apartment located in this development close to all the amenities of Angel. The flat enjoys excellent light and features well balanced accommodation over two floors, and benefits from a modern kitchen and bathroom. St Peters Street is well situated for all the boutique shops and eateries of Upper Street, with the open spaces of Colebrooke Row Gardens and the elegant charm of Regents canal easily accessible. Angel station (Northern line) is within ten minutes walk and local buses on City Road/Upper street/Essex Road are close by.

- Offered chain free
- Lift access
- Central location
- Close to Regents Canal
- Separate WC
- Private balcony
- Superb transport links
- Council Tax: C

Viewing

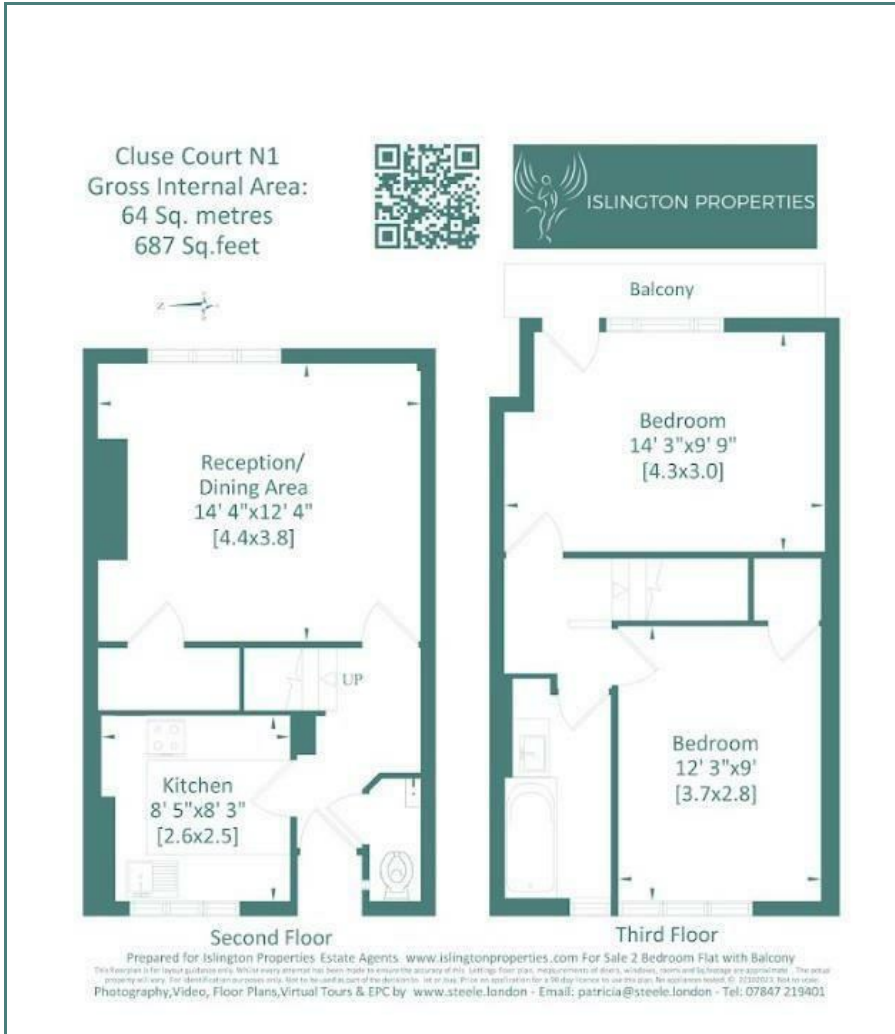
Please contact our Upper Street Office on 020 7871 4444 if you wish to arrange a viewing appointment for this property or require further information.



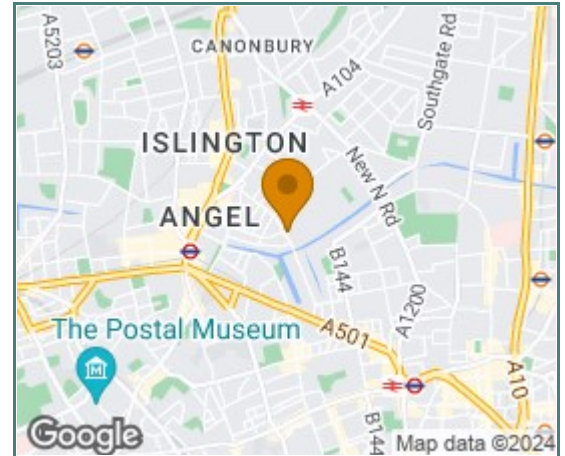
Additional Information

Lease Term: 90 years
 Service Charge: £2,400
 Service Charge Review Period: Annually
 Ground Rent: £10 per year
 Heating: Gas Central Heating
 Electricity: Mains
 Water: Mains
 Sewerage: Mains
 Broadband: Standard, Superfast & Ultrafast (Ofcom)
 Mobile Signal/Coverage: Good for EE, Three, O2 & Vodafone (Ofcom)
 Parking: Street Parking Permit from the council

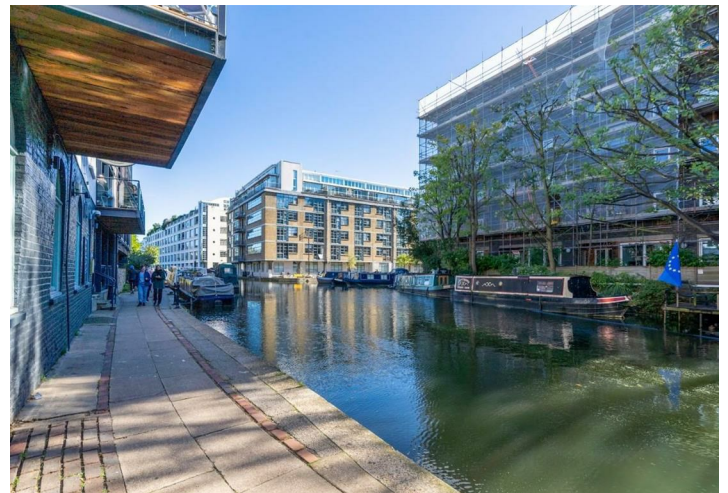
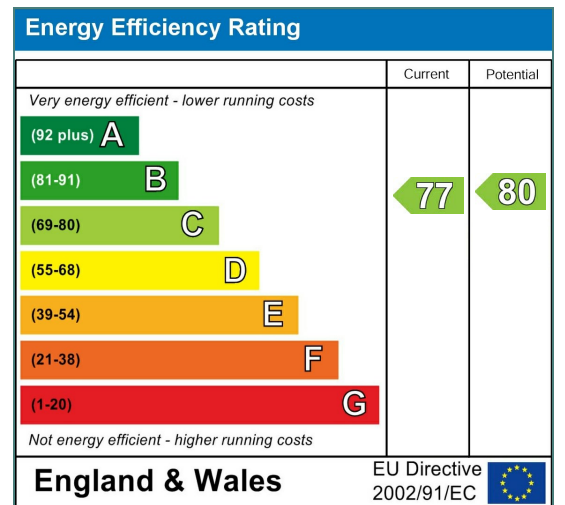
Floor Plan



Area Map



Energy Efficiency Graph



These particulars, whilst believed to be accurate are set out as a general outline only for guidance and do not constitute any part of an offer or contract. Intending purchasers should not rely on them as statements of representation of fact, but must satisfy themselves by inspection or otherwise as to their accuracy. No person in this firm's employment has the authority to make or give any representation or warranty in respect of the property. Council Tax and, where applicable, lease information, service charges and ground rent are given as a guide only and should always be checked and confirmed by your solicitor prior to exchange of contracts.