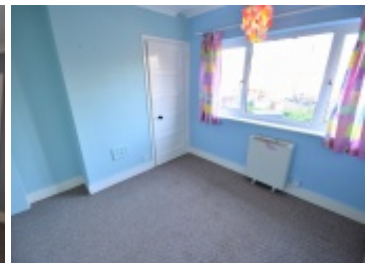
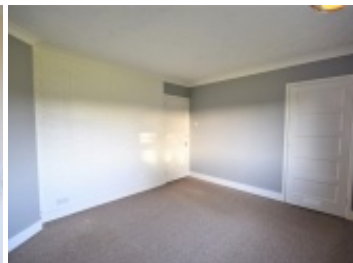


Farnborough Road, Watton, Thetford



2 beds 1 bath 1 living

£595 pcm



Key Features

- Located Within Private Estate
- 2 Bedrooms
- Perfect First Time Home
- Generous Low Maintenance Garden
- Wonderful View to Open Green
- Close To Bus Stop And Local Amenities

Energy Efficiency Rating		Current	Potential
Very energy efficient - lower running costs			
(92-100)	A		90
(81-91)	B		
(69-80)	C		
(55-68)	D	58	
(39-54)	E		
(21-38)	F		
(1-20)	G		
Not energy efficient - higher running costs			
England, Scotland & Wales		EU Directive 2002/91/EC	

Full Description



A deceptively spacious two bedroom terrace house located on the outskirts of Watton. The property is nearby local schools and within easy commuting distance from the nearby town centre and associated amenities. The property benefits from being situated off the main road and overlooks a lovely open green to the front. The accommodation comprises a generously sized kitchen with a range of modern units with chrome accessories and tiled flooring. A lounge profiting from ample natural light and views upon the green. Upstairs situates two well-proportioned bedrooms and 3-piece bathroom suite. The rear garden is enclosed and a combination of patio/shingle. The property has economy 7 storage heating and off-road parking nearby.

****Advertisement awaiting landlord approval****

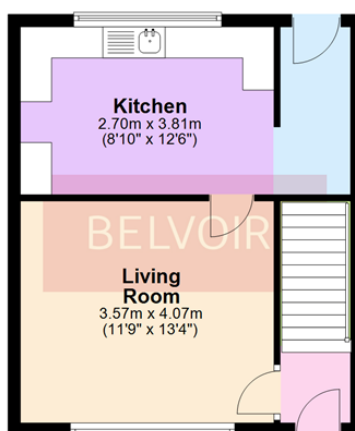
We endeavour to make property particulars accurate and reliable, however, they do not constitute or form part of any contract and none is to be relied upon as statements of representation or fact. Any service, systems and appliances listed in this specification have not been tested by us and no guarantee as to their operating ability or efficiency is given. All measurements have been taken as a guide and are not precise. If you require clarification or further information on any points, please contact us, especially if you are travelling some distance to view.

Farnborough Road, Watton, Thetford



Ground Floor

Approx. 32.8 sq. metres (353.2 sq. feet)



Total area: approx. 66.9 sq. metres (720.5 sq. feet)

Whilst every attempt has been made to ensure the accuracy of the floor plan contained here, measurements of doors, windows, rooms and any other items are approximate and no responsibility is taken for any error, omission or misstatement. This is for illustrative purposes only and should be used as such.
Plan produced using PlanUp.

First Floor

Approx. 34.1 sq. metres (367.3 sq. feet)

