



Cherry Tree Mews, Swadlincote,



Guide price £160,000



Key Features

- Smart Starter Home
- Two Bedrooms
- Modern Town House
- Kitchen / Diner
- Off Road Parking
- Private Rear Garden
- EPC rating C
- Freehold





Overview A modern semi detached house, this property has double glazing and gas central heating throughout. To the front the door leads to a lounge, with a gas fire and stairs off. A further door opens to the dining kitchen - which has a range of wall and base units, integrated ceramic hob and electric oven, and appliance spaces. A door from here leads to the rear garden. To the first floor, the master bedroom is a double located to the front of the house, bedroom two is a good sized single with an over stairs cupboard, overlooking the rear. The bathroom concludes the accommodation and has a bath with electric shower, a wash basin and WC.

Lounge 4.72m x 3.33m (15'6" x 10'11")

Dining Kitchen 3.28m x 3.33m (10'10" x 10'11")

Master Bedroom 3.00m x 3.33m (9'10" x 10'11")

Bedroom Two 3.38m x 1.75m (11'1" x 5'8")

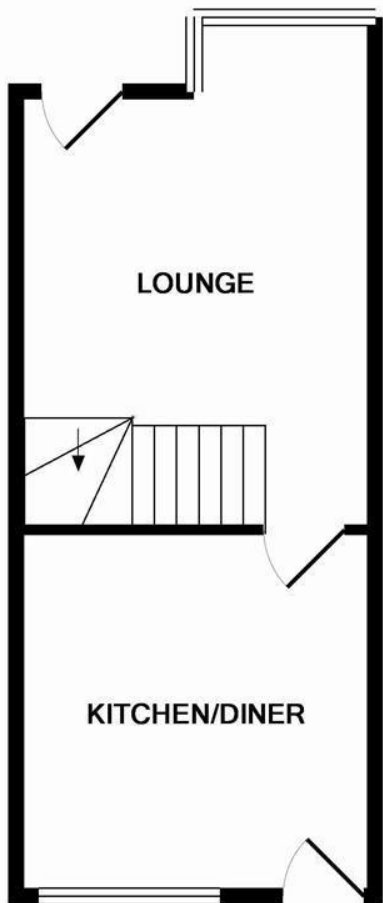
Outside 0.00m x 0.00m (0'0" x 0'0")

Outside To the front there's a tandem drive with parking for two cars, along with slate chipped garden area. To the rear there's a private and not overlooked rear garden with an artificial lawn and deck.

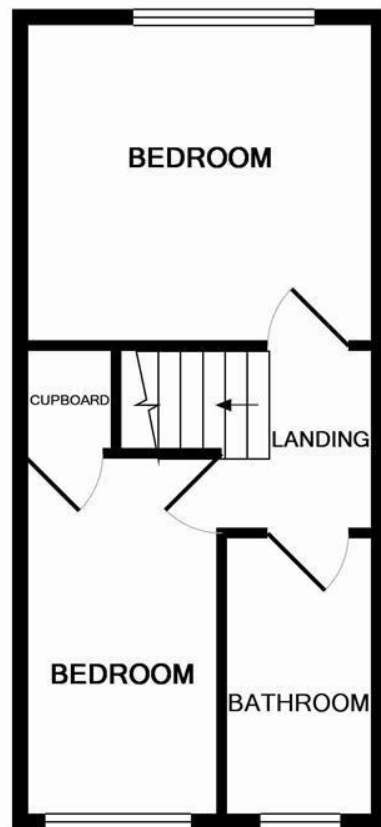
Location 0.00m x 0.00m (0'0" x 0'0")

Location Situated in Woodville, a thriving village close to the National Forest and the South Derbyshire town of Swadlincote. A largely residential area, Woodville has a number of local amenities on offer and is only a short drive from Swadlincote, Ashby de la Zouch and the M42.





GROUND FLOOR
APPROX. FLOOR
AREA 280 SQ.FT.
(26.0 SQ.M.)



1ST FLOOR
APPROX. FLOOR
AREA 268 SQ.FT.
(24.9 SQ.M.)

TOTAL APPROX. FLOOR AREA 548 SQ.FT. (50.9 SQ.M.)

Whilst every attempt has been made to ensure the accuracy of the floor plan contained here, measurements of doors, windows, rooms and any other items are approximate and no responsibility is taken for any error, omission, or mis-statement. This plan is for illustrative purposes only and should be used as such by any prospective purchaser. The services, systems and appliances shown have not been tested and no guarantee as to their operability or efficiency can be given

Made with Metropix ©2011

