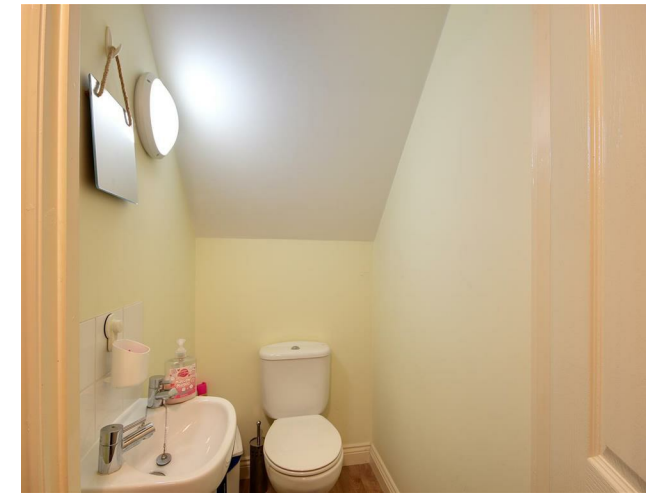




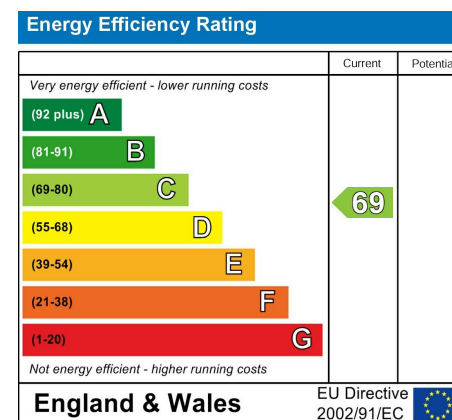
3 Florence Cottages, Wembley Gardens, Lancing, BN15 9WF
£1,100 Per Calendar Month



A delightful one-bedroom terraced house located in the sought-after Wembley Gardens area of Lancing, within easy reach of local shops and excellent transport links. Downstairs features a welcoming living room with space for dining, along with a well-fitted kitchen to the front of the property, offering matching wall and base units and space for appliances. The current tenant may be able to leave their white goods if required*. A convenient downstairs W/C completes the ground floor. Upstairs, the property comprises a bright bathroom with a shower over the bath, and a generously sized double bedroom with built-in wardrobes. Externally, the property benefits from a private rear garden, while on-street parking is available nearby. The parking at the front is available on a first come first served basis. Available from mid-November. Council Tax Band: B. EPC Rating: C.

- Sought-after location close to amenities and transport links
- One-bedroom terraced cottage
- Private rear garden
- Available mid November





These particulars are believed to be correct, but their accuracy is not guaranteed. They do not form part of any contract. The services at this property, ie gas, electricity, plumbing, heating, sanitary and drainage and any other appliances included within these details have not been tested and therefore we are unable to confirm their condition or working order.

