

CHARLES ORLEBAR

Estate Agents & Auctioneers

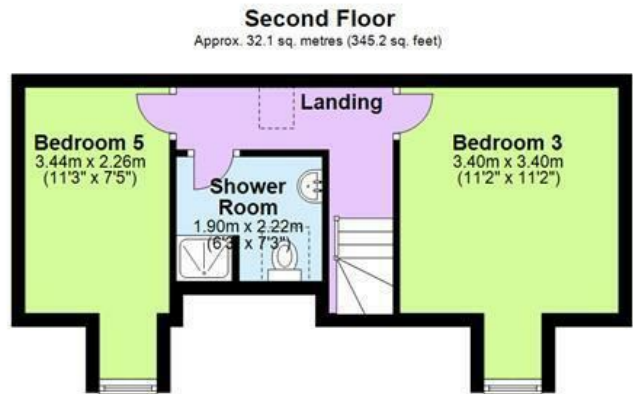
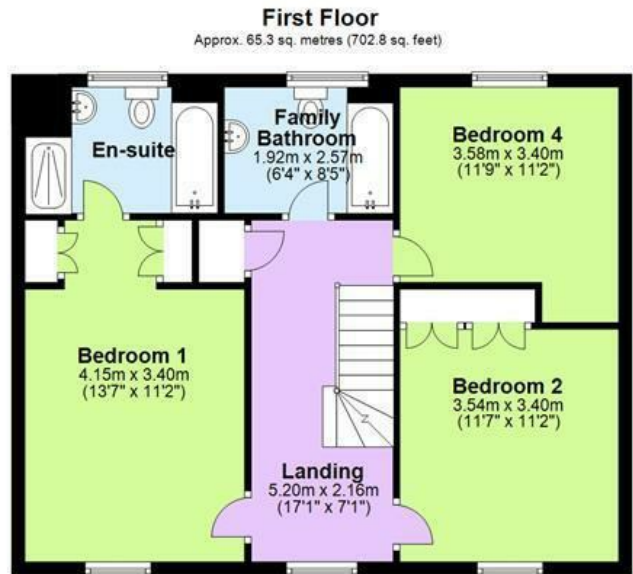
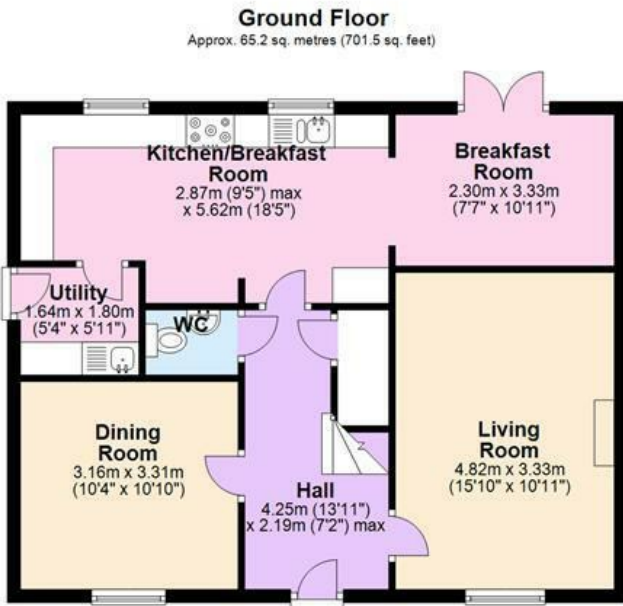


22 Batsmans Drive, Rushden, Northamptonshire, NN10 6EW

Charles Orlebar presents - a spacious family home with five bedrooms and ample living space on the ground floor located in this quiet, sought after cul de sac and within walking distance of Rushden Lakes and the centre of Higham Ferrers. Offering a very private rear garden backing onto woodland, there is ample off road parking in front of the detached double garage. Available unfurnished.

- 5 Bedrooms
- 2 Receptions
- En-suite
- Kitchen/family room
- 3 bathrooms
- Double garage
- Approx 6 car driveway
- Private gardens
- Council Tax - F

£2,000 PCM Deposit £2,307



Total area: approx. 162.5 sq. metres (1749.5 sq. feet)

Our floorplans are for visual perspective only and are not to scale. They should not be relied upon for exact rendition of the interior layout and proportion. Wall thickness, door hangs, converging walls and chimney stacks may not be shown.
Plan produced using PlanUp.

LOCATION, SITE AND FLOOR PLANS AND ANY PHOTOGRAPHS Are provided for initial visual guidance only and are not to scale and may omit features that would affect your decision. Please ring and discuss any queries you may have.

MEASUREMENTS The measurements in these details are given as a guide only and should not be relied upon beyond their means as a general rule of thumb.

SERVICES Any proposed tenant must establish before tenancy that TV aerials, satellite dishes, and telephone points work. All tenants are to assume that these services are disconnected and to be reconnected at the tenant's cost.

PARTICULARS Charles Orlebar Estate Agents Ltd, for themselves and for the landlords, give notice that the particulars are set out as a general outline only for the guidance of intended purchasers and do not constitute, nor constitute part of an offer or contract.

TELEVISION, PHONE, AND BROADBAND SERVICES are untested and are not provided by the landlord

CHARLES ORLEBAR ESTATE AGENTS - 9-11 High Street, Rushden, Northamptonshire, NN10 9JR
Tel: 01933 311121 Email: lettings@charlesorlebar.co.uk <https://charlesorlebar.co.uk/>

Energy Efficiency Rating		Current	Potential
Very energy efficient - lower running costs			
(92 plus) A			
(81-91) B			
(69-80) C			
(55-68) D			
(39-54) E			
(21-38) F			
(1-20) G			
Not energy efficient - higher running costs			
England & Wales		75	84
		EU Directive 2002/91/EC	

Environmental Impact (CO ₂) Rating		Current	Potential
Very environmentally friendly - lower CO ₂ emissions			
(92 plus) A			
(81-91) B			
(69-80) C			
(55-68) D			
(39-54) E			
(21-38) F			
(1-20) G			
Not environmentally friendly - higher CO ₂ emissions			
England & Wales			
		EU Directive 2002/91/EC	