

## 3 Wedgwood Place Cobham Surrey KT11 1JB



### 4 bedrooms - Mid Terrace

A modern mid-terrace charming mews style family townhouse set in a private secure gated development and within short distance to International Community School. Also walking distance of Cobham village, ACS & Cobham Free school, local schools and recreation park. The property comes with a garage in block.

**Available: Immediately**

**Rent: £ 2750 pcm**

**Furnishings: Unfurnished**

**Contact: 01932 860900**

Exceptional Service Exceptional Care

APW Cobham 65 Portsmouth Road, Cobham, Surrey KT11 1JQ

Tel: +44 (0)1932 860900 Fax: +44 (0)1932 866090 email: cobham@apwproperty.com

**Cobham • Weybridge**

[www.apwproperty.com](http://www.apwproperty.com)

VAT Number: 212551112

APW Property is a trading name of Countrywide Residential Lettings Limited, Registered Office Greenwood House, 1st Floor, 91-99 New London Road, Chelmsford, Essex, CM2 0PP. Registered in England Number 02995024 which is an agent and subsidiary of Countrywide Estate Agents, Registered Office Greenwood House, 1st Floor, 91-99 New London Road, Chelmsford, Essex, CM2 0PP. Registered in England Number 789476. Countrywide Residential Lettings Limited is regulated by ARLA Propertymark. Countrywide Estate Agents is an appointed representative of Countrywide Principal Services Limited which is authorised and regulated by the Financial Conduct Authority.





**APW**  
Exclusively Lettings

Proud member of the  
John D Wood & Co. Family



**Short Drive to International  
Community School**

**Private Gated Development**

**Flexible Accommodation over Three  
Floors**

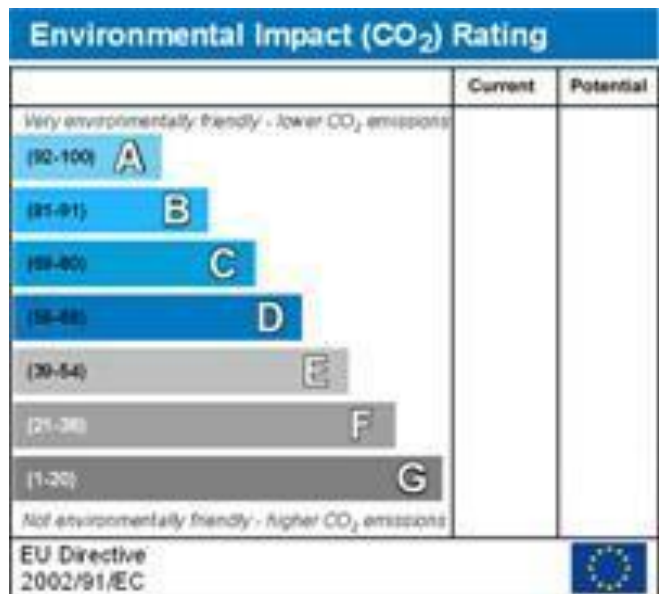
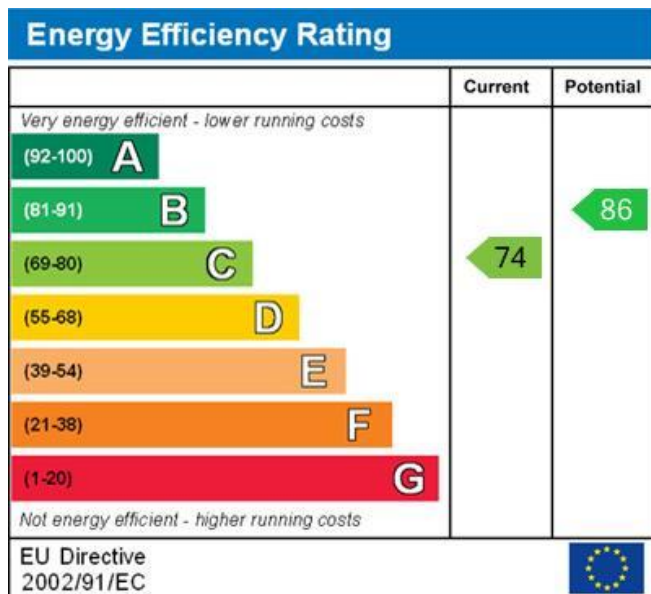
**Parking and Garage in Block.**

**Walk to Cobham Village & Local  
Schools**

**Mid Terrace Mews Style  
Townhouse**

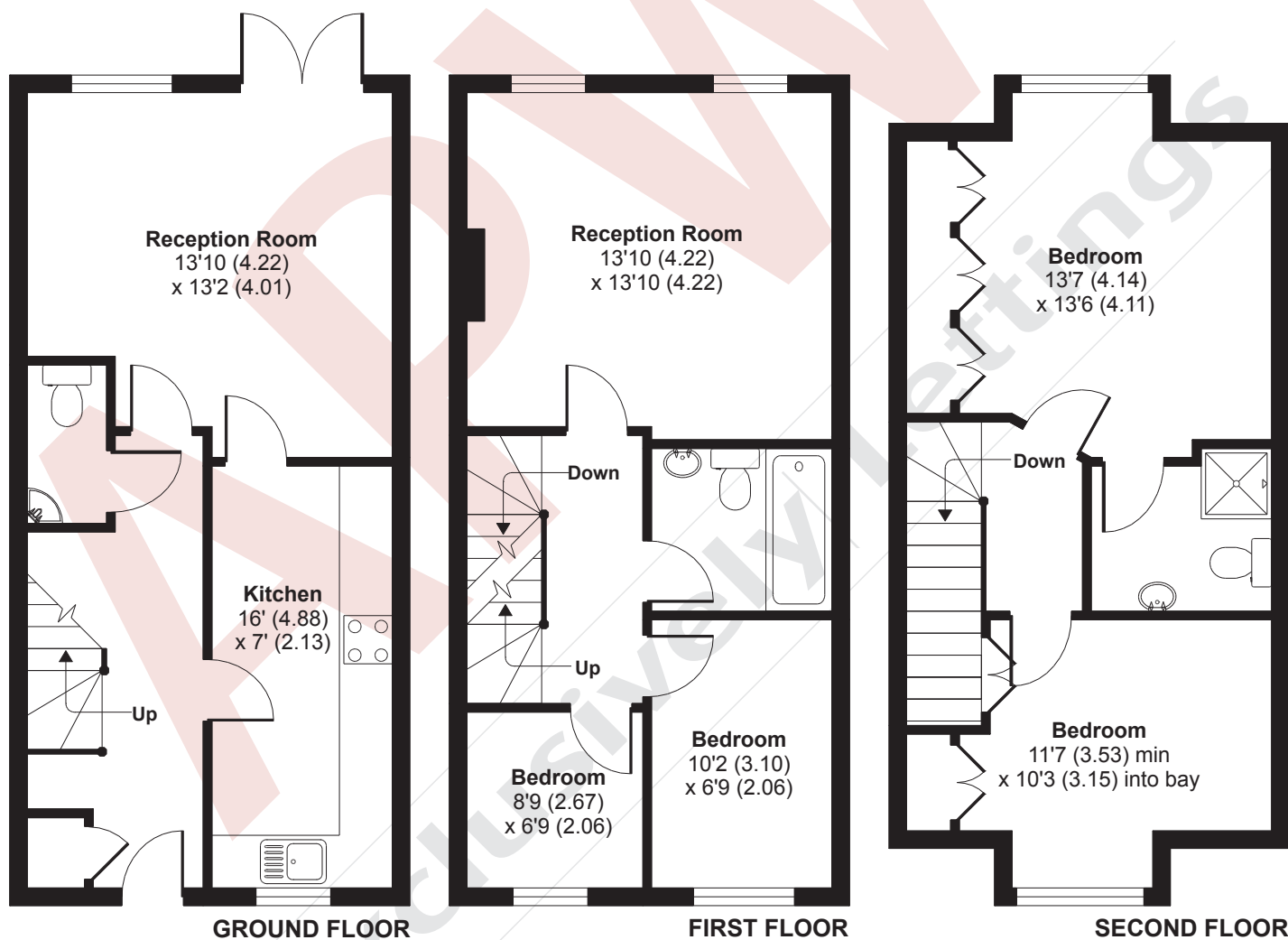
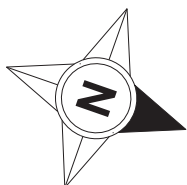
**Enclosed Rear Garden**

**Payment of Intent - 634 GBP**



#### Important Information relating to properties displayed

1. The Payment of Intent will be the equivalent to one weeks rent - other charges may apply see <https://www.apwproperty.com> for further details
2. Particulars: Any property particulars are not an offer or contract, nor part of one. You should not rely on statements by APW in the particulars or by word of mouth or in writing ("information") as being factually accurate about the property, its condition or its value. Neither APW nor any joint agent has any authority to make any representations about the property, and accordingly any information given is entirely without responsibility on the part of the agents, seller(s) or lessor(s).
3. Photos etc: The photographs show only certain parts of the property as they appeared at the time they were taken. Areas, measurements and distances given are approximate only.
4. Regulations etc: Any reference to alterations to, or use of, any part of the property does not mean that any necessary planning, building regulations or other consent has been obtained. A buyer or lessee must find out by inspection or in other ways that these matters have been properly dealt with and that all information is correct.
5. VAT: The VAT position relating to the property may change without notice.
6. Information on the web-site about a property is liable to be changed at any time. For more information please view our legal notice: <https://www.apwproperty.com>



**APPROX. GROSS INTERNAL FLOOR AREA 1217 SQ FT 113.1 SQ METRES**

Whilst every attempt has been made to ensure the accuracy of the floor plan contained here, measurements of doors, windows and rooms are approximate and no responsibility is taken for any error, omission or misstatement. These plans are for representation purposes only as defined by RICS Code of Measuring Practice and should be used as such by any prospective purchaser. Specifically no guarantee is given on the total square footage of the property if quoted on this plan. Any figure given is for initial guidance only and should not be relied on as a basis of valuation.

Copyright nichecom.co.uk 2012 Produced for APW REF: 248614