



11 Mayfair, Strood, Rochester, ME2 4QX
Price Guide £210,000

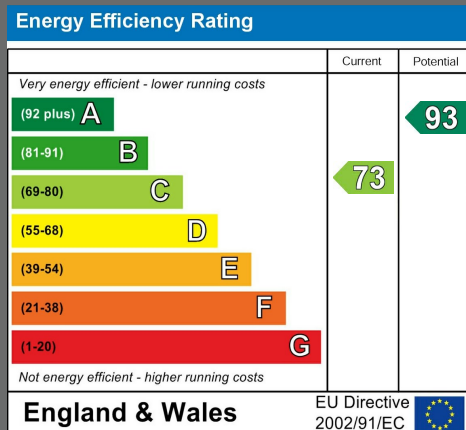


A well presented pre-war terraced house offering a comfortable living space for those seeking a cosy abode. Boasting living room, separate dining room, 2 bedrooms, and 1 bathroom across 636 sq ft, this property is perfect for a first-time buyer or an investor looking to rent out a quaint residence.

Situated along a pedestrianised street in Strood, this two-bedroom terrace has a homely feel from the moment you step inside. The ground floor welcomes you with two inviting reception rooms with a lounge and a separate dining room, a kitchen, and a convenient bathroom, while the first floor houses two spacious double bedrooms.

Externally, a rear garden provides a outdoor space. Whether you're looking to take your first step onto the property ladder or expand your investment portfolio, this property offers a promising opportunity in a convenient location with direct link to London in 35 minutes from the station.

- Beautifully Presented Mid-Terrace Freehold House
- Two Double Bedrooms
- Two reception Rooms
- Ground Floor Bathroom
- Kitchen
- Location on a Pedestrianised Street
- GFCH & Double Glazing
- Ideal First Time Buy Or Buy To Let
- Short walk to Strood station and the direct link to London in 35 minutes
- EPC Rating C.





LOCAL AREA INFORMATION ON STROOD

Situated on the northwest bank of the River Medway, lies the residential town of Strood which is well placed for access to A2/M2 providing good links to the Kent Coast and London. Strood also benefits from its own train station providing services to London Stations within 35 minutes, Maidstone, Tonbridge and Dover.

Strood town centre has a great range of shops, including well-known high street names that sit alongside many family-owned businesses giving Strood a reputation for quality, value and friendly service. There is a retail park where you can find major chain stores such as Matalan, Argos, B&M and much more, including free parking.



The history of Strood dates back centuries as it has been dominated by the river, the bridges and the road and rail links. In the 13th century the Knights Templars would frequently visit Strood by stopping off at Temple Manor for fresh horses and rest breaks as they joined or returned from their crusades to the Holy Land.

With a short walk to historic Rochester with its High Street and the river promenade where there is beautiful architecture and deep rooted British history in abundance.

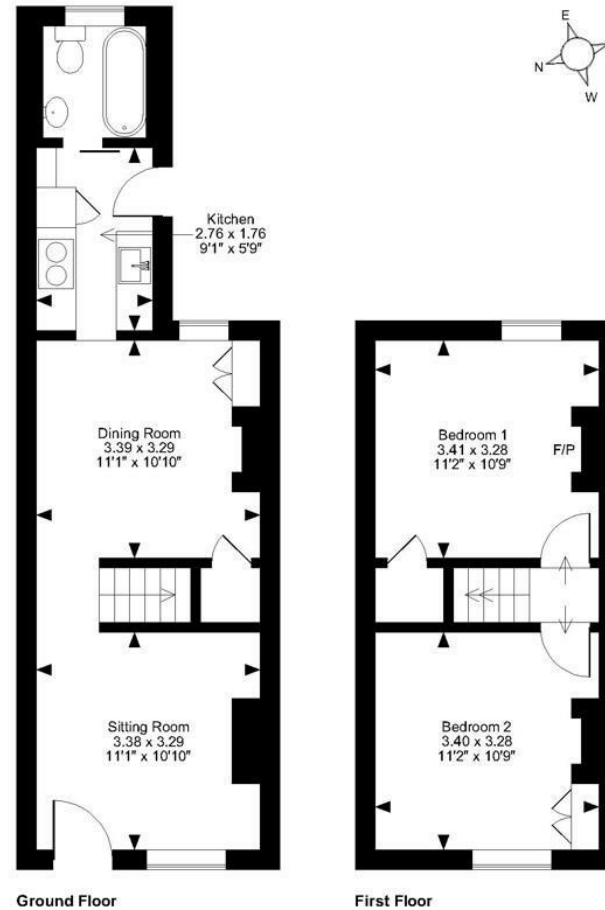


ADDITIONAL INFORMATION

- Freehold
- Council Tax Band B
- EPC Rating C
- Double Glazing
- Gas Central Heating



Mayfair, Rochester
Approximate Gross Internal Area
636 Sq Ft/59 Sq M



Ground Floor

First Floor

FOR ILLUSTRATIVE PURPOSES ONLY - NOT TO SCALE

The position & size of doors, windows, appliances and other features are approximate only.
© ehouse. Unauthorised reproduction prohibited. Drawing ref. dig/8606279/SS

Page & Wells limited for themselves and for the vendors of this property whose agents they are give notice that: 1. These particulars do not constitute any part of, an offer or a contract. 2. All statements contained in these particulars as to this property are made without responsibility on the part of Page & Wells Limited or the Vendor. 3. None of the statements contained in these particulars as to the property is to be relied on as statements or representations of fact. 4. Any intending purchaser must satisfy himself by inspection or otherwise as to the correctness of each of the statements contained in these particulars. 5. The vendor does not make or give, and neither Page & Wells Limited nor any person in their employment has any authority to make or give any representation whatsoever in relation to this property. These particulars are supplied on the understanding that all negotiations are carried out throughout Page & Wells Limited. Properties with a reference prefixes EAA are those which Page & Wells Limited disclose an interest in accordance with the provisions of the Estates Agents Act 1979

