



**Manor House Hermitage Road, Higham, Rochester, ME3 7NE**  
**Offers In Excess Of £2,750,000**





IMPRESSIVE PERIOD MANOR HOUSE accessed via a private sweeping driveway this house sits nestled in 2 acres of private, uninterrupted land. Please note the house is NOT listed.

This country Manor House with indoor Pool and Hot Tub is situated in the lovely village of Higham in Rochester. There are 6/7 bedrooms and 5 bathrooms as well as a large indoor pool with separate reception area and bar space. The reception rooms are vast and include grand living room, grand dining room and bar room opening out to a huge and frankly magnificent terrace. It also has a games room/Bedroom with pool table. Included is a large indoor swimming pool and Hot Tub.

Once upstairs there are 6/7 bedrooms and 5 bathrooms all of which are large in size and many of them are overlooking the impressive grounds. Spacious and airy the house feels homely even with its magnitude and grandeur. Parking is in abundance with the driveway and gravelled area to the front of the house with an additional triple garage too.

Situated in the leafy village of Higham in Kent, within a very short distance of the Country House owned by Charles Dickens. The house is on the edge of a village and is situated on a lovely country lane with beautiful views. Great for country walks. The village has two pubs, a post office, bakery and local take away facilities.

This property also benefits from close connections to:

Bluewater shopping centre (15 Minutes)


15 minutes from Ebbsfleet International train station.

20 minutes to St. Pancras London from Ebbsfleet.

40 minutes from Gatwick International Airport.

Additionally please note the property is not listed.

- Victorian Period Manor House
- Within Higham Village
- 6/7 Bedrooms 5 Bathrooms
- Triple Garage
- Extensive Magnificent Reception Rooms
- Large Indoor Swimming Pool
- Games Room
- Sweeping Driveway and Gardens
- Enormous Terrace
- EPC Rating D

Energy Efficiency Rating		
	Current	Potential
<i>Very energy efficient - lower running costs</i>		
(92 plus) <b>A</b>		
(81-91) <b>B</b>		<b>83</b>
(69-80) <b>C</b>		
(55-68) <b>D</b>	<b>62</b>	
(39-54) <b>E</b>		
(21-38) <b>F</b>		
(1-20) <b>G</b>		
<i>Not energy efficient - higher running costs</i>		
<b>England &amp; Wales</b>	EU Directive 2002/91/EC	







### LOCAL AREA INFORMATION FOR HIGHAM

situated in the leafy village of Higham in Kent, within very short distance of the Knowle Country House wedding venue. The house is on the edge of a village and is situated on a lovely country lane with beautiful views. Great for country walks. The village has two pubs, a post office, bakery and local take away facilities. The property is also situated within half a mile Of Knowle Country House wedding venue. 5.3km from Rochester castle.

Rochester is a town in the unitary authority of Medway, in Kent, England. It is at the lowest bridging point of the River Medway, about 30 miles (50 km) from London. The town forms a conurbation with neighbouring towns Chatham, Rainham, Strood and Gillingham. Rochester was a city until losing its status as one in 1998 following the forming of Medway and failing to protect its status as a city. There have been ongoing campaigns to reinstate the city status for Rochester.

### ADDITIONAL INFORMATION

NOT LISTED

40 Minutes from Gatwick International Airport

15 Mins from Ebsfleet International Station

35 Minutes from London St Pancreas

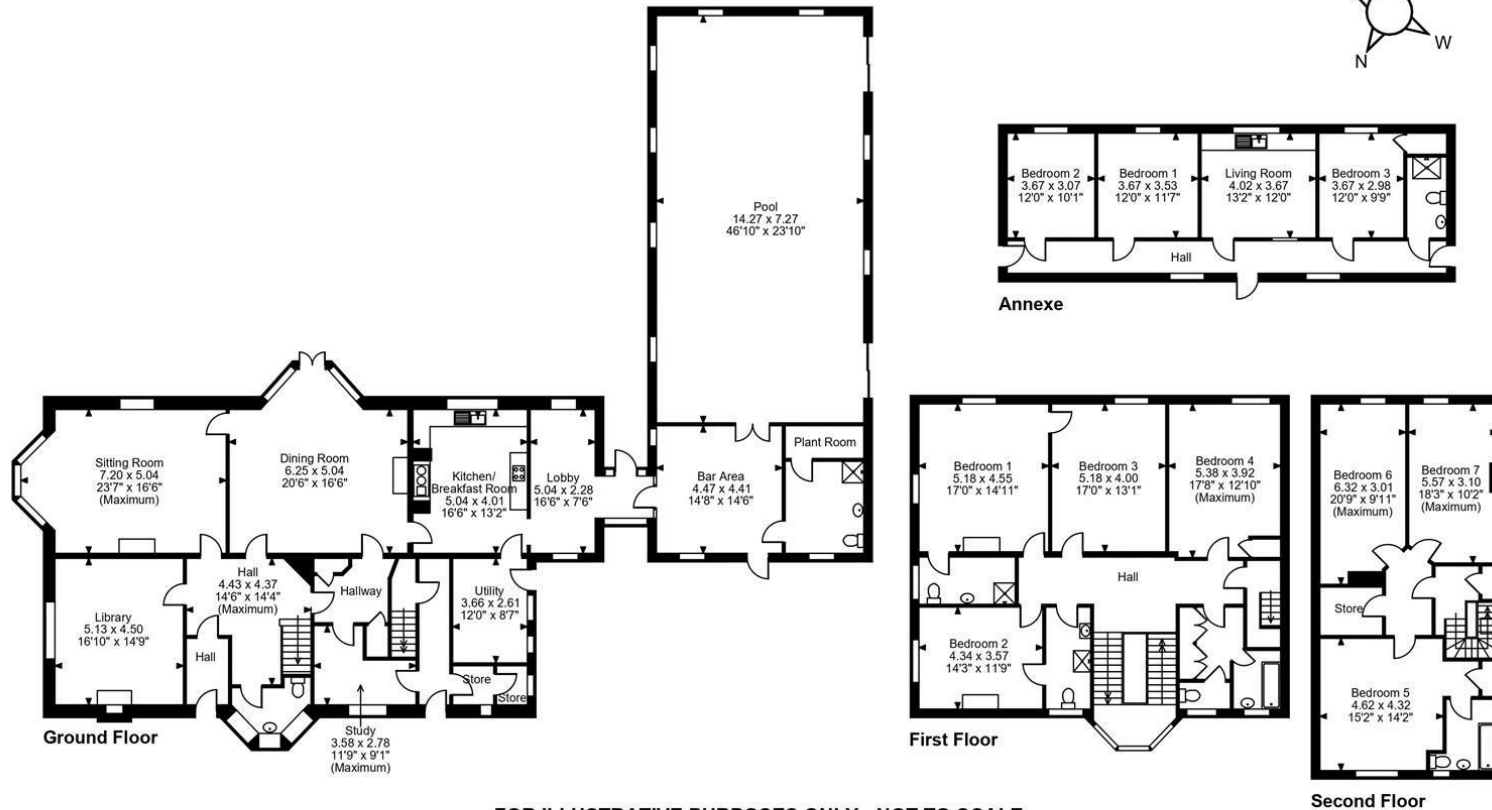
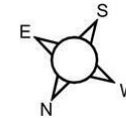
Victorian Manor House

Council Tax Band G

EPC Rating D



**Higham Grange, Hermitage Road, Higham, Rochester**  
**Approximate Gross Internal Area**  
**Main House = 5865 Sq Ft/545 Sq M**  
**Annexe = 814 Sq Ft/76 Sq M**  
**Total = 6679 Sq Ft/621 Sq M**



**FOR ILLUSTRATIVE PURPOSES ONLY - NOT TO SCALE**

The position & size of doors, windows, appliances and other features are approximate only.

© ehous. Unauthorised reproduction prohibited. Drawing ref. dig/8579763/TOW

Page & Wells limited for themselves and for the vendors of this property whose agents they are give notice that: 1. These particulars do not constitute any part of, an offer or a contract. 2. All statements contained in these particulars as to this property are made without responsibility on the part of Page & Wells Limited or the Vendor. 3. None of the statements contained in these particulars as to the property is to be relied on as statements or representations of fact. 4. Any intending purchaser must satisfy himself by inspection or otherwise as to the correctness of each of the statements contained in these particulars. 5. The vendor does not make or give, and neither Page & Wells Limited nor any person in their employment has any authority to make or give any representation whatsoever in relation to this property. These particulars are supplied on the understanding that all negotiations are carried out throughout Page & Wells Limited. Properties with a reference prefixes EAA are those which Page & Wells Limited disclose an interest in accordance with the provisions of the Estates Agents Act 1979

