



11 Nursery Road, Ditton, Aylesford, ME20 6DY
Asking Price £400,000




Creatively extended and spacious 4 bedroom end of terrace house. Standing out as one of the largest plots on this popular road in the area of Ditton is this lovely family house. In need of some finalising, this house is a particularly large plot to three sides of the house and you enter from a front garden area which is secluded by large well maintained hedges.

Once into the hall you access the lounge to one side and follow through the spacious hall to the immaculate kitchen and further dining area. Further along is a bright further room currently used as a bedroom and ensuite. (There is no ensuite in place) To the first floor there are three bedrooms and a family bathroom. The garden to the rear is laid to lawn with a patio area and a gate that leads round the side of the property to a large off street parking area for multiple cars.

If you are looking for a large family home in the fabulous Ditton area then you must view this house as soon as possible. EPC grade C

- Lovely Large Plot
- 4 Bedrooms
- 2 Bathrooms
- Multiple Reception Rooms
- Spacious End of Terrace House
- Popular Ditton, Aylesford Location
- Lovely Rear Garden
- New Electrics Throughout.
- GFCH and Double Glazing Throughout

Energy Efficiency Rating		
	Current	Potential
<i>Very energy efficient - lower running costs</i>		
(92 plus) A		
(81-91) B		84
(69-80) C	69	
(55-68) D		
(39-54) E		
(21-38) F		
(1-20) G		
<i>Not energy efficient - higher running costs</i>		
England & Wales	EU Directive 2002/91/EC	





LOCAL AREA INFORMATION FOR DITTON

Ditton is a sought after area thanks to its convenient access to so many things.

For recreation you have a K-Sports Centre, the local leisure centre at Larkfield, many parks, green spaces and countryside close by. Leybourne Lakes and Manor Park are particularly noteworthy.

There are a good range of shops, supermarkets and eateries at Ditton, Larkfield and Aylesford. West Malling is the closest town (less than 2 miles away) and is one of the most attractive small towns in mid-Kent with a wide main street lined on each side by a fine collection shops and eateries. Maidstone is approximately 4.6 miles away.

For the commuter Junction 4 of the M20 gives access to the motorway network. There are mainline train stations at nearby West Malling, Aylesford and East Malling.

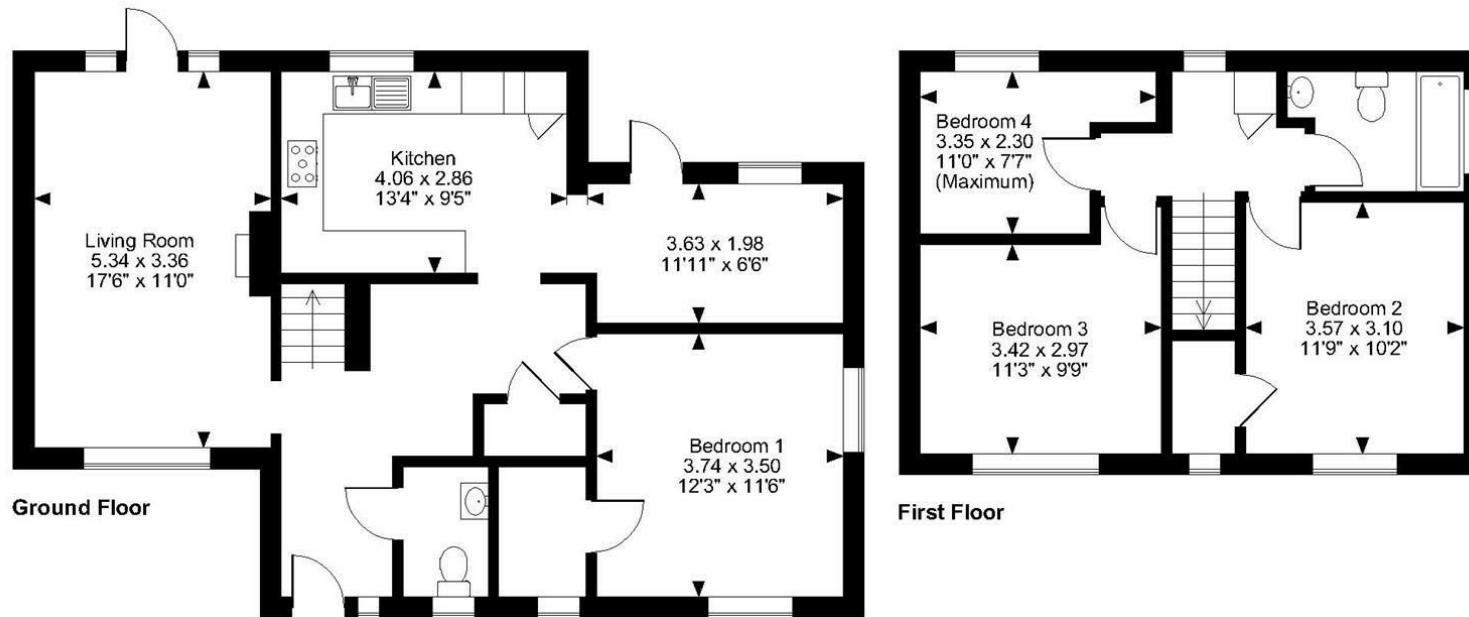
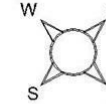
For education there is a comprehensive range of primary, grammar and private educational opportunities. For more schools information please visit www.kent-pages.co.uk/education or ask for a Page & Wells Key Facts for Buyers Guides.

Additional Information

- 4 Bedroom House
- Council Tax Band D
- EPC Rating C
- UPVC Double Glazing



Nursery Road, Ditton, Aylesford
Approximate Gross Internal Area
1216 Sq Ft/113 Sq M



FOR ILLUSTRATIVE PURPOSES ONLY - NOT TO SCALE

The position & size of doors, windows, appliances and other features are approximate only.

© ehouse. Unauthorised reproduction prohibited. Drawing ref. dig/8571518/TOW

Page & Wells limited for themselves and for the vendors of this property whose agents they are give notice that: 1. These particulars do not constitute any part of, an offer or a contract. 2. All statements contained in these particulars as to this property are made without responsibility on the part of Page & Wells Limited or the Vendor. 3. None of the statements contained in these particulars as to the property is to be relied on as statements or representations of fact. 4. Any intending purchaser must satisfy himself by inspection or otherwise as to the correctness of each of the statements contained in these particulars. 5. The vendor does not make or give, and neither Page & Wells Limited nor any person in their employment has any authority to make or give any representation whatsoever in relation to this property. These particulars are supplied on the understanding that all negotiations are carried out throughout Page & Wells Limited. Properties with a reference prefixes EAA are those which Page & Wells Limited disclose an interest in accordance with the provisions of the Estates Agents Act 1979

