



Pickering Street, Loose, Maidstone, ME15 9RH
Guide Price £270,000

This charming Grade II listed cottage is set in the heart of the Loose and steeped in character offering a rare opportunity to modernise a historic home in one of Maidstone's most sought-after village settings.

The accommodation includes an entrance hall, a spacious kitchen/breakfast room, a generous lounge/diner with beautiful inglenook fireplace, utility room and a ground floor bathroom. Upstairs, the main bedroom is complemented by two further bedrooms – one of which leads to the other – with the first of these featuring an en suite shower room. Outside, the property benefits from a garden to the front and rear, as well as off-road parking. The property is in need of modernisation, offering scope to improve and personalise.

Located on the quiet and picturesque Pickering Street, the property sits on the outskirts of the Loose Valley – known for its scenic countryside, streamside walks and historic charm. The well regarded Loose Primary School is within walking distance, and the property also falls within the catchment area for both Maidstone Grammar School and Maidstone Girls' Grammar.

Local shops, pubs, and amenities are close at hand, with Maidstone town centre just a short drive away for a full range of shopping and dining. For commuters, rail links to London are available via Maidstone East, Maidstone West and Staplehurst stations, offering regular services to London Bridge, Charing Cross and Victoria.



GROUND FLOOR

Entrance Hall

Lounge 14'9" x 11'7" (4.52m x 3.54m)

Kitchen 11'8" x 10'10" (3.57m x 3.32m)

Utility Room 13'6" x 6'2" (4.13m x 1.88m)

Bathroom

FIRST FLOOR

Bedroom 1 14'0" x 11'8" (4.29m x 3.56m)

Bedroom 2 12'0" x 9'1" (3.66m x 2.78m)

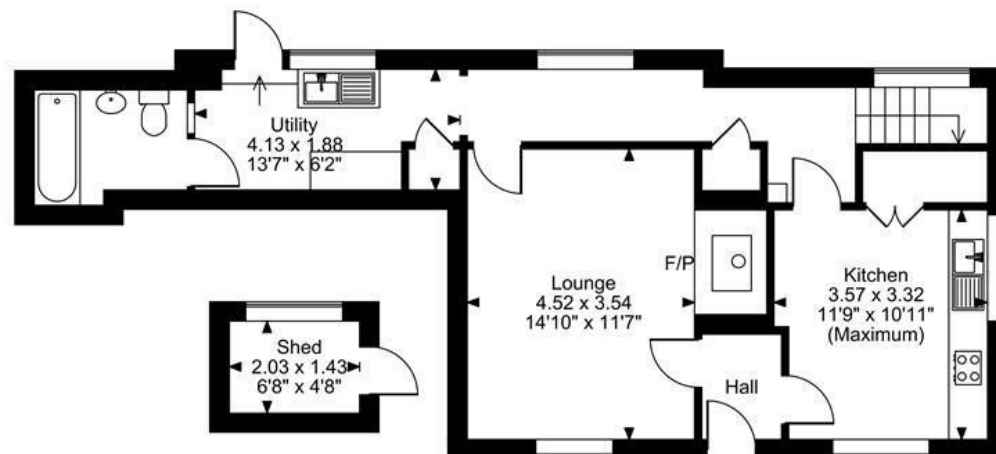
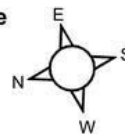
Bedroom 3 8'4" x 7'8" (2.55m x 2.34m)

Shower Room

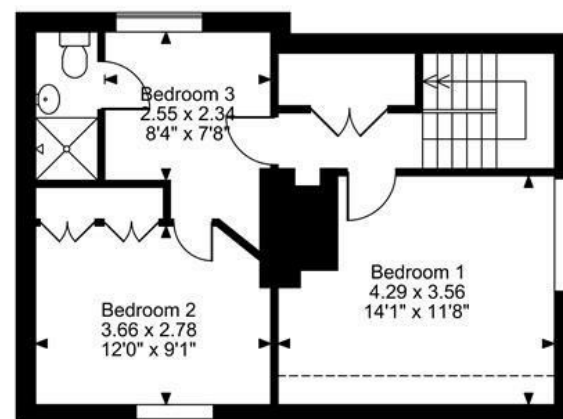
EXTERNALLY

Shed 6'7" x 4'8" (2.03m x 1.43m)

2 Pear Tree Cottage, Pickering Street, Loose, Maidstone
 Approximate Gross Internal Area
 Main House = 1064 Sq Ft/99 Sq M
 Shed = 31 Sq Ft/3 Sq M
 Total = 1095 Sq Ft/102 Sq M



Ground Floor



First Floor

FOR ILLUSTRATIVE PURPOSES ONLY - NOT TO SCALE

The position & size of doors, windows, appliances and other features are approximate only.

□ □ □ □ Denotes restricted head height

© ehouse. Unauthorised reproduction prohibited. Drawing ref. dig/8658839/SS

