



Lewis Court Drive, Boughton Monchelsea, ME17 4LQ
Price £375,000

*****NO FORWARD CHAIN*** EXTENDED THREE BEDROOM HOME IN SOUGHT AFTER RESIDENTIAL DEVELOPMENT**

Offered with no forward chain, this well-presented semi-detached home enjoys a practical layout and generous outdoor space. The ground floor comprises an entrance hall, cloakroom, a comfortable front lounge, and a rear extension creating an open-plan kitchen/diner—perfect for family living and entertaining. Upstairs, the main bedroom features fitted wardrobes, complemented by two further bedrooms and a family bathroom. Externally, there is a driveway to the front and side with ample parking, a garage, and a mature, neatly enclosed rear garden.

Boughton Monchelsea is a sought-after village just outside Maidstone, offering a strong community feel with local shops and everyday amenities close by. Boughton Monchelsea Primary School is within walking distance, with Loose Primary and Holy Family Catholic Primary also nearby. For secondary education, Cornwallis Academy is less than a mile, while Maidstone's respected grammar schools are within easy reach.

Transport links are excellent. The nearby stations of Staplehurst and Marden provide frequent services to London in under 1 hour. By car, the M20 (Junction 8) is close, giving swift access to London, the Channel Tunnel and the Kent coast.

Maidstone, the historic county town of Kent, is a thriving centre for shopping, dining and leisure. The River Medway runs through the town, offering riverside walks and attractions, while Fremlin Walk and The Mall provide excellent retail. With a mix of grammar schools, academies and higher education, plus parks, theatres and heritage sites, Maidstone combines modern convenience with historic charm—making it an appealing base for families and commuters alike.

Viewing is highly recommended. Call Page and Wells Loose Office today and book your viewing to avoid missing out.



GROUND FLOOR

Entrance Hall

Lounge 15'9" x 11'5" (4.81m x 3.50m)

Kitchen/Dining Area 21'1" x 15'10" (6.44m x 4.84m)

FIRST FLOOR

Bedroom 1 15'11" x 9'6" (4.86m x 2.92m)

Bedroom 2 8'11" x 8'0" (2.74m x 2.45m)

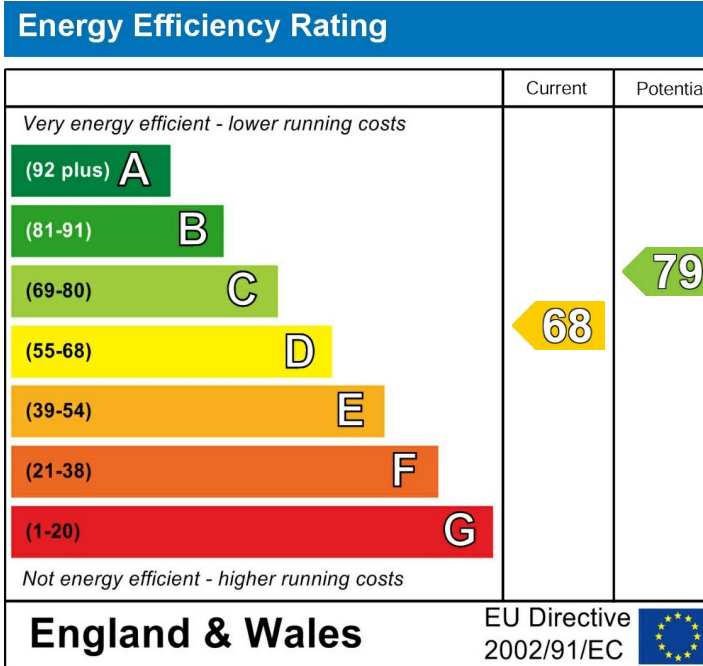
Bedroom 3 8'0" x 6'9" (2.44m x 2.06m)

Family Bathroom

EXTERNALLY

Garage 16'10" x 8'5" (5.14m x 2.57m)

Greenhouse 7'4" x 5'2" (2.26m x 1.60m)



Lewis Court Drive, Boughton Monchelsea, Maidstone, Kent

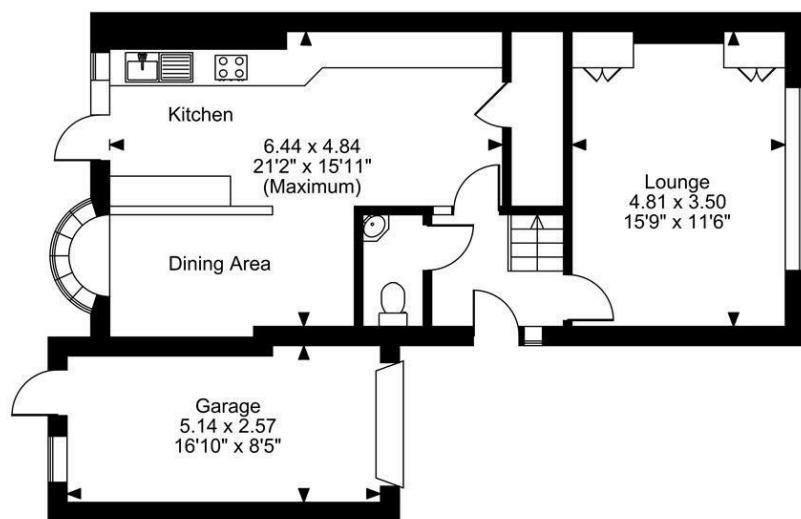
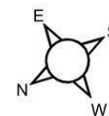
Approximate Gross Internal Area

Main House = 956 Sq Ft/89 Sq M

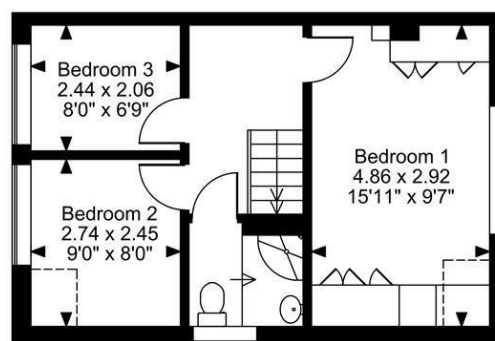
Garage = 136 Sq Ft/13 Sq M

Green House = 39 Sq Ft/4 Sq M

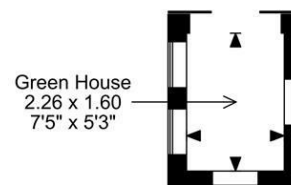
Total = 1131 Sq Ft/106 Sq M



Ground Floor



First Floor



FOR ILLUSTRATIVE PURPOSES ONLY - NOT TO SCALE

The position & size of doors, windows, appliances and other features are approximate only.

□ □ □ Denotes restricted head height

© ehouse. Unauthorised reproduction prohibited. Drawing ref. dig/8660372/LCO

