



**Georgian Drive, Coxheath, Maidstone, Kent, ME17 4QT**  
**Guide Price £350,000 to £375,000**



**\*\*\*GUIDE PRICE £350,000 TO £375,000\*\*\*THREE BEDROOM FAMILY HOME IN A DESIRABLE CUL DE SAC SITUATED IN THE POPULAR VILLAGE OF COXHEATH**

Located in the sought-after village of Coxheath on the outskirts of Maidstone, this three-bedroom semi-detached home offers a practical layout and convenient setting for families and commuters alike.

The accommodation comprises an entrance porch, a comfortable lounge, and an open-plan kitchen/dining area with sliding patio doors leading out to a paved patio and rear garden—ideal for everyday living and entertaining. Upstairs, there are three bedrooms and a family bathroom. The property is presented in generally good order, with scope for personalisation and improvement.

Coxheath is a thriving village with a range of amenities including a Tesco Express, Londis, post office, local shops, and healthcare facilities. Well-regarded primary and secondary schools are within walking distance, making it an excellent choice for families. For those needing to commute, mainline rail services to London are available from the nearby villages of Marden and Staplehurst. Viewing is highly recommended. Contact Page and Wells Loose Office and book your viewing to avoid missing out.



## GROUND FLOOR

Entrance Porch 6'0 x 4'0 (1.83m x 1.22m)

Lounge 13'6 x 13'3 (4.11m x 4.04m)

Kitchen/Diner 17'3 x 9'3 (5.26m x 2.82m)

## FIRST FLOOR

Bedroom 1 11'3 x 9'9 (3.43m x 2.97m)

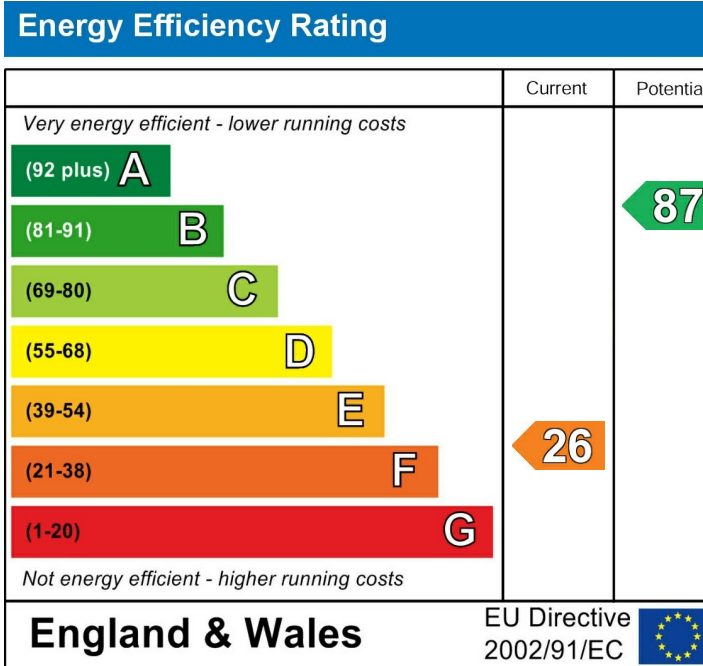
Bedroom 2 9'9 x 9'6 (2.97m x 2.90m)

Bedroom 3 8'3 x 7'6 (2.51m x 2.29m)

Bathroom 7'3 x 5'3 (2.21m x 1.60m)

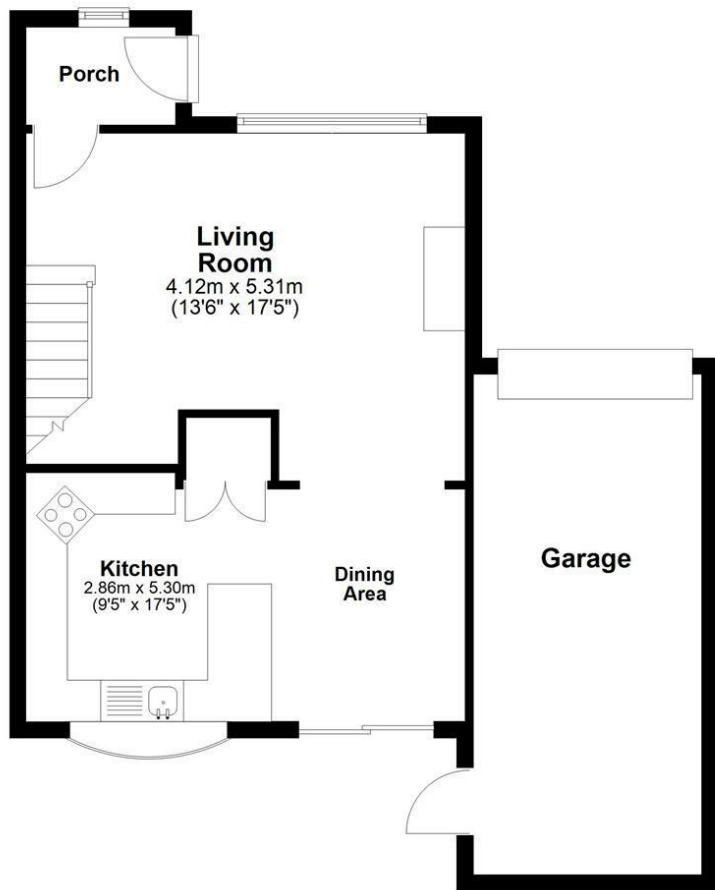
## EXTERNALLY

Garage 17'0 x 7'9 (5.18m x 2.36m)

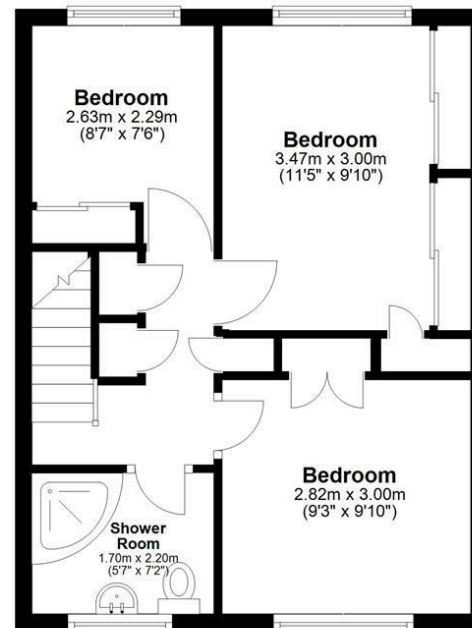




## Ground Floor



## First Floor



Total area: approx. 95.1 sq. metres (1023.5 sq. feet)

