



Pickering Street, Maidstone, Kent, ME15 9RS
Price £650,000

STUNNING, EXTENDED FAMILY HOME WITH HIGH-SPEC FINISH IN PRIME LOOSE LOCATION – WALKING DISTANCE SOUGHT AFTER LOOSE PRIMARY SCHOOL

Situated in the ever-popular village of Loose, this beautifully extended and much-improved home offers a rare opportunity to acquire a high-specification property within walking distance of the outstanding Loose Primary School. The village offers a range of local shops, amenities, and scenic walks, with Maidstone town centre just a short drive away, providing a wider selection of facilities and mainline rail links to London.

This beautiful family home provides a truly impressive living space. There is a striking entrance hall with feature staircase leads to the first floor, where there is a spacious principal bedroom with Juliet balcony, two further double bedrooms, excellent storage, and a luxurious family bathroom.

The ground floor offers flexible accommodation, including a separate sitting room/bedroom four, home office, utility room, and cloakroom. The heart of the home is the exceptional open-plan living area to the rear – incorporating a snug, high-end kitchen, and dining area with bi-folding doors that open directly onto the garden, perfect for entertaining.

Outside, the property boasts a large driveway with space for 4–5 vehicles and a stunning rear garden extending to approximately 110ft. The garden includes a summer house currently used as a gym/cinema room.

A truly unique home in a sought-after location – early viewing is highly recommended. Contact Page & Wells Loose Office on 01622 746273 to arrange your appointment.



GROUND FLOOR

Entrance Hall 10'11" x 10'5" (3.33m x 3.20m)

Living Room 12'11" x 11'4" (3.95m x 3.46m)

Kitchen/Dining Room 23'9" x 17'9" (7.25m x 5.42m)

Dining Area 11'0" x 9'0" (3.36m x 2.75m)

Utility 10'2" x 7'8" (3.12m x 2.36m)

Cloakroom

FIRST FLOOR

Bedroom 1 14'5" x 10'11" (4.40m x 3.35m)

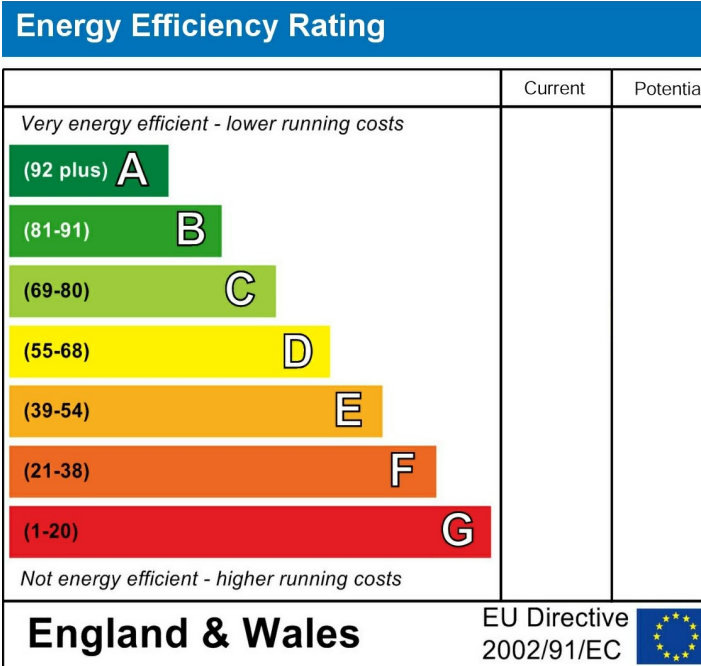
Bedroom 2 13'0" x 11'4" (3.98m x 3.47m)

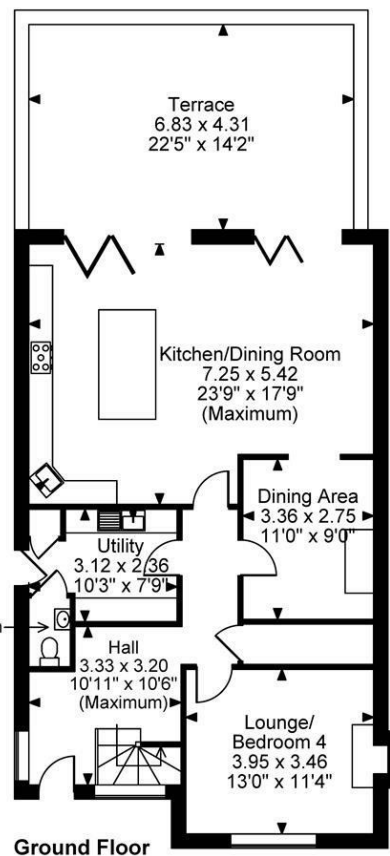
Bedroom 3 14'7" x 9'8" (4.47m x 2.95m)

Family Bathroom

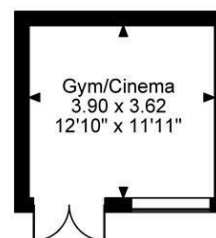
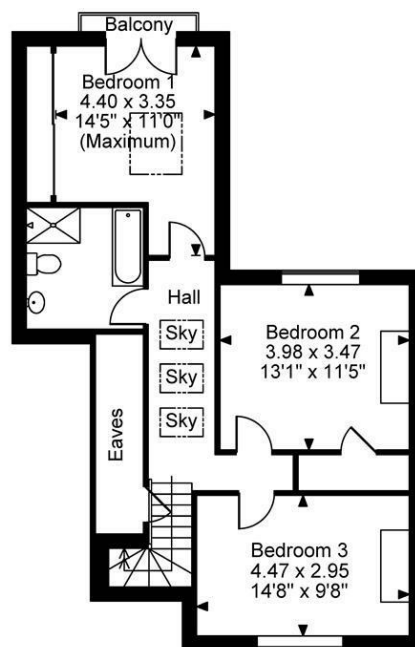
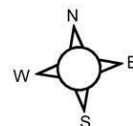
EXTERNALLY

Gym/Cinema Room 12'9" x 11'10" (3.90m x 3.62m)





Pickering Street, Maidstone, Kent
Approximate Gross Internal Area
Main House = 1587 Sq Ft/147 Sq M
Gym/Cinema = 152 Sq Ft/14 Sq M
Terrace external area = 317 Sq Ft/29 Sq M
Total = 1739 Sq Ft/161 Sq M



FOR ILLUSTRATIVE PURPOSES ONLY - NOT TO SCALE

The position & size of doors, windows, appliances and other features are approximate only.

© ehouse. Unauthorised reproduction prohibited. Drawing ref. dig/8646489/TOW

