



Stratford Drive, Maidstone, Kent, ME15 9HJ
Guide Price £350,000



GUIDE PRICE £350,000 - £375,000. THREE BEDROOM FAMILY HOME PRESENTED IN EXCELLENT CONDITION WITH GENEROUS OFF-ROAD PARKING VIA AN UNCOMMONLY LARGE DRIVEWAY

A well-presented three bedroom semi-detached home situated in a popular residential area to the south of Maidstone. The accommodation comprises an entrance hall, cloakroom, lounge, separate dining area, and kitchen with doors opening onto the rear garden. Upstairs, there are three bedrooms – the main bedroom benefiting from an en suite shower room – and a modern family bathroom.

The rear garden is mainly laid to lawn with a patio seating area. Unusually, the property benefits from a generous driveway located behind the garden, providing off-road parking for up to four vehicles. In this agent's opinion, the fence line could be altered to incorporate the driveway into the rear garden, significantly increasing the outside space, subject to any necessary consents.

Stratford Drive lies on the southern outskirts of Maidstone, within easy reach of local amenities including schools, shops, and parks. The nearby Sutton Road offers regular bus services and convenient access into the town centre, which provides a wide range of retail outlets, leisure facilities, and both mainline stations. The area is also well placed for road links via the A229 and M20, ideal for commuters.

Viewing is highly recommended! Contact Page and Wells Loose Office to arrange your viewing today and avoid missing out.



GROUND FLOOR

Entrance Hall

Cloak Room

Lounge 16'6" x 12'6" (5.03m x 3.83m)

Kitchen 10'8" x 7'4" (3.27m x 2.25m)

Dining Room 10'8" x 8'0" (3.27m x 2.46m)

FIRST FLOOR

Bedroom 1 12'5" x 10'3" (3.79m x 3.13m)

En-Suite

Bedroom 2 10'3" x 7'9" (3.13m x 2.37m)

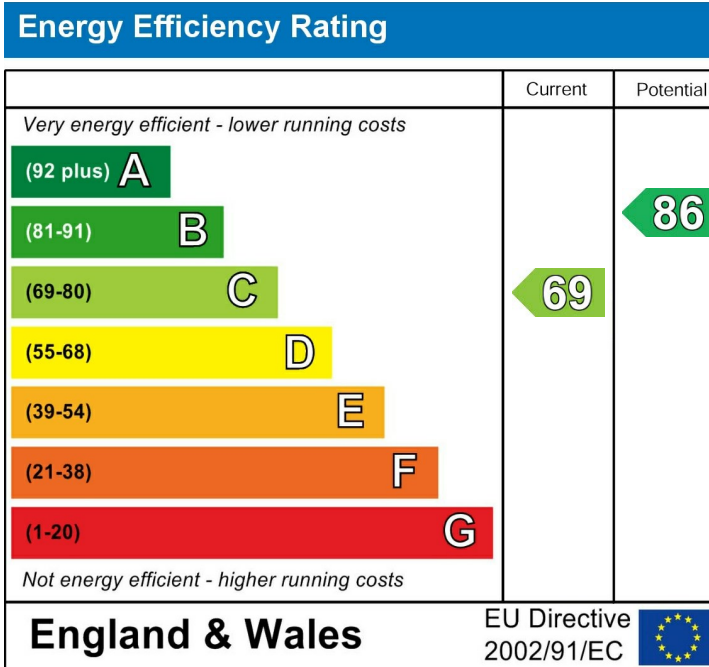
Bedroom 3 7'8" x 6'10" (2.34m x 2.09m)

Family Bathroom

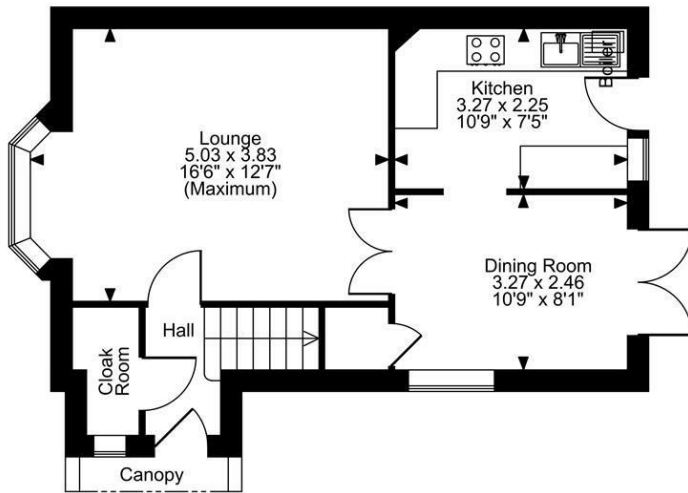
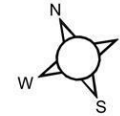
EXTERNALLY

Shed Store 7'6" x 4'5" (2.29m x 1.36m)

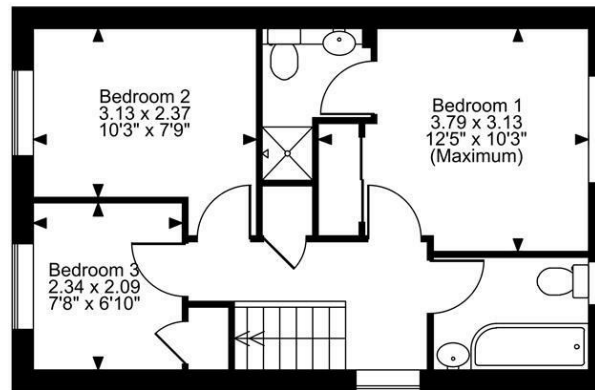
Shed 7'8" x 4'9" (2.35m x 1.45m)



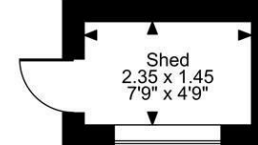
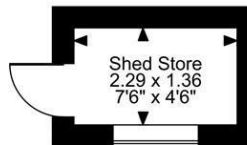
Stratford Drive, Maidstone, Kent
 Approximate Gross Internal Area
 Main House = 827 Sq Ft/77 Sq M
 Sheds = 71 Sq Ft/7 Sq M
 Total = 898 Sq Ft/84 Sq M



Ground Floor



First Floor



FOR ILLUSTRATIVE PURPOSES ONLY - NOT TO SCALE

The position & size of doors, windows, appliances and other features are approximate only.
 © ehous. Unauthorised reproduction prohibited. Drawing ref. dig/8645265/SS

