



Kingsnorth Manor Farm Crumps Lane, Ulcombe, Maidstone, ME17 1EU
Offers Over £1,900,000



Kingsnorth Manor Farmhouse and Oast – A Rare and Historic Wealden Estate

Set within beautifully mature gardens and surrounded by open farmland, Kingsnorth Manor Farmhouse is a remarkable Grade II* listed property dating back to the 1500s which has undergone extensive structural restoration at great expense by the current owner, providing a solid foundation for future owners. Brimming with character and period charm, the main house offers extensive and well-proportioned accommodation arranged over three floors, featuring a grand staircase, Jacobean oak mullioned window, wide floorboards, inglenook fireplaces, and exposed beams throughout.

The estate includes a detached two-bedroom converted oast house, arranged over two floors with distinctive roundels and generous living spaces. Adjacent is a period coach house with potential for additional accommodation or office use, subject to the usual planning consents, as well as a range of traditional agricultural outbuildings.

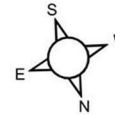
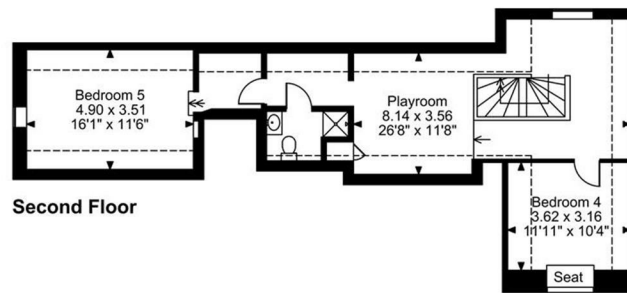
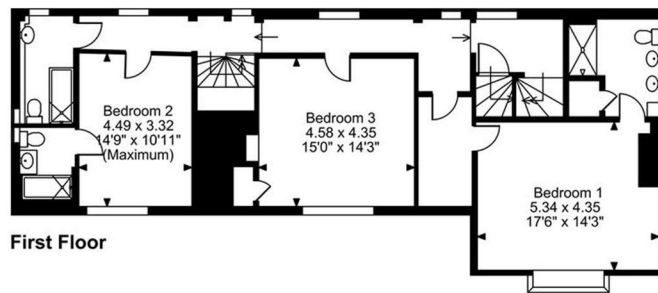
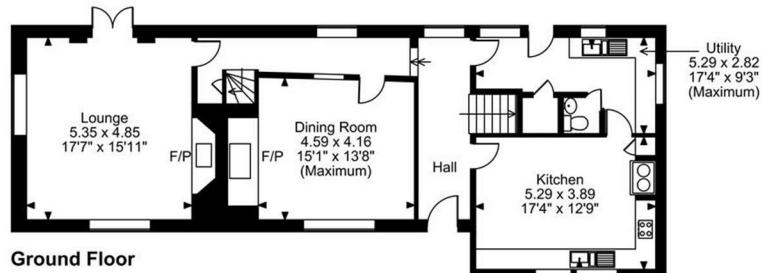
Set within approximately 4.5 acres, the property includes around 1 acre of beautifully landscaped gardens, featuring sweeping lawns, colourful borders, mature trees, and a pond. Beyond the gardens lie 3.5 acres of farmland, offering far-reaching views across the surrounding countryside. There is a greenhouse, a summerhouse with broadband, an enclosed terrace, a small orchard, and even a helicopter hangar with conversion potential. Additional land opposite the property is owned by the vendor and available by separate negotiation.

Tucked away in a tranquil setting on Crumps Lane, the property benefits from excellent transport links, with Headcorn station offering services to London in approximately 66 minutes, and Ashford International just 13 miles away with high-speed trains to London St Pancras in 37 minutes.

A truly unique opportunity to acquire a substantial and historically significant farmhouse with a converted oast and further development potential, all set within the idyllic Kentish landscape.



Kingsnorth Manor Farm, Crumps Lane, Ulcombe, Maidstone, Kent
Approximate Gross Internal Area
2898 Sq Ft/269 Sq M



FOR ILLUSTRATIVE PURPOSES ONLY - NOT TO SCALE

The position & size of doors, windows, appliances and other features are approximate only.

□ □ □ □ Denotes restricted head height

© ehouse. Unauthorised reproduction prohibited. Drawing ref. dig/8642666/SLU

- Grade II* Listed 16th Century Manor House with Rich Period Features
- Extensively restored structurally by the current owner
- Jacobean mullioned windows, inglenook fireplaces and exposed beams
- Two Bedroom Converted Oast House
- Period Coach House with potential for additional accomodation
- Range of agricultural outbuildings
- Mature gardens with lawns, pond, orchards and green house
- Peaceful rural setting with excellent access to amenities and mainline services to London
- Additional Land opposite available by separate negotiation

Page & Wells limited for themselves and for the vendors of this property whose agents they are give notice that: 1. These particulars do not constitute any part of, an offer or a contract. 2. All statements contained in these particulars as to this property are made without responsibility on the part of Page & Wells Limited or the Vendor. 3. None of the statements contained in these particulars as to the property is to be relied on as statements or representations of fact. 4. Any intending purchaser must satisfy himself by inspection or otherwise as to the correctness of each of the statements contained in these particulars. 5. The vendor does not make or give, and neither Page & Wells Limited nor any person in their employment has any authority to make or give any representation whatsoever in relation to this property. These particulars are supplied on the understanding that all negotiations are carried out throughout Page & Wells Limited. Properties with a reference prefixes EAA are those which Page & Wells Limited disclose an interest in accordance with the provisions of the Estates Agents Act 1979

