



Loose Road, Maidstone, ME15 9UW
Price £325,000

*****ESTABLISHED FORWARD CHAIN***SPACIOUS 3/4 BEDROOM HOME WITH DRIVEWAY IN A POPULAR LOOSE LOCATION**

Recently decorated and measuring over 900 sq. ft., this well-proportioned end of terrace home offers versatile accommodation across four levels. The ground floor features a cosy lounge with exposed brick fireplace, leading into the dining room, a fitted kitchen, and a family bathroom. The lower ground floor offers a useful cellar, ideal as storage or an optional fourth bedroom. Upstairs, there are two excellent-sized bedrooms on the first floor and a further bedroom on the second floor.

Externally, the property benefits from a driveway providing off-road parking, with gated access leading to a generous rear garden—initially laid to patio and opening onto a substantial lawned area. Located in the ever-popular Loose area, the property enjoys access to well-regarded schools, picturesque countryside walks, and a range of local amenities, while being within easy reach of Maidstone town centre and mainline rail links.

Viewing is highly recommended. Call Page and Wells Loose Office today and book your viewing to avoid missing out



GROUND FLOOR

Lounge 22'1" x 11'11" (6.74m x 3.64m)

Kitchen 10'9" x 7'10" (3.29m x 2.40m)

Bathroom

FIRST FLOOR

Bedroom 1 11'11" x 11'10" (3.64m x 3.62m)

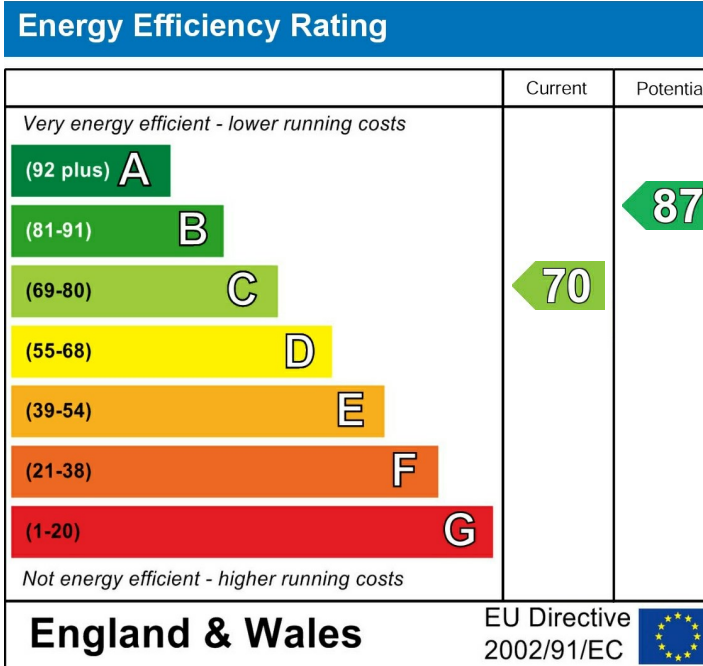
Bedroom 3 9'10" x 5'11" (3.02m x 1.82m)

SECOND FLOOR

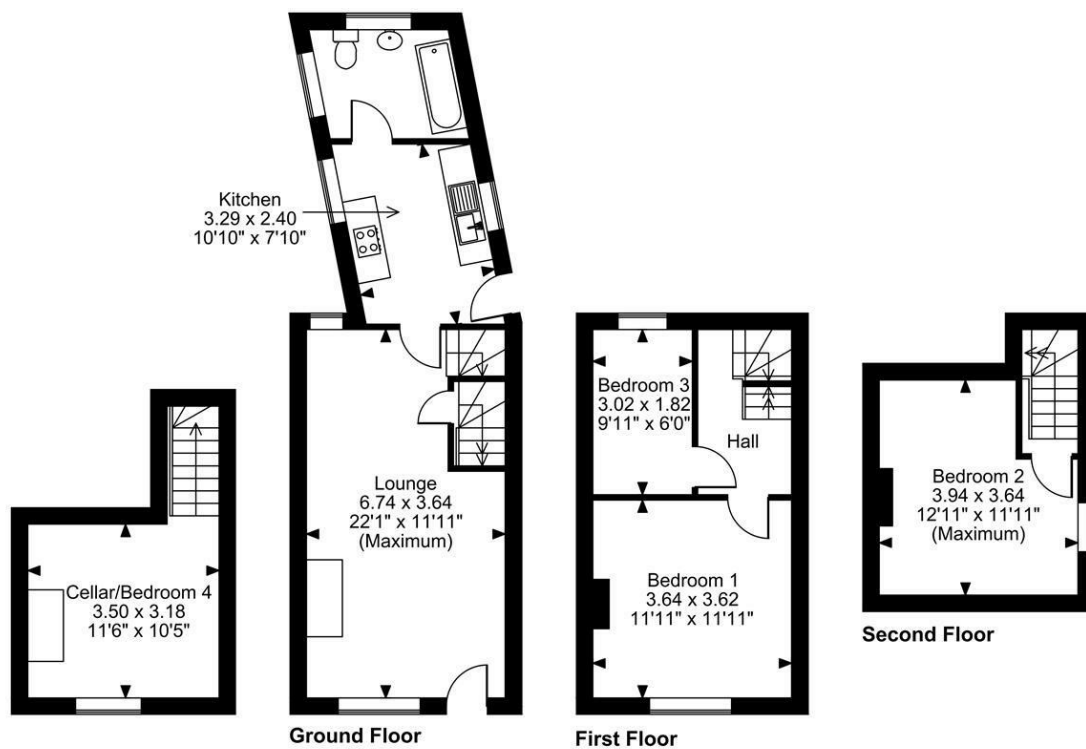
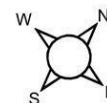
Bedroom 2 12'11" x 11'11" (3.94m x 3.64m)

BASEMENT

Bedroom 4/Cellar 11'5" x 10'5" (3.50m x 3.18m)



Loose Road, Maidstone, Kent
Approximate Gross Internal Area
973 Sq Ft/90 Sq M



FOR ILLUSTRATIVE PURPOSES ONLY - NOT TO SCALE

The position & size of doors, windows, appliances and other features are approximate only.
© ehouse. Unauthorised reproduction prohibited. Drawing ref. dig/8643633/TOW

