



Old Loose Close, Loose, Maidstone, Kent, ME15 0BJ
Price £650,000

EXTENDED DETACHED FAMILY HOME IN THE HEART OF THE LOOSE CONSERVATION AREA WITH SPACIOUS LOUNGE, DRESSING ROOM, EN-SUITE AND PRIVATE GARDEN.

This beautifully presented 3/4 bedroom detached home offers the perfect harmony of space, style, and comfort. Tucked away in the heart of the conservation area in Loose Valley which offers an abundance of nature, fabulous walks and babbling streams. Ofsted rated 'Outstanding' Loose Primary School is within walking distance, whilst Maidstone Town Centre is only a 4 mile distance for further shopping, social and education facilities. For the commuter, Staplehurst or Marden Station is only 10 minute drive away, with excellent services to London Bridge, Waterloo and Charing Cross.

Step into a welcoming porch that doubles as a handy study space and leads to a convenient downstairs WC. The kitchen features a delightful breakfast bar and flows effortlessly into the dining and living areas. A thoughtfully designed extension adds a sense of openness, with Velux windows inviting streams of natural light, creating a bright and airy atmosphere that's perfect for both relaxing and entertaining.

Upstairs, you'll find four well-proportioned bedrooms. One has been stylishly converted into a sophisticated dressing room, adding a touch of luxury to the main bedroom, which also benefits from its own en-suite. A modern family bathroom serves the remaining rooms with ease.

Outside, the generous rear garden is mainly laid to lawn—ideal for family activities or simply unwinding in peaceful surroundings.

To the front, a garage and private driveway offer ample parking, completing this superb family home in a prime location.

Viewing is highly recommended. Contact Page and Wells Loose Office today and book your viewing to avoid missing out.



GROUND FLOOR

Entrance Hall 8'10" x 7'6" (2.71m x 2.31m)

Lounge 24'10" x 23'0" (7.58m x 7.02m)

Dining Room 12'1" x 8'9" (3.69m x 2.68m)

Kitchen 14'8" x 10'10" (4.48m x 3.32m)

FIRST FLOOR

Landing

Bedroom 1 11'11" x 8'9" (3.64m x 2.68m)

En-Suite

Dressing Room/Bedroom 4 7'10" x 7'4" (2.41m x 2.24m)

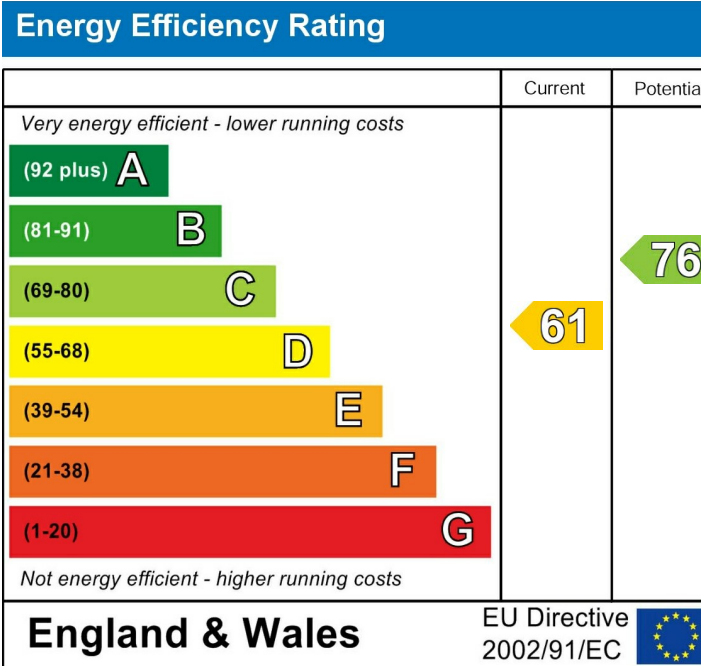
Bedroom 2 14'11" x 10'8" (4.57m x 3.27m)

Bedroom 3 15'8" x 7'11" (4.78m x 2.42m)

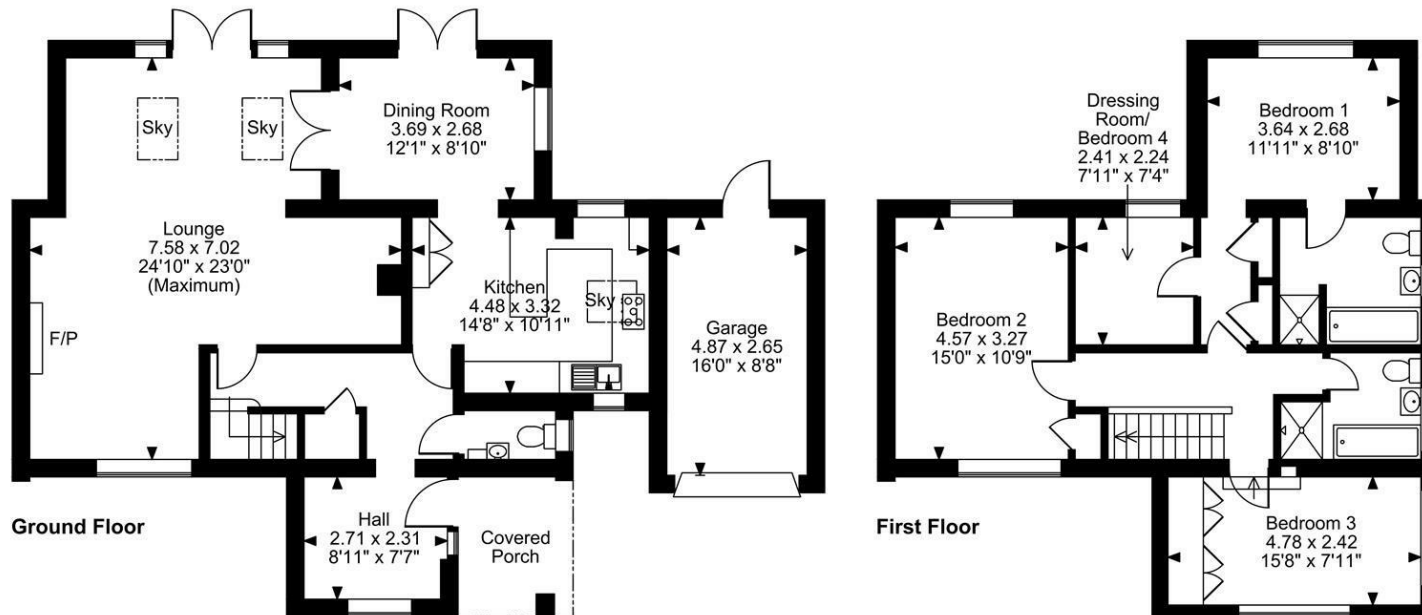
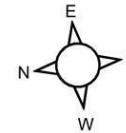
Family Bathroom

EXTERNALLY

Garage 15'11" x 8'8" (4.87m x 2.65m)



Old Loose Close, Loose, Maidstone, Kent
 Approximate Gross Internal Area
 Main House = 1652 Sq Ft/154 Sq M
 Garage = 139 Sq Ft/13 Sq M
 Total = 1791 Sq Ft/167 Sq M



FOR ILLUSTRATIVE PURPOSES ONLY - NOT TO SCALE

The position & size of doors, windows, appliances and other features are approximate only.
 © ehouse. Unauthorised reproduction prohibited. Drawing ref. dig/8642627/SS

