



**Harvest Mews, Coxheath, Maidstone, Kent, ME17 4UF**  
**Price £400,000**



**BEAUTIFUL THREE BEDROOM END OF TERRACE HOME IN A POPULAR VILLAGE LOCATION WITHIN WALKING DISTANCE OF LOCAL AMENITIES**

Situated in the popular village of Coxheath, the home is within walking distance of local amenities including Tesco Express, Londis, Local Bakers and Post Office. Coxheath Primary School and Cornwallis Academy are also walking distance from the home, and there are frequent buses services to Maidstone Town Centre from the village, offering a variety of shops, restaurants and social facilities. For the commuter, Staplehurst and Marden train stations are a short drive away offering frequent mainline services to London.

This beautifully maintained home offers an impressive array of desirable features. Upon entering, you're greeted by a bright and welcoming entrance hall with a convenient ground-floor cloakroom. The elegantly appointed kitchen is fully equipped with integrated appliances, including a dishwasher. The spacious lounge/diner is ideal for both relaxation and entertaining, complete with a practical under-stairs storage cupboard.

Upstairs, the main bedroom benefits from a stylish ensuite, while two additional well-proportioned bedrooms and a beautifully appointed family bathroom complete the living space.

Outside, the property benefits from two allocated parking spaces, along with ample visitor spaces nearby within the development. The low-maintenance garden is designed for enjoyment, mainly laid to lawn with an extended rear patio, perfect for outdoor seating.



## GROUND FLOOR

### Entrance Hall

Kitchen 11'1" x 9'11" (3.38m x 3.04m)

Lounge/Dining Room 17'8" x 16'9" (5.41m x 5.12m)

## FIRST FLOOR

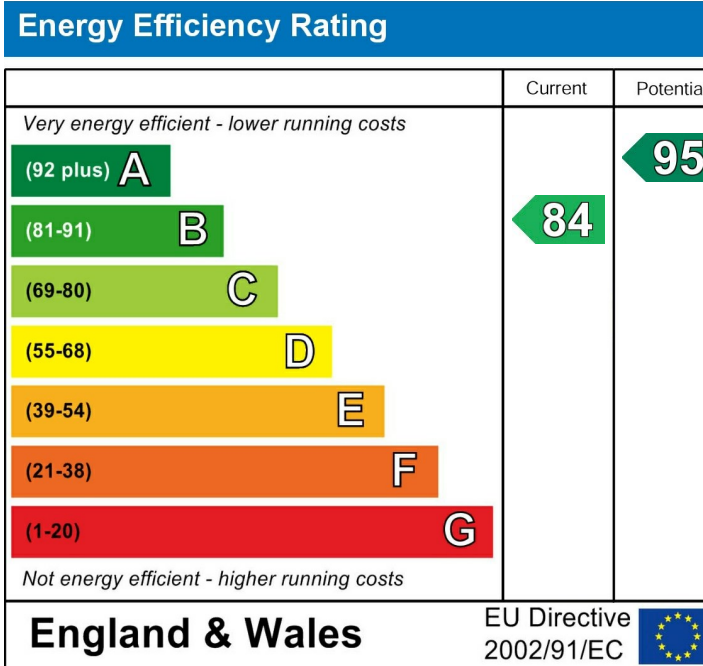
Bedroom 1 10'11" x 10'4" (3.35m x 3.16m)

### En-Suite

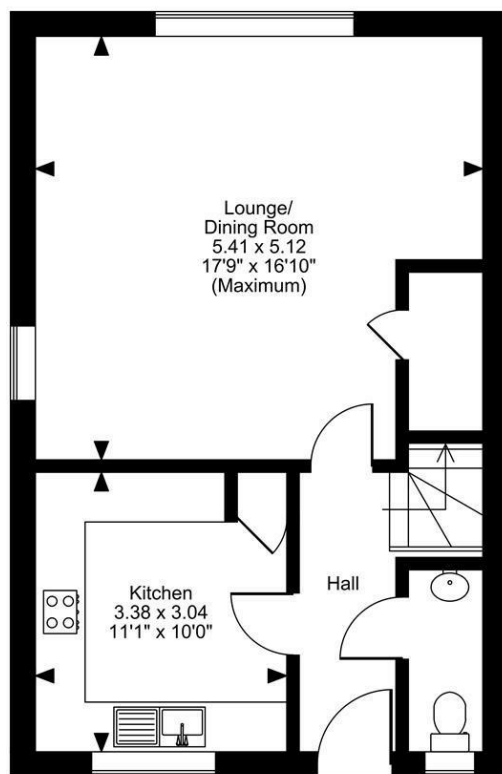
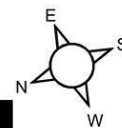
Bedroom 2 10'5" x 10'4" (3.20m x 3.15m)

Bedroom 3 10'5" x 7'1" (3.20m x 2.17m)

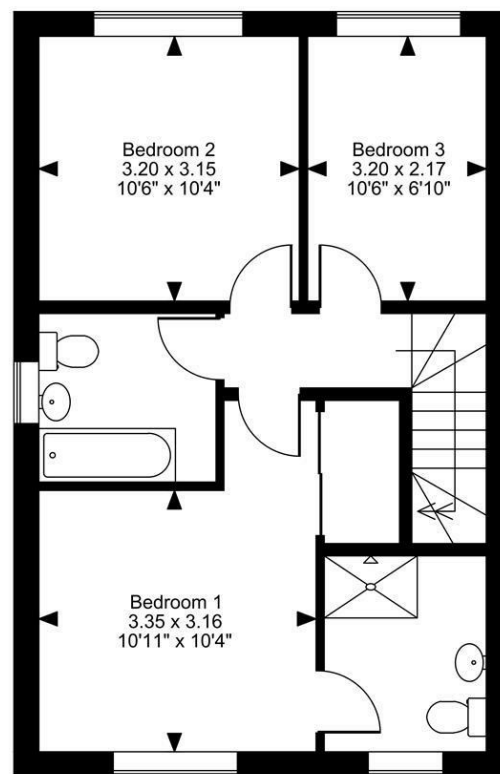
### Family Bathroom



**Harvest Mews, Coxheath, Maidstone, Kent**  
**Approximate Gross Internal Area**  
**996 Sq Ft/93 Sq M**



**Ground Floor**



**First Floor**

**FOR ILLUSTRATIVE PURPOSES ONLY - NOT TO SCALE**

The position & size of doors, windows, appliances and other features are approximate only.

© ehouse. Unauthorised reproduction prohibited. Drawing ref. dig/8641710/TOW

