



Shernolds, Maidstone, Kent, ME15 9QG
Offers In Excess Of £550,000

DEATCHED FOUR BEDROOM CHALET STYLE WITH SOUTH FACING GARDEN IN A DESIERABLE LOCATION

Situated in the sought-after village of Loose, this well-presented detached chalet-style home offers spacious and versatile accommodation. The property has been thoughtfully extended to provide a generous layout, with well-proportioned rooms throughout. Inside, the hallway leads to two double bedrooms on the ground floor, the principle bedroom with direct access to a family bathroom/wet room, and a large lounge and separate dining room, both of which feature French doors opening onto the garden. The fitted kitchen is in good order and provides ample storage and workspace.

The first floor comprises a landing, two further double bedrooms, one with en-suite shower room which would benefit from an upgrade plus access to eaves storage.

Externally, the property benefits from a driveway to the front, extending to the side, offering ample off-road parking. The garage, currently utilised as a workshop space, has the potential to be reinstated as a functional garage if required. The south-facing rear garden is a particular feature, with a raised decked area patio, well-maintained lawns, and established borders.

The home is positioned within the village of Loose, known for its picturesque setting, strong sense of community, and proximity to well-regarded schools, local amenities, and transport links. The area is well-served by countryside walks and the Loose Valley Conservation Area, making it an ideal location for those seeking a balance between village living and accessibility to Maidstone town centre.

Viewing is highly recommended. Call Page and Wells Loose Office today and book your viewing to avoid missing out.



GROUND FLOOR

Entrance Hall

Lounge

Dining Room 13'6" x 11'5" (4.12m x 3.50m)

Kitchen 15'2" x 10'7" (4.64m x 3.24m)

Bedroom 3 16'2" x 8'5" (4.95m x 2.58m)

Bedroom 4 14'2" x 9'10" (4.34m x 3.00m)

Bathroom

FIRST FLOOR

Bedroom 1 13'3" x 12'5" (4.05m x 3.80m)

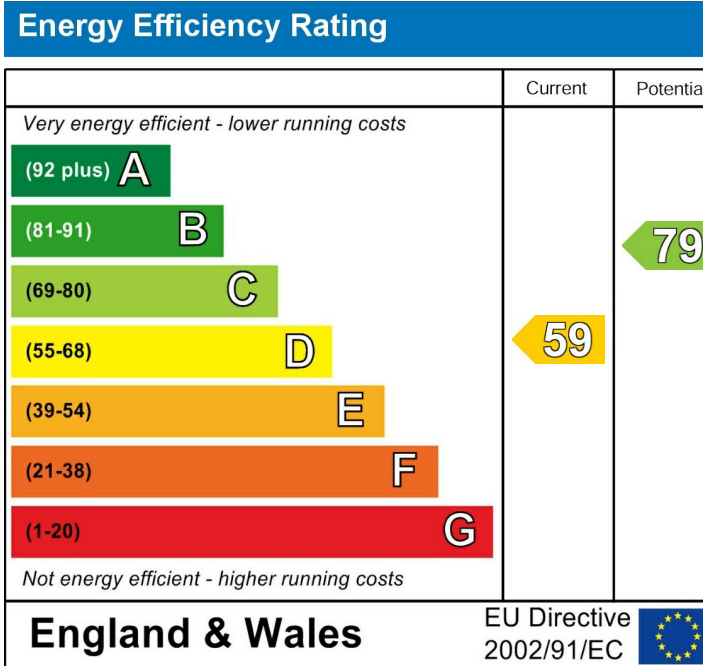
En-Suite

Bedroom 2 13'3" x 10'0" (4.06m x 3.06m)

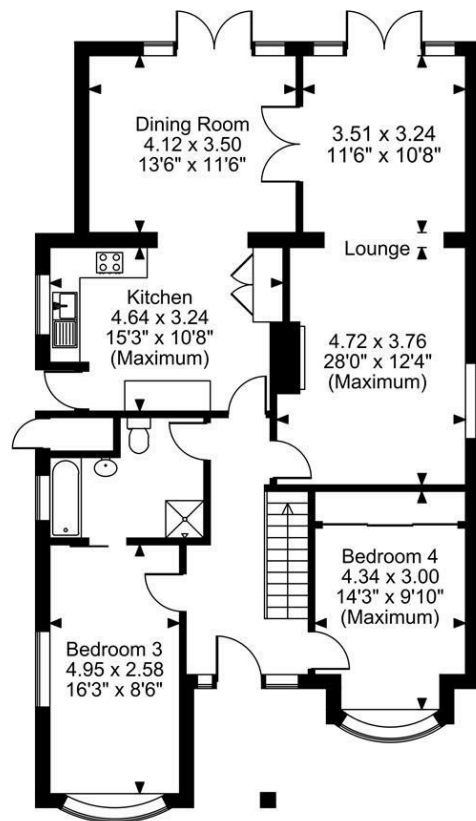
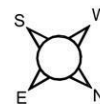
EXTERNALLY

Office/Studio 17'1" x 8'11" (5.23m x 2.74m)

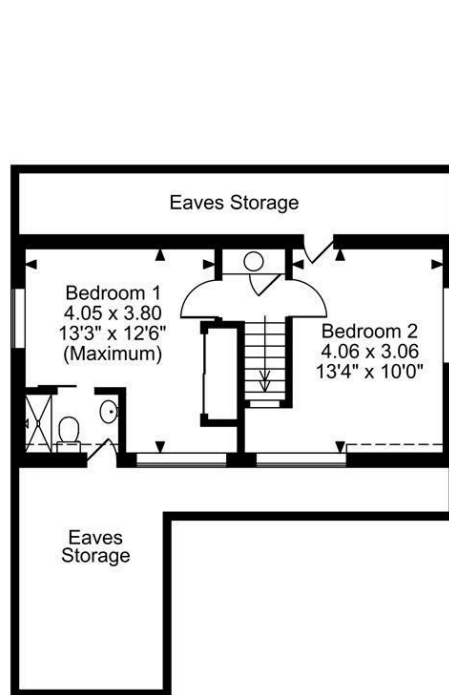
Shed 9'0" x 4'3" (2.75m x 1.30m)



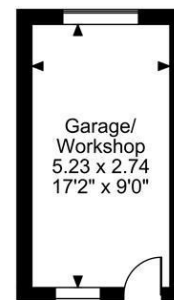
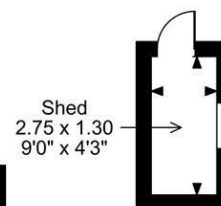
Shernolds, Maidstone, Kent
Approximate Gross Internal Area
Main House = 1487 Sq Ft/138 Sq M
Outbuildings = 192 Sq Ft/18 Sq M
Total = 1679 Sq Ft/156 Sq M



Ground Floor



First Floor



FOR ILLUSTRATIVE PURPOSES ONLY - NOT TO SCALE

The position & size of doors, windows, appliances and other features are approximate only.

□ □ □ Denotes restricted head height

© ehouse. Unauthorised reproduction prohibited. Drawing ref. dig/8640279/LCO

