



Church Street, Loose, Maidstone, Kent, ME15 0BU
Guide Price £325,000

GUIDE PRICE £325,000 TO £350,000NO FORWARD CHAIN***IMMACUALTE THREE BEDROOM COTTAGE IN THE HEART OF THE LOOSE CONSERVATION AREA WITH FEATURE LOG BURNER, COTTAGE GARDEN AND A PRIVATE SAUNA
Nestled in the picturesque Loose Valley Conservation Area, this beautifully restored three-bedroom character home offers a rare opportunity to embrace nature while enjoying the convenience of nearby amenities. With no onward chain, this home is ready for its next owner to move straight in and enjoy its charm and comfort. Surrounded by stunning countryside, residents can explore scenic walks, enjoy the vibrant local wildlife, and visit the well-regarded village pub just a short stroll away. There is an excellent primary school within walking distance, while Maidstone, with its range of shops, restaurants, and entertainment, is just four miles away.

The property has been sympathetically restored to a high standard and offers versatile accommodation across three floors. Inside, there is a welcoming entrance hall. On the lower ground floor, there is a bedroom and a useful W/C. The ground floor features a beautifully designed kitchen, complete with integrated appliances, including a dishwasher and fridge freezer, which then leads into a cosy living room. The living room is enhanced by a feature fireplace with a log burner, creating a warm and inviting atmosphere. On the first floor, there are two well-proportioned bedrooms and a modern shower room.

To the rear, the charming cottage garden is a true highlight, featuring manicured lawns, a delightful brick pathway, and beautifully stocked borders. Additional benefits include a shed for storage and even a private sauna for ultimate relaxation.

A rare find in an idyllic village setting, this home perfectly blends period character with modern comfort. Contact us today to arrange your viewing!



GROUND FLOOR

Lounge/Kitchen 20'9" x 10'8" (6.35m x 3.26m)

LOWER GROUND FLOOR

Bedroom 1 13'1" x 9'9" (4.01m x 2.99m)

FIRST FLOOR

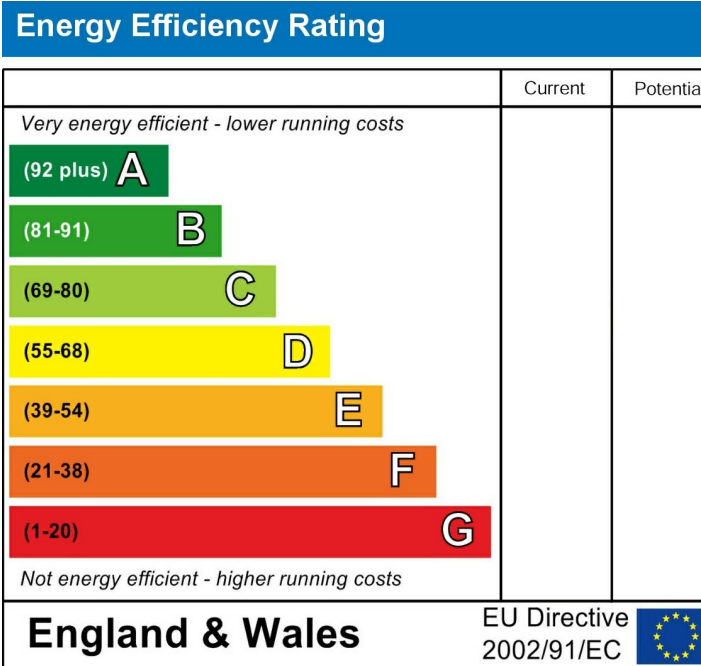
Bedroom 2 11'1" x 10'11" (3.39m x 3.34m)

Bedroom 3 9'4" x 5'11" (2.85m x 1.82m)

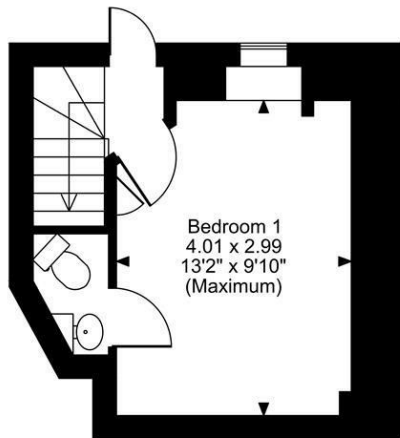
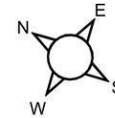
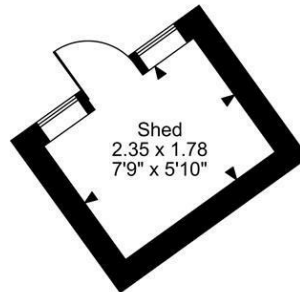
Bathroom

EXTERNALLY

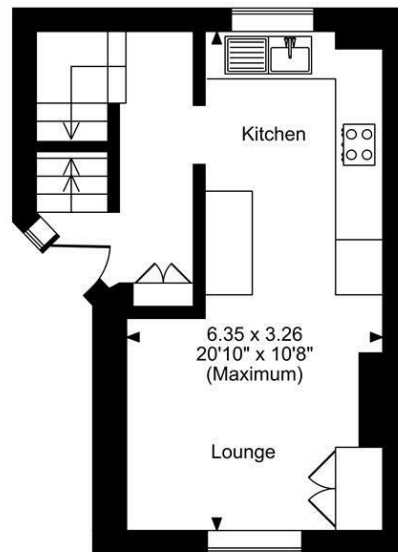
Shed 7'8" x 5'10" (2.35m x 1.78m)



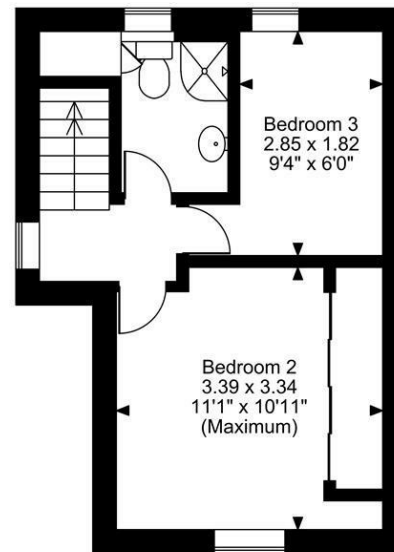
Cape Cottages, Church Street, Loose, Maidstone, Kent
Approximate Gross Internal Area
Main House = 683 Sq Ft/63 Sq M
Shed = 45 Sq Ft/4 Sq M
Total = 728 Sq Ft/67 Sq M



Lower Ground Floor



Ground Floor



First Floor

FOR ILLUSTRATIVE PURPOSES ONLY - NOT TO SCALE

The position & size of doors, windows, appliances and other features are approximate only.

© ehouse. Unauthorised reproduction prohibited. Drawing ref. dig/8639047/LCO

