



**Marion Crescent, Maidstone, Kent, ME15 7EH**  
**Price £650,000**



**BEAUTIFULLY PRESENTED FOUR-BEDROOM DETACHED CHALET BUNGALOW WITH A STUNNING PRIVATE REAR GARDEN AND VERSATILE LIVING SPACE**

This exceptional family home offers generous living space with adaptable accommodation on the ground floor. Entering through the practical entrance porch, you are welcomed into a spacious hallway leading to two well-proportioned bedrooms alongside a sizable shower room. At the end of the hallway, the open living/breakfast room serves as the heart of the home, perfect for family gatherings. Adjacent there is a kitchen with ample work space and an adjoining utility room. Additionally there is also a dedicated conservatory or dining room for hosting formal family meals. One of the standout features of this property is its abundance of space, ensuring a comfortable and practical living environment for all.

Upstairs, the property features a spacious main bedroom with an en-suite bathroom, accompanied by another well-sized double bedroom and a modern luxury family bathroom.

Externally, the home benefits from a generous driveway accommodating multiple vehicles, along with a large, secure gated side area that offers additional parking or flexible use. This space also has approved planning permission for an extension if desired.

The stunning private rear garden is beautifully landscaped, featuring a level lawn illuminated by bollard lighting and ambient LED uplighting. A raised decked area hosts a stylish log cabin, currently utilized as a bar/workspace complete with air conditioning. Adjacent to this is a decked gazebo, complete with a contemporary six-person hot tub—perfect for relaxation and entertaining.

This versatile and spacious home is ideal for families seeking a blend of comfort, style, and practicality.

Viewing of this fine family home is highly recommended and is available by appointment only. Contact Page and Wells on 01622 746273



## GROUND FLOOR

Entrance Hall 12'5" x 6'10" (3.80m x 2.10m)

Lounge/Breakfast Room 28'10" x 13'11" (8.80m x 4.25m)

Kitchen 12'9" x 9'4" (3.90m x 2.85m)

Utility Room

Conservatory/Dining Room 18'6" x 9'8" (5.65m x 2.95m)

Bedroom 2 14'7" x 11'7" (4.45m x 3.55m)

Bedroom 3 12'11" x 9'4" (3.95m x 2.85m)

Bathroom

## FIRST FLOOR

Bedroom 1 20'11" x 16'8" (6.40m x 5.10m)

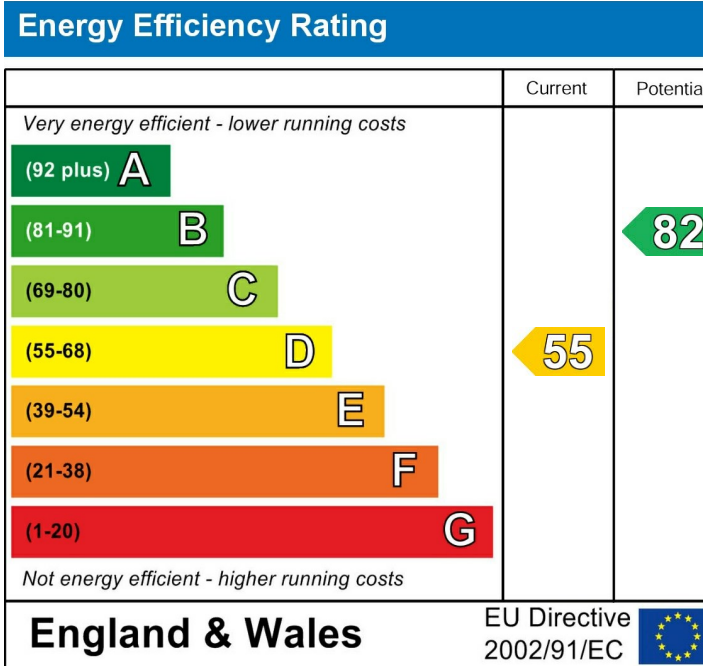
En-Suite

Bedroom 4 11'7" x 11'7" (3.55m x 3.55m)

Family Bathroom

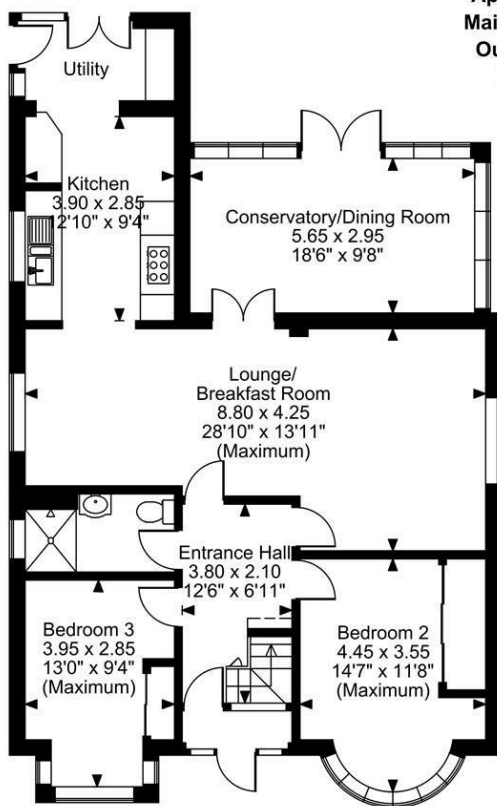
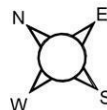
## EXTERNALLY

Bar 22'2" x 9'1" (6.77m x 2.78m)

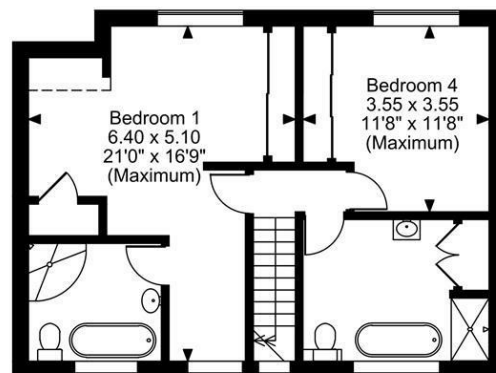




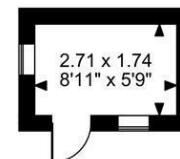
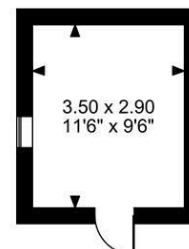
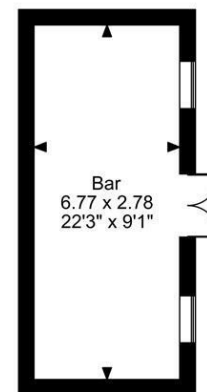
Marion Crescent, Maidstone, Kent  
 Approximate Gross Internal Area  
 Main House = 1736 Sq Ft/161 Sq M  
 Outbuilding = 363 Sq Ft/34 Sq M  
 Total = 2099 Sq Ft/195 Sq M



Ground Floor



First Floor



**FOR ILLUSTRATIVE PURPOSES ONLY - NOT TO SCALE**

The position & size of doors, windows, appliances and other features are approximate only.

□ □ □ Denotes restricted head height

© ehouse. Unauthorised reproduction prohibited. Drawing ref. dig/8637447/LCO

