



Lasius Drive, Coxheath, Maidstone, Kent, ME17 4UH
Price £450,000



IMMACULATE FOUR BEDROOM SEMI DETACHED HOME IN A POPULAR VILLAGE LOCATION WITHIN WALKING DISTANCE OF LOCAL AMENITIES

Situated in the popular village of Coxheath, the home is within walking distance of local amenities including Tesco Express, Londis, Local Bakers and Post Office. Coxheath Primary School and Cornwallis Academy are also walking distance from the home, and there are frequent buses services to Maidstone Town Centre from the village, offering a variety of shops, restaurants and social facilities. For the commuter, Staplehurst and Marden train stations are a short drive away offering frequent mainline services to London.

This fabulous home has been meticulously maintained and offers a wealth of desirable features. On the ground floor there is a welcoming entrance hall, beautiful fitted kitchen with integrated appliances including a dishwasher. The spacious lounge/diner offers a perfect setting for relaxation, complemented by a convenient ground floor cloakroom. On the first floor, the main bedroom is complete with built-in wardrobes and an ensuite. Three additional bedrooms and a well appointed family bathroom complete the internal accommodation.

Externally, the driveway provides ample off road parking for several cars and an electric charging point leading to a detached garage with a pitched roof – ideal for loft storage. The low-maintenance garden, featuring artificial grass. Patio to rear and a section of decking provide an ideal seating area.

This residence seamlessly combines comfort, style, and practicality, making it an ideal choice for those seeking a modern and well-appointed home. Do not delay and contact Page and Wells Loose Office and book your viewing to avoid missing out.



GROUND FLOOR

Entrance Hall

Lounge/Diner 17'6" x 17'4" (5.34m x 5.29m)

Kitchen 11'10" x 9'8" (3.63m x 2.97m)

W/C

FIRST FLOOR

Bedroom 1 10'6" x 9'1" (3.22m x 2.79m)

En-Suite

Bedroom 2 10'6" x 8'3" (3.22m x 2.53m)

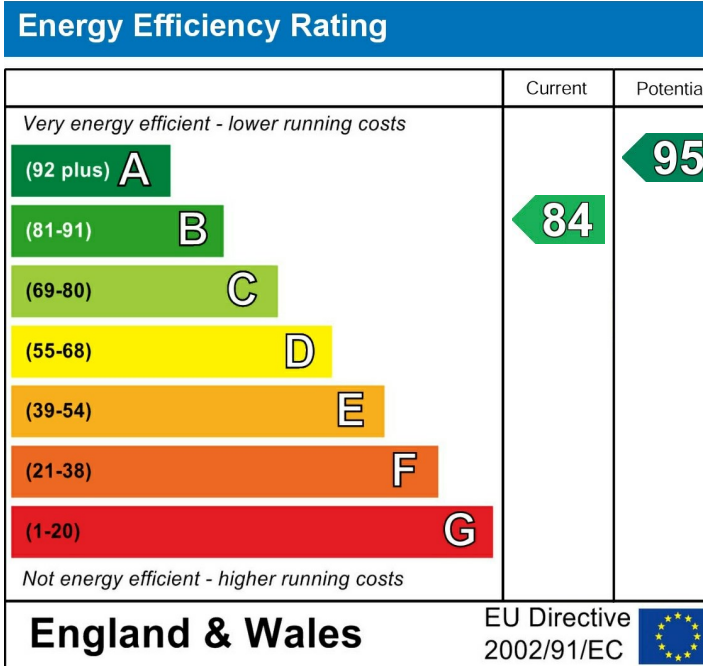
Bedroom 3 9'8" x 6'5" (2.95m x 1.97m)

Bedroom 4 8'3" x 6'5" (2.53m x 1.97m)

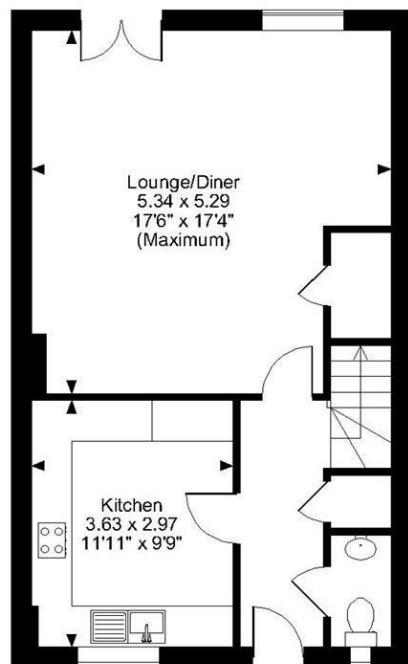
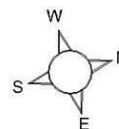
Family Bathroom

EXTERNALLY

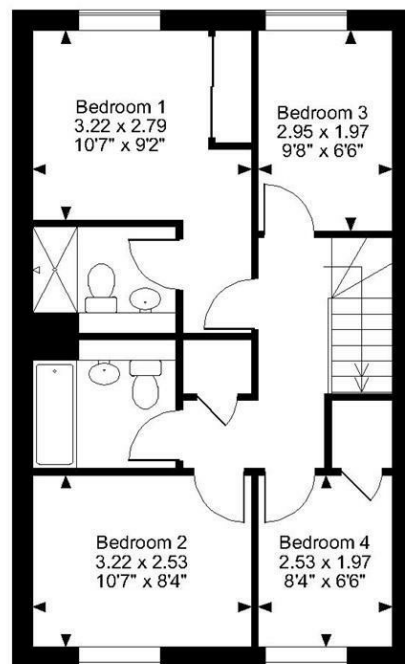
Garage 17'9" x 11'10" (5.42m x 3.61m)



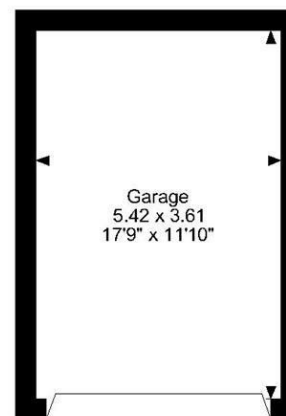
Lasius Drive, Coxheath, Maidstone
Approximate Gross Internal Area
Main House = 1022 Sq Ft/95 Sq M
Garage = 211 Sq Ft/20 Sq M
Total = 1233 Sq Ft/115 Sq M



Ground Floor



First Floor



FOR ILLUSTRATIVE PURPOSES ONLY - NOT TO SCALE

The position & size of doors, windows, appliances and other features are approximate only.
 © ehous. Unauthorised reproduction prohibited. Drawing ref. dig/8583444/LCO

