



Heath Road, Linton, Maidstone, ME17 4NT
Price £250,000



NO FORWARD CHAIN – CHARMING TWO-BEDROOM COTTAGE WITH A LARGE GARDEN AND FRONT PARKING

This delightful cottage is an excellent opportunity for first-time buyers or investors. The property features a cozy living room with a charming feature fireplace, a well-appointed kitchen, and a ground-floor bathroom. Upstairs, there are two spacious double bedrooms, with fitted wardrobes in the main bedroom. Additionally, there is a recently installed Worcester Bosch boiler and a useful cellar offers ample storage or the potential to be converted into an extra reception room.

Externally, the property benefits from off-road parking at the front, while the generous rear garden backs onto open fields, providing a peaceful and scenic setting.

Located in the desirable village of Linton within walking distance of local amenities, including Tesco Express, Spice Lounge restaurant, and a convenient Post Office. For commuters, Marden and Staplehurst stations are easily accessible, offering frequent high-speed rail services to London in under an hour.

Early viewing is highly recommended—contact Page & Wells Loose Office today to arrange your appointment.



GROUND FLOOR

Lounge 11'5" x 11'4" (3.49m x 3.47m)

Kitchen 11'5" x 9'6" (3.49m x 2.91m)

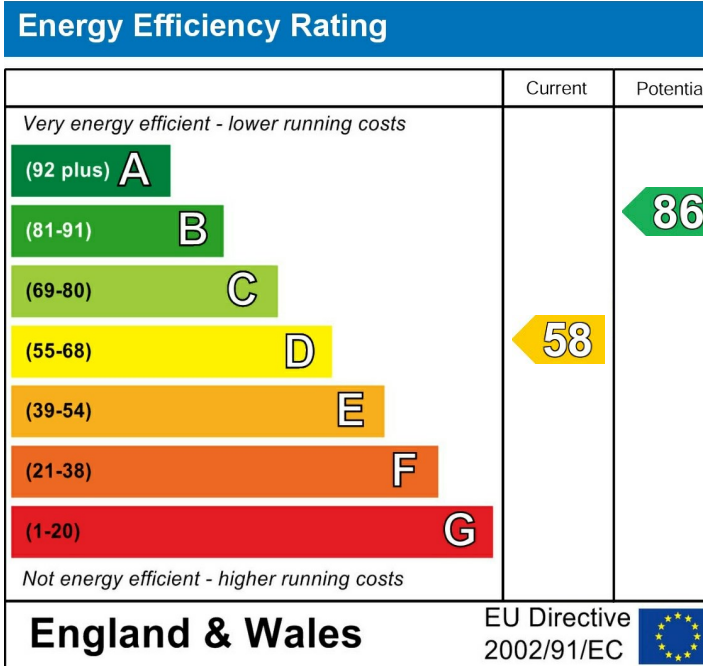
Bathroom

FIRST FLOOR

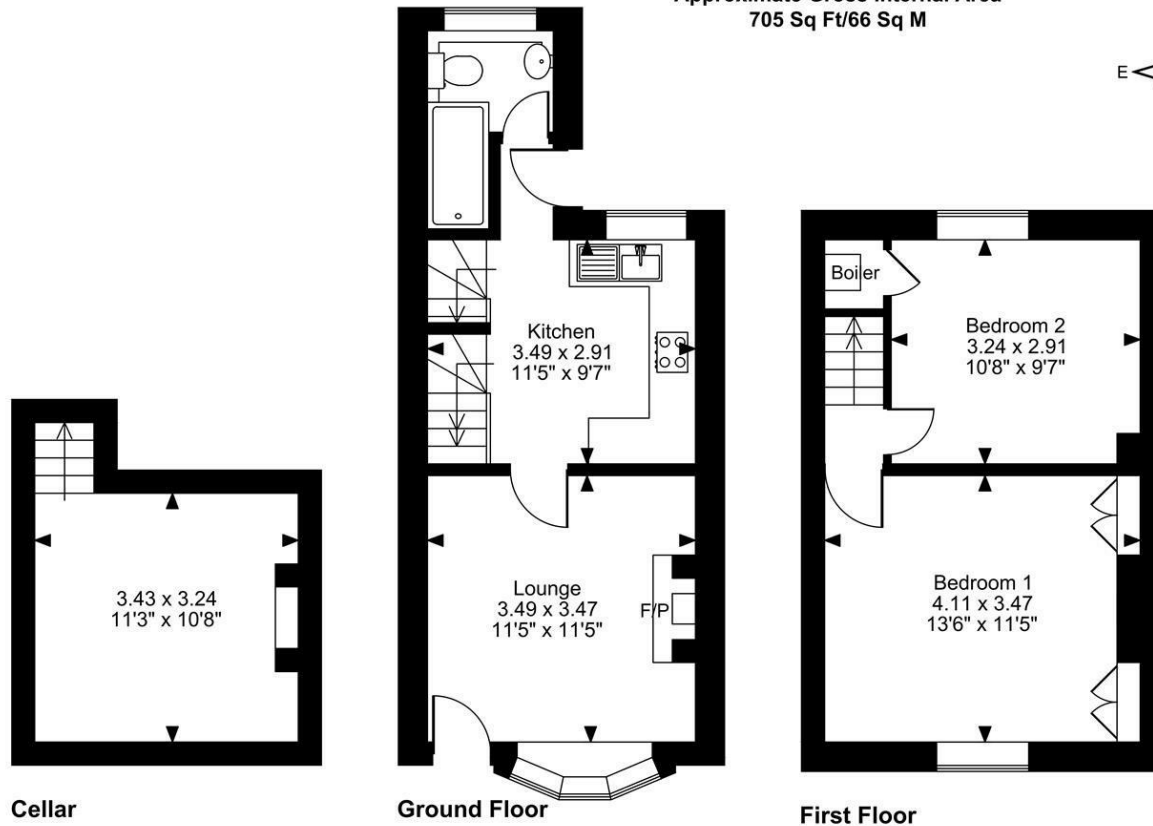
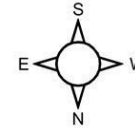
Bedroom 1 13'5" x 11'4" (4.11m x 3.47m)

Bedroom 2 10'7" x 9'6" (3.24m x 2.91m)

Cellar 11'3" x 11'4" (3.43m x 3.47m)



Alchins Cottages, Heath Road, Linton, Maidstone
Approximate Gross Internal Area
705 Sq Ft/66 Sq M



FOR ILLUSTRATIVE PURPOSES ONLY - NOT TO SCALE

The position & size of doors, windows, appliances and other features are approximate only.

© ehouse. Unauthorised reproduction prohibited. Drawing ref. dig/8635483/SS

