



**Hartridge Farm Mobilehome Park, Lower Road, East Farleigh, ME15 0JR**  
**Price £194,000**

**\*\*1/2 BEDROOM PARK HOME IN A PRIME LOCATION IN THE MOST SOUGHT AFTER VILLAGE OF EAST FARLEIGH\*\*** Situated on the well established Hartridge Farm site on the banks of the River Medway this Park Home is offering full residential ownership. The accommodation comprises; a spacious lounge, dining area, modern kitchen and shower room. This was originally a 2 bedroom property however the current owners have opened up this space to create one double bedroom with a large dressing area. Outside, there are gardens and a decked seating area. We understand the site includes exclusive river access and fishing rights along the river and also communal parking bays for residents around the site and visitors at the top of the site. No children or pets are permitted to be in residence. The Park is situated on the River Medway, and close to the historic village of East Farleigh. There are surrounding orchards and farm land ideal for walking or walk over Farleigh Bridge and follow the tow path to Maidstone. Maidstone has great amenities, shops and restaurants plus rail and motorway links. Viewing is highly recommended. Call Page and Well Loose Office today and book your viewing to avoid missing out.



**Porch/Utility**

**Lounge/Kitchen/Dining Area 19'1" x 17'7" (5.82m x 5.37m)**

**Bedroom 19'0" x 9'10" (5.81m x 3.02m)**

**Dressing Room**

**Bathroom**

**EXTERNALLY**

**Storage 7'7" x 5'6" (2.33m x 1.69m)**

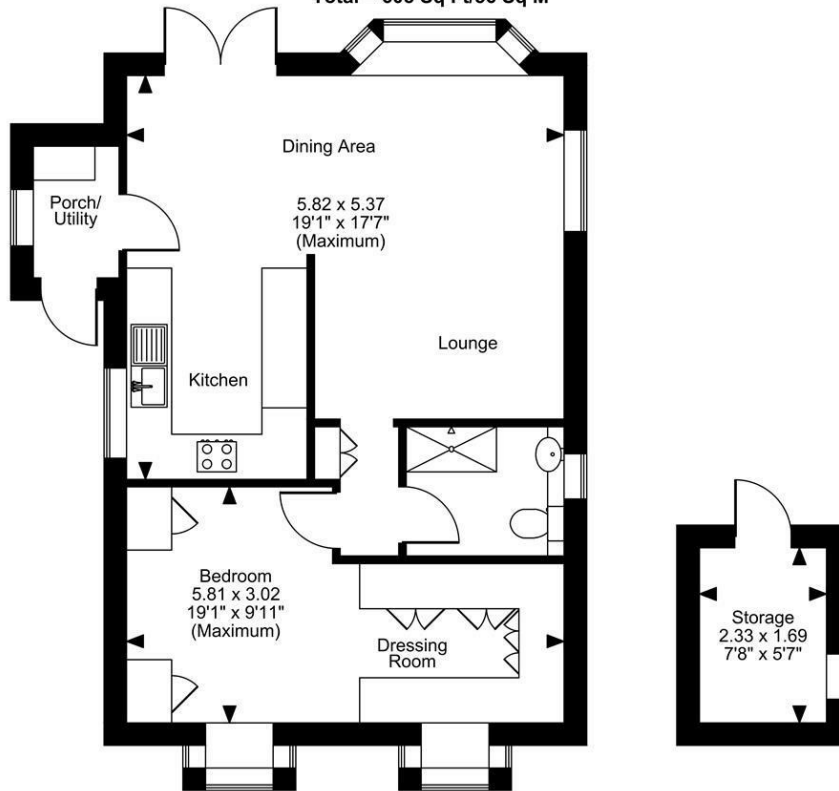
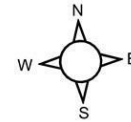
**Hartridge Farm Mobilehome Park, Lower Road, East Farleigh, Maidstone, Kent**

**Approximate Gross Internal Area**

**Main House = 563 Sq Ft/52 Sq M**

**Storage = 42 Sq Ft/4 Sq M**

**Total = 605 Sq Ft/56 Sq M**



**Ground Floor**

**FOR ILLUSTRATIVE PURPOSES ONLY - NOT TO SCALE**

The position & size of doors, windows, appliances and other features are approximate only.

© ehouse. Unauthorised reproduction prohibited. Drawing ref. dig/8632943/LCO

