



Cornwallis Avenue, Linton, Maidstone, ME17 4BW
Price £375,000

THREE BEDROOM HOME WITH GREAT POTENTIAL IN A SOUGHT AFTER CUL DE SAC WITH STUNNING VIEWS OVER THE SURROUNDING ORCHARDS

We are thrilled to present this charming three-bedroom semi-detached home, located in the picturesque village of Linton. Enjoying stunning countryside views to both the front and rear, this bright and airy property offers off-street parking for two vehicles, with potential for additional spaces.

Linton village is conveniently situated just 6 miles from the M20 motorway, providing easy access to London and the Kent coast. Maidstone town centre is only 4 miles away, and the nearby countryside offers scenic walks right on your doorstep. East Farleigh station is also just 4 miles away, making this an ideal location for commuters and nature lovers alike.

This chain-free property features a spacious lounge, kitchen, and bathroom on the ground floor, while the first floor offers three bedrooms and a separate toilet. With its blank canvas appeal, the home provides the perfect opportunity for new owners to reimagine the space, reconfigure the layout, or even extend and enhance the property, subject to obtaining the necessary permissions.

The rear garden enjoys a peaceful backdrop of open farmland, while the front offers additional parking and delightful views of the surrounding countryside. This property is brimming with potential and awaits your personal touch!



GROUND FLOOR

Entrance Hall 10'9" x 5'8" (3.28m x 1.75m)

Lounge 20'5" x 11'4" (6.24m x 3.47m)

Kitchen 9'4" x 9'4" (2.87m x 2.86m)

Bathroom

FIRST FLOOR

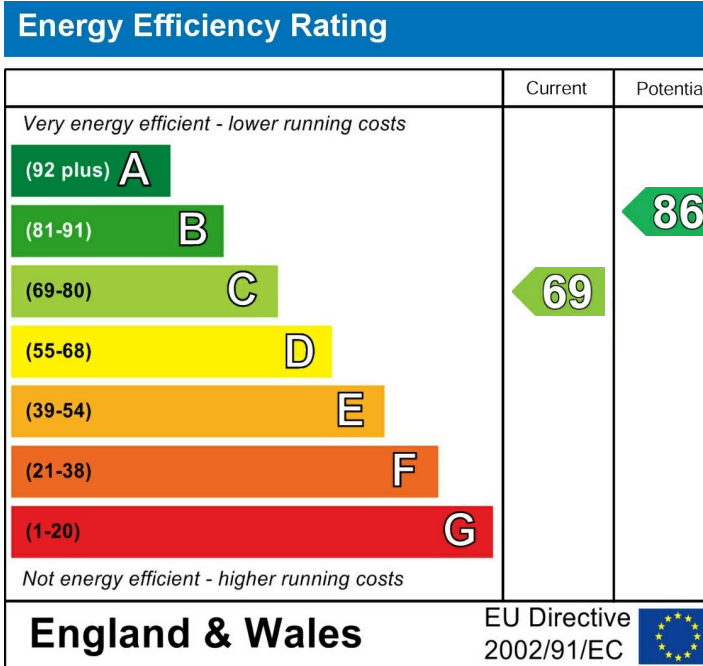
Bedroom 1 14'6" x 10'11" (4.43m x 3.34m)

Bedroom 2 14'6" x 10'1" (4.43m x 3.08m)

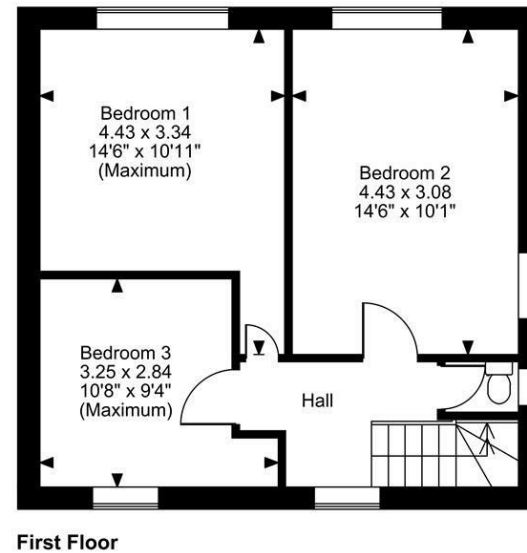
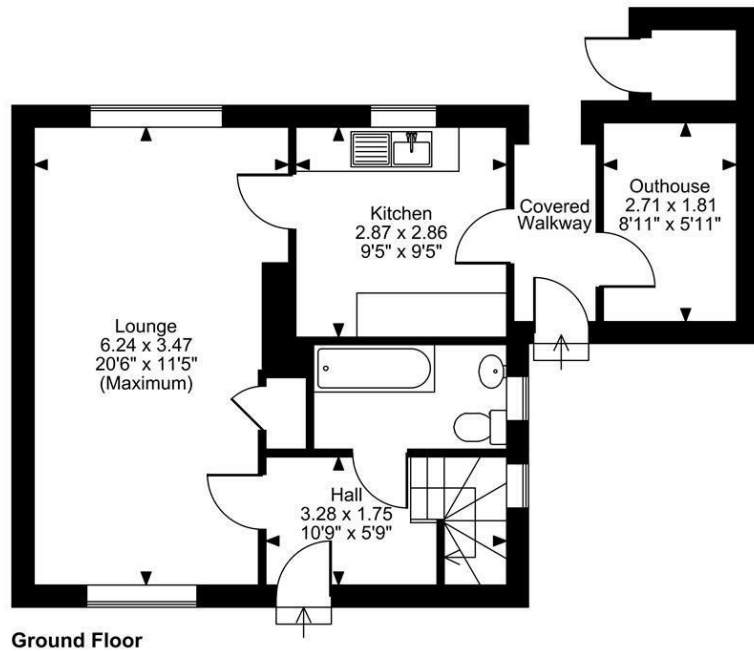
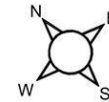
Bedroom 3 10'7" x 9'3" (3.25m x 2.84m)

EXTERNALLY

Outhouse 8'10" x 5'11" (2.71m x 1.81m)



Cornwallis Avenue, Linton, Maidstone, Kent
Approximate Gross Internal Area
976 Sq Ft/91 Sq M
 Quoted Area Excludes 'Covered Walkway'



FOR ILLUSTRATIVE PURPOSES ONLY - NOT TO SCALE

The position & size of doors, windows, appliances and other features are approximate only.
 © ehouse. Unauthorised reproduction prohibited. Drawing ref. dig/8632739/TOW

