



Penfold Gardens, Boughton Monchelsea, ME17 4GB
Offers In Excess Of £400,000

SUPERB FOUR BEDROOM FAMILY HOME IN EXCELLENT ORDER WITH OPEN PLAN KITCHEN/DINER IN A SOUGHT AFTER RESIDENTIAL DEVELOPMENT

This most attractive style of four bedroom home is situated on the south side of Maidstone in the parish of Boughton Monchelsea, located on the fringe of open countryside. Maidstone, the County Town of Kent, is some 4 miles distance offering a wide range of shopping, educational and social facilities. For the commuter, both Maidstone and nearby villages of Staplehurst, Marden and Headcorn offer frequent high speed services to London.

This beautifully updated home offers spacious and versatile living across two floors, making it perfect for modern family life.

Inside, there is a welcoming hallway leads to an impressive open-plan kitchen/diner. Featuring high-quality fittings, space for a Rangemaster cooker, and a wine cooler, this space is ideal for entertaining. A separate lounge runs the full length of the property, complete with a fitted media unit and French doors that open onto the garden. A practical utility room and a convenient ground-floor cloakroom complete the downstairs accommodation.

Upstairs, the home offers four generously sized bedrooms. The main bedroom enjoys a stunning ensuite with elegant marble tiles. The remaining bedrooms are served by a luxurious family bathroom, also finished with marble tiles, featuring a double shower, his-and-her sinks, and a charming roll-top bath.

Externally, the property benefits from a carport for parking and a beautifully maintained, enclosed rear garden.

This stunning family home is a must-see. Contact Page and Wells Loose Office today to arrange your viewing!



GROUND FLOOR

Sitting Room 19'9" x 10'11" (6.03 x 3.35)

Ground Floor Cloakroom

Kitchen Diner 25'6" x 19'9" (7.79 x 6.03)

Hallway

Utility Room 7'1" x 4'11" (2.18 x 1.51)

FIRST FLOOR

Bedroom 1 11'10" x 11'2" (3.61 x 3.41)

Bedroom 2 12'9" x 11'6" (3.89 x 3.53)

Bedroom 3 14'7" x 9'10" (4.45 x 3.00)

Bedroom 4 10'2" x 7'8" (3.12 x 2.35)

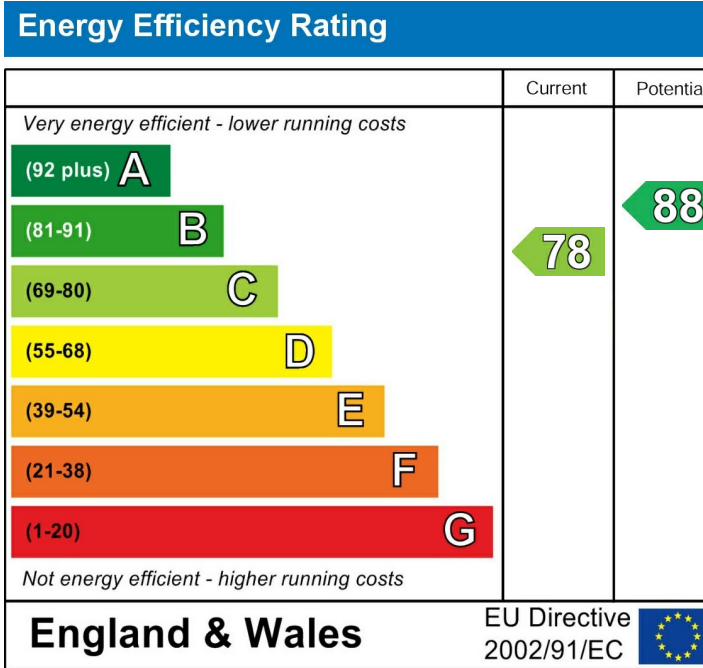
Ensuite

Family Bathroom

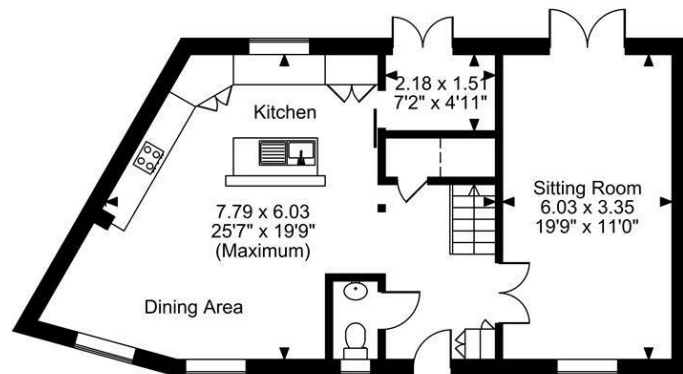
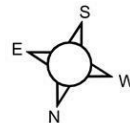
EXTERNALLY

Car Port 19'3" x 8'6" (5.88 x 2.61)

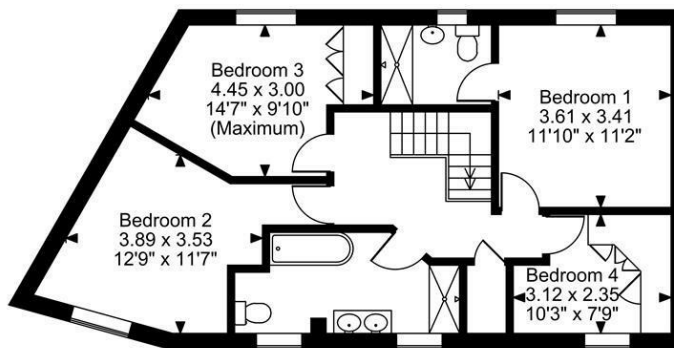
Garden to Rear



Penfold Gardens, Boughton Monchelsea, Maidstone
Approximate Gross Internal Area
Main House = 1446 Sq Ft/134 Sq M
Carport = 174 Sq Ft/16 Sq M
Total = 1620 Sq Ft/150 Sq M



Ground Floor



First Floor

FOR ILLUSTRATIVE PURPOSES ONLY - NOT TO SCALE

The position & size of doors, windows, appliances and other features are approximate only.

□□□□ Denotes restricted head height

© ehouse. Unauthorised reproduction prohibited. Drawing ref. dig/8630018/LCO

